

Jewett Rd S. of US 202/NH 9

Vehicle Class	Mon 7/14/2025	Tue 7/15/2025	Wed 7/16/2025	Thur 7/17/2025	Fri 7/18/2025	Full Day Avg (Tue-Thur)
1	21	39	52	30	5	40
<i>Motorcycles</i>	1.4%	1.8%	2.4%	1.5%	1.1%	1.9%
2	1,072	1,562	1,515	1,356	275	1,478
<i>Passenger Cars</i>	72.5%	70.3%	70.7%	69.2%	62.8%	70.1%
3	320	529	487	480	123	499
<i>Pickups/Vans</i>	21.7%	23.8%	22.7%	24.5%	28.1%	23.7%
4	0	0	4	1	1	2
<i>Buses</i>	0.0%	0.0%	0.2%	0.1%	0.2%	0.1%
5	41	58	53	40	16	50
<i>Single-Unit, 2-Axel</i>	2.8%	2.6%	2.5%	2.0%	3.7%	2.4%
6	4	12	7	22	10	14
<i>Single-Unit, 3-Axel</i>	0.3%	0.5%	0.3%	1.1%	2.3%	0.6%
7	1	3	1	1	0	2
<i>Single-Unit, 4+ Axel</i>	0.1%	0.1%	0.0%	0.1%	0.0%	0.1%
8	7	7	9	12	1	9
<i>Single Trailer, 3/4 Axel</i>	0.5%	0.3%	0.4%	0.6%	0.2%	0.4%
9	12	12	13	16	7	14
<i>Single Trailer, 5-Axel</i>	0.8%	0.5%	0.6%	0.8%	1.6%	0.6%
10	0	0	1	1	0	1
<i>Single Trailer, 6+ Axel</i>	0.0%	0.0%	0.0%	0.1%	0.0%	0.0%
11	0	0	0	1	0	0
<i>Multi-Trailer, 5 or less Axel</i>	0.0%	0.0%	0.0%	0.1%	0.0%	0.0%
12	0	0	0	0	0	0
<i>Multi-Trailer, 6-Axel</i>	0.0%	0.0%	0.0%	0.0%	0.0%	0.0%
13	0	0	0	0	0	0
<i>Multi-Trailer, 7+ Axel</i>	0.0%	0.0%	0.0%	0.0%	0.0%	0.0%
Day Total	1,478	2,222	2,142	1,960	438	2,108

Jewett Rd S. of US 202/NH 9

Speed (mph)	Mon 7/14/2025	Tue 7/15/2025	Wed 7/16/2025	Thur 7/17/2025	Fri 7/18/2025	Full Day Avg (Tue-Thur)
0-25	15 1.0%	21 0.9%	18 0.8%	21 1.1%	4 0.9%	20 0.9%
26-30	31 2.1%	43 1.9%	31 1.4%	52 2.7%	8 1.8%	42 2.0%
31-35	489 33.1%	753 33.9%	716 33.4%	636 32.4%	143 32.6%	702 33.3%
36-40	736 49.8%	1,136 51.1%	1,108 51.7%	1,017 51.9%	223 50.9%	1,087 51.6%
41-45	179 12.1%	249 11.2%	242 11.3%	205 10.5%	55 12.6%	232 11.0%
46-50	22 1.5%	16 0.7%	23 1.1%	22 1.1%	4 0.9%	20 1.0%
51-55	4 0.3%	4 0.2%	2 0.1%	5 0.3%	1 0.2%	4 0.2%
56-60	1 0.1%	0 0.0%	1 0.0%	2 0.1%	0 0.0%	1 0.0%
61-65	1 0.1%	0 0.0%	0 0.0%	0 0.0%	0 0.0%	0 0.0%
66-70	0 0.0%	0 0.0%	1 0.0%	0 0.0%	0 0.0%	0 0.0%
71-75	0 0.0%	0 0.0%	0 0.0%	0 0.0%	0 0.0%	0 0.0%
75+	0 0.0%	0 0.0%	0 0.0%	0 0.0%	0 0.0%	0 0.0%
Day Total	1,478	2,222	2,142	1,960	438	2,108

Tuesday 7/15/2025 at Jewett Rd S. of US 202/NH 9

Vehicle Class both directions

	1	2	3	4	5	6	7	8	9	10	11	12	13
12-1 AM	0	1	0	0	0	0	0	0	0	0	0	0	0
1-2 AM	0	11	1	0	0	0	0	0	0	0	0	0	0
2-3AM	0	1	0	0	0	0	0	0	0	0	0	0	0
3-4AM	0	2	0	0	1	0	0	0	0	0	0	0	0
4-5AM	0	11	3	0	0	0	0	0	0	0	0	0	0
5-6AM	0	22	14	0	0	1	0	0	0	0	0	0	0
6-7AM	1	49	33	0	3	1	0	1	0	0	0	0	0
7-8AM	2	100	40	0	2	1	0	1	2	0	0	0	0
8-9AM	2	103	34	0	7	0	1	1	0	0	0	0	0
9-10AM	0	86	45	0	5	0	1	1	0	0	0	0	0
10-11AM	1	100	34	0	4	2	1	1	2	0	0	0	0
11-12PM	3	78	30	0	6	1	0	0	1	0	0	0	0
12-1PM	2	87	28	0	2	1	0	0	2	0	0	0	0
1-2PM	3	99	33	0	2	1	0	0	0	0	0	0	0
2-3PM	6	114	34	0	4	1	0	0	1	0	0	0	0
3-4PM	4	120	39	0	3	1	0	0	0	0	0	0	0
4-5PM	2	147	42	0	4	1	0	0	1	0	0	0	0
5-6PM	5	206	60	0	12	1	0	1	0	0	0	0	0
6-7PM	6	83	27	0	1	0	0	1	1	0	0	0	0
7-8PM	2	59	11	0	2	0	0	0	0	0	0	0	0
8-9PM	0	32	13	0	0	0	0	0	1	0	0	0	0
9-10PM	0	32	6	0	0	0	0	0	0	0	0	0	0
10-11PM	0	13	0	0	0	0	0	0	1	0	0	0	0
11-12AM	0	6	2	0	0	0	0	0	0	0	0	0	0
Total	39	1,562	529	0	58	12	3	7	12	0	0	0	0
% of Daily Traffic	1.8%	70.3%	23.8%	0.0%	2.6%	0.5%	0.1%	0.3%	0.5%	0.0%	0.0%	0.0%	0.0%

Wednesday 7/16/2025 at Jewett Rd S. of US 202/NH 9

Vehicle Class both directions

	1	2	3	4	5	6	7	8	9	10	11	12	13
12-1 AM	1	2	2	0	0	0	0	0	0	0	0	0	0
1-2 AM	0	1	0	0	0	0	0	0	0	0	0	0	0
2-3AM	0	3	0	0	0	0	0	0	0	0	0	0	0
3-4AM	0	3	1	0	1	0	0	0	0	0	0	0	0
4-5AM	0	7	6	0	0	0	0	0	0	0	0	0	0
5-6AM	2	24	14	0	0	0	0	1	1	0	0	0	0
6-7AM	3	48	32	0	1	0	0	2	0	0	0	0	0
7-8AM	4	94	40	0	4	2	0	1	3	1	0	0	0
8-9AM	2	95	36	0	4	0	0	1	2	0	0	0	0
9-10AM	2	88	32	0	3	1	0	0	0	0	0	0	0
10-11AM	1	99	32	1	5	0	0	0	1	0	0	0	0
11-12PM	4	84	31	1	7	0	0	0	0	0	0	0	0
12-1PM	4	105	26	0	2	0	0	0	1	0	0	0	0
1-2PM	4	101	23	0	5	2	0	0	0	0	0	0	0
2-3PM	1	104	33	0	5	1	0	1	3	0	0	0	0
3-4PM	7	130	33	0	5	1	0	2	0	0	0	0	0
4-5PM	6	152	45	2	5	0	1	0	1	0	0	0	0
5-6PM	4	124	45	0	4	0	0	1	0	0	0	0	0
6-7PM	3	76	21	0	2	0	0	0	0	0	0	0	0
7-8PM	2	71	14	0	0	0	0	0	0	0	0	0	0
8-9PM	0	51	15	0	0	0	0	0	0	0	0	0	0
9-10PM	2	32	6	0	0	0	0	0	0	0	0	0	0
10-11PM	0	16	0	0	0	0	0	0	1	0	0	0	0
11-12AM	0	5	0	0	0	0	0	0	0	0	0	0	0
Total	52	1,515	487	4	53	7	1	9	13	1	0	0	0
% of Daily Traffic	2.4%	70.7%	22.7%	0.2%	2.5%	0.3%	0.0%	0.4%	0.6%	0.0%	0.0%	0.0%	0.0%

Thursday 7/17/2025 at Jewett Rd S. of US 202/NH 9

Vehicle Class both directions

	1	2	3	4	5	6	7	8	9	10	11	12	13
12-1 AM	0	5	1	0	1	0	0	1	0	0	0	0	0
1-2 AM	0	2	1	0	0	0	0	0	0	0	0	0	0
2-3AM	0	1	1	0	0	0	0	0	1	0	0	0	0
3-4AM	0	3	3	0	0	0	0	0	0	0	0	0	0
4-5AM	0	11	2	0	0	0	0	0	0	0	0	0	0
5-6AM	0	23	14	0	0	0	0	0	1	0	0	0	0
6-7AM	1	46	24	0	1	2	0	0	2	0	1	0	0
7-8AM	1	80	38	0	1	3	1	2	2	0	0	0	0
8-9AM	0	78	31	0	4	1	0	1	0	0	0	0	0
9-10AM	0	93	33	0	0	3	0	0	4	0	0	0	0
10-11AM	1	98	29	0	4	5	0	2	1	0	0	0	0
11-12PM	2	66	35	0	1	2	0	0	0	0	0	0	0
12-1PM	1	76	32	0	1	1	0	1	1	0	0	0	0
1-2PM	0	83	37	0	5	2	0	2	0	0	0	0	0
2-3PM	5	93	29	0	6	1	0	1	1	1	0	0	0
3-4PM	1	95	34	1	3	0	0	1	1	0	0	0	0
4-5PM	7	133	44	0	2	1	0	0	1	0	0	0	0
5-6PM	6	133	40	0	5	1	0	0	0	0	0	0	0
6-7PM	2	81	27	0	2	0	0	1	0	0	0	0	0
7-8PM	3	55	9	0	1	0	0	0	0	0	0	0	0
8-9PM	0	51	9	0	2	0	0	0	0	0	0	0	0
9-10PM	0	28	4	0	1	0	0	0	1	0	0	0	0
10-11PM	0	16	3	0	0	0	0	0	0	0	0	0	0
11-12AM	0	6	0	0	0	0	0	0	0	0	0	0	0
Total	30	1,356	480	1	40	22	1	12	16	1	1	0	0
% of Daily Traffic	1.5%	69.2%	24.5%	0.1%	2.0%	1.1%	0.1%	0.6%	0.8%	0.1%	0.1%	0.0%	0.0%

Tuesday 7/15/2025 at Jewett Rd S. of US 202/NH 9

	Speed (mph) both directions											
	0-25	26-30	31-35	36-40	41-45	46-50	51-55	56-60	61-65	66-70	71-75	75+
12-1 AM	0	0	0	1	0	0	0	0	0	0	0	0
1-2 AM	2	0	0	9	1	0	0	0	0	0	0	0
2-3AM	0	0	0	0	1	0	0	0	0	0	0	0
3-4AM	0	0	0	2	1	0	0	0	0	0	0	0
4-5AM	0	0	4	10	0	0	0	0	0	0	0	0
5-6AM	0	1	11	21	3	0	1	0	0	0	0	0
6-7AM	1	0	21	47	16	2	1	0	0	0	0	0
7-8AM	0	4	57	72	14	1	0	0	0	0	0	0
8-9AM	2	2	47	79	17	1	0	0	0	0	0	0
9-10AM	2	4	49	67	14	2	0	0	0	0	0	0
10-11AM	2	8	53	65	17	0	0	0	0	0	0	0
11-12PM	2	4	47	60	5	0	1	0	0	0	0	0
12-1PM	4	2	42	57	16	1	0	0	0	0	0	0
1-2PM	0	2	54	65	16	0	1	0	0	0	0	0
2-3PM	1	2	58	84	14	1	0	0	0	0	0	0
3-4PM	0	5	63	83	16	0	0	0	0	0	0	0
4-5PM	1	3	62	107	24	0	0	0	0	0	0	0
5-6PM	3	1	88	160	30	3	0	0	0	0	0	0
6-7PM	0	3	37	61	16	2	0	0	0	0	0	0
7-8PM	1	1	26	35	11	0	0	0	0	0	0	0
8-9PM	0	1	15	22	7	1	0	0	0	0	0	0
9-10PM	0	0	13	19	5	1	0	0	0	0	0	0
10-11PM	0	0	4	8	2	0	0	0	0	0	0	0
11-12AM	0	0	2	2	3	1	0	0	0	0	0	0
Total	21	43	753	1,136	249	16	4	0	0	0	0	0
% of Daily Traffic	0.9%	1.9%	33.9%	51.1%	11.2%	0.7%	0.2%	0.0%	0.0%	0.0%	0.0%	0.0%

Wednesday 7/16/2025 at Jewett Rd S. of US 202/NH 9

Speed (mph) both directions

	0-25	26-30	31-35	36-40	41-45	46-50	51-55	56-60	61-65	66-70	71-75	75+
12-1 AM	0	0	0	5	0	0	0	0	0	0	0	0
1-2 AM	0	0	0	0	1	0	0	0	0	0	0	0
2-3AM	0	0	1	2	0	0	0	0	0	0	0	0
3-4AM	0	0	2	2	0	1	0	0	0	0	0	0
4-5AM	0	0	3	8	1	1	0	0	0	0	0	0
5-6AM	2	0	11	20	5	2	0	1	0	1	0	0
6-7AM	2	1	23	44	16	0	0	0	0	0	0	0
7-8AM	1	2	37	92	17	0	0	0	0	0	0	0
8-9AM	0	1	30	92	15	2	0	0	0	0	0	0
9-10AM	0	0	47	70	8	0	1	0	0	0	0	0
10-11AM	0	4	67	52	16	0	0	0	0	0	0	0
11-12PM	3	3	48	62	11	0	0	0	0	0	0	0
12-1PM	2	2	46	71	14	2	1	0	0	0	0	0
1-2PM	0	1	53	68	12	1	0	0	0	0	0	0
2-3PM	3	5	53	69	17	1	0	0	0	0	0	0
3-4PM	0	3	66	88	19	2	0	0	0	0	0	0
4-5PM	4	3	71	113	20	1	0	0	0	0	0	0
5-6PM	0	5	46	103	23	1	0	0	0	0	0	0
6-7PM	0	1	36	44	19	2	0	0	0	0	0	0
7-8PM	0	0	25	48	14	0	0	0	0	0	0	0
8-9PM	0	0	26	28	8	4	0	0	0	0	0	0
9-10PM	0	0	15	21	2	2	0	0	0	0	0	0
10-11PM	1	0	8	3	4	1	0	0	0	0	0	0
11-12AM	0	0	2	3	0	0	0	0	0	0	0	0
Total	18	31	716	1,108	242	23	2	1	0	1	0	0
% of Daily Traffic	0.8%	1.4%	33.4%	51.7%	11.3%	1.1%	0.1%	0.0%	0.0%	0.0%	0.0%	0.0%

Thursday 7/17/2025 at Jewett Rd S. of US 202/NH 9

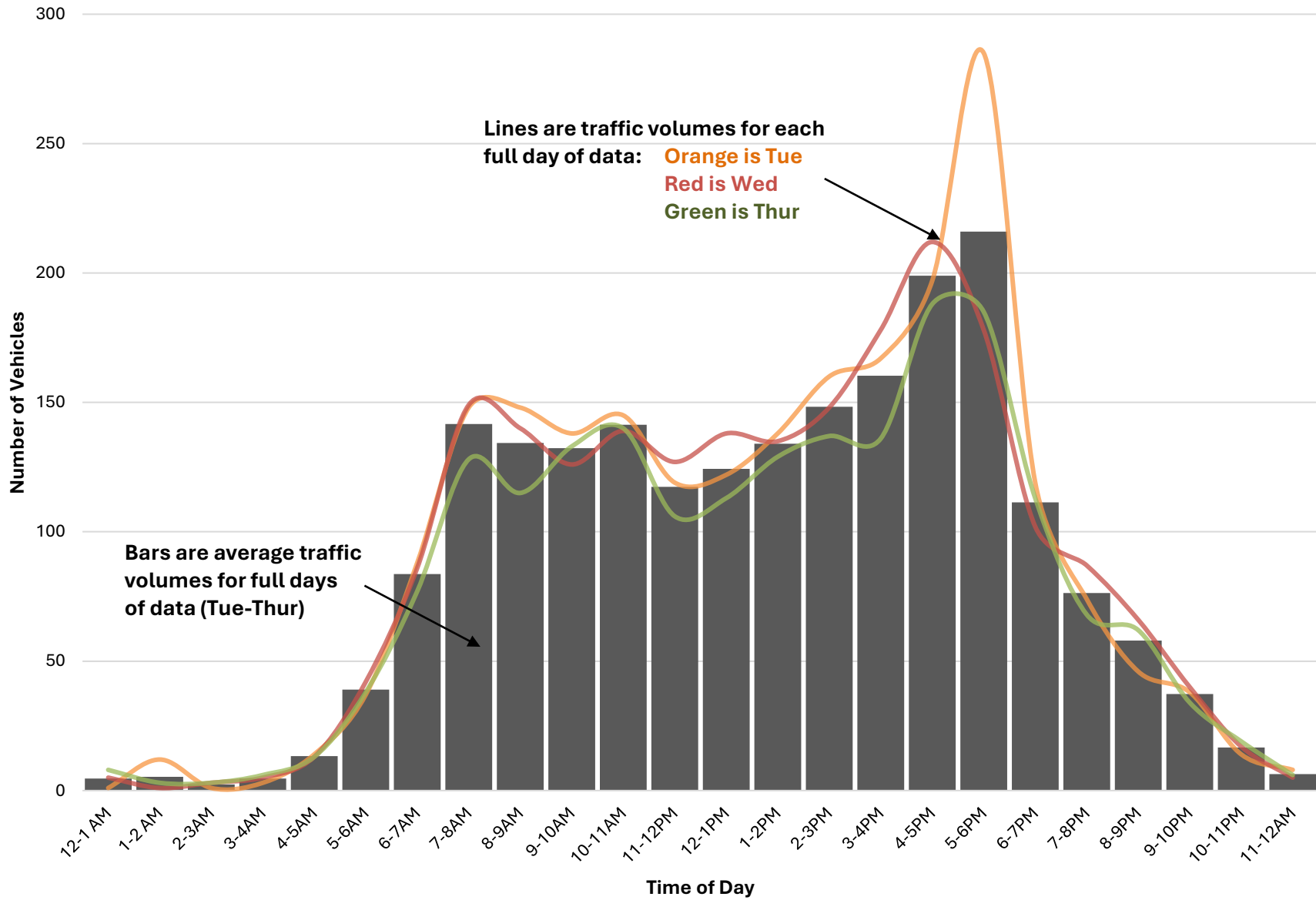
	Speed (mph) both directions											
	0-25	26-30	31-35	36-40	41-45	46-50	51-55	56-60	61-65	66-70	71-75	75+
12-1 AM	0	0	5	3	0	0	0	0	0	0	0	0
1-2 AM	0	0	0	3	0	0	0	0	0	0	0	0
2-3AM	0	0	0	2	1	0	0	0	0	0	0	0
3-4AM	0	0	0	5	0	0	1	0	0	0	0	0
4-5AM	0	0	3	7	3	0	0	0	0	0	0	0
5-6AM	0	0	4	28	5	1	0	0	0	0	0	0
6-7AM	1	2	16	44	11	3	0	0	0	0	0	0
7-8AM	2	1	36	78	11	0	0	0	0	0	0	0
8-9AM	0	3	38	61	9	3	1	0	0	0	0	0
9-10AM	0	7	47	68	9	1	1	0	0	0	0	0
10-11AM	5	7	53	59	14	1	1	0	0	0	0	0
11-12PM	1	3	40	57	5	0	0	0	0	0	0	0
12-1PM	1	2	39	57	13	1	0	0	0	0	0	0
1-2PM	1	3	53	59	13	0	0	0	0	0	0	0
2-3PM	1	4	48	65	16	3	0	0	0	0	0	0
3-4PM	0	6	36	83	7	4	0	0	0	0	0	0
4-5PM	1	2	60	102	22	1	0	0	0	0	0	0
5-6PM	2	4	52	102	21	2	1	1	0	0	0	0
6-7PM	1	3	40	47	21	1	0	0	0	0	0	0
7-8PM	3	2	23	30	9	0	0	1	0	0	0	0
8-9PM	1	1	21	31	8	0	0	0	0	0	0	0
9-10PM	0	0	15	14	5	0	0	0	0	0	0	0
10-11PM	1	2	4	9	2	1	0	0	0	0	0	0
11-12AM	0	0	3	3	0	0	0	0	0	0	0	0
Total	21	52	636	1,017	205	22	5	2	0	0	0	0
% of Daily Traffic	1.1%	2.7%	32.4%	51.9%	10.5%	1.1%	0.3%	0.1%	0.0%	0.0%	0.0%	0.0%

Jewett Rd S. of US 202/NH 9 (both ways)

	Mon 7/14/25	Tue 7/15/25	Wed 7/16/25	Thur 7/17/25	Fri 7/18/25	Full Day Avg (Tue-Thur)
12-1 AM	0	1	5	8	2	5
1-2 AM	0	12	1	3	7	5
2-3AM	0	1	3	3	3	2
3-4AM	0	3	5	6	6	5
4-5AM	0	14	13	13	10	13
5-6AM	0	37	42	38	34	39
6-7AM	0	88	86	77	69	84
7-8AM	0	148	149	128	115	142
8-9AM	0	148	140	115	139	134
9-10AM	8	138	126	133	53	132
10-11AM	132	145	139	140	0	141
11-12PM	128	119	127	106	0	117
12-1PM	130	122	138	113	0	124
1-2PM	115	138	135	129	0	134
2-3PM	136	160	148	137	0	148
3-4PM	176	167	178	136	0	160
4-5PM	191	197	212	188	0	199
5-6PM	181	285	178	185	0	216
6-7PM	104	119	102	113	0	111
7-8PM	64	74	87	68	0	76
8-9PM	63	46	66	62	0	58
9-10PM	29	38	40	34	0	37
10-11PM	16	14	17	19	0	17
11-12AM	5	8	5	6	0	6
	1,478	2,222	2,142	1,960	438	2,108

- The average peak volume is 216 vehicles occurring between 5-6PM
- The highest recorded peak volume was 285 vehicles on Tue between 5-6PM
- The Average Daily Traffic Volume is 2,108

Daily Traffic Profile at Jewett Rd S. of US 202/NH 9 (both ways)

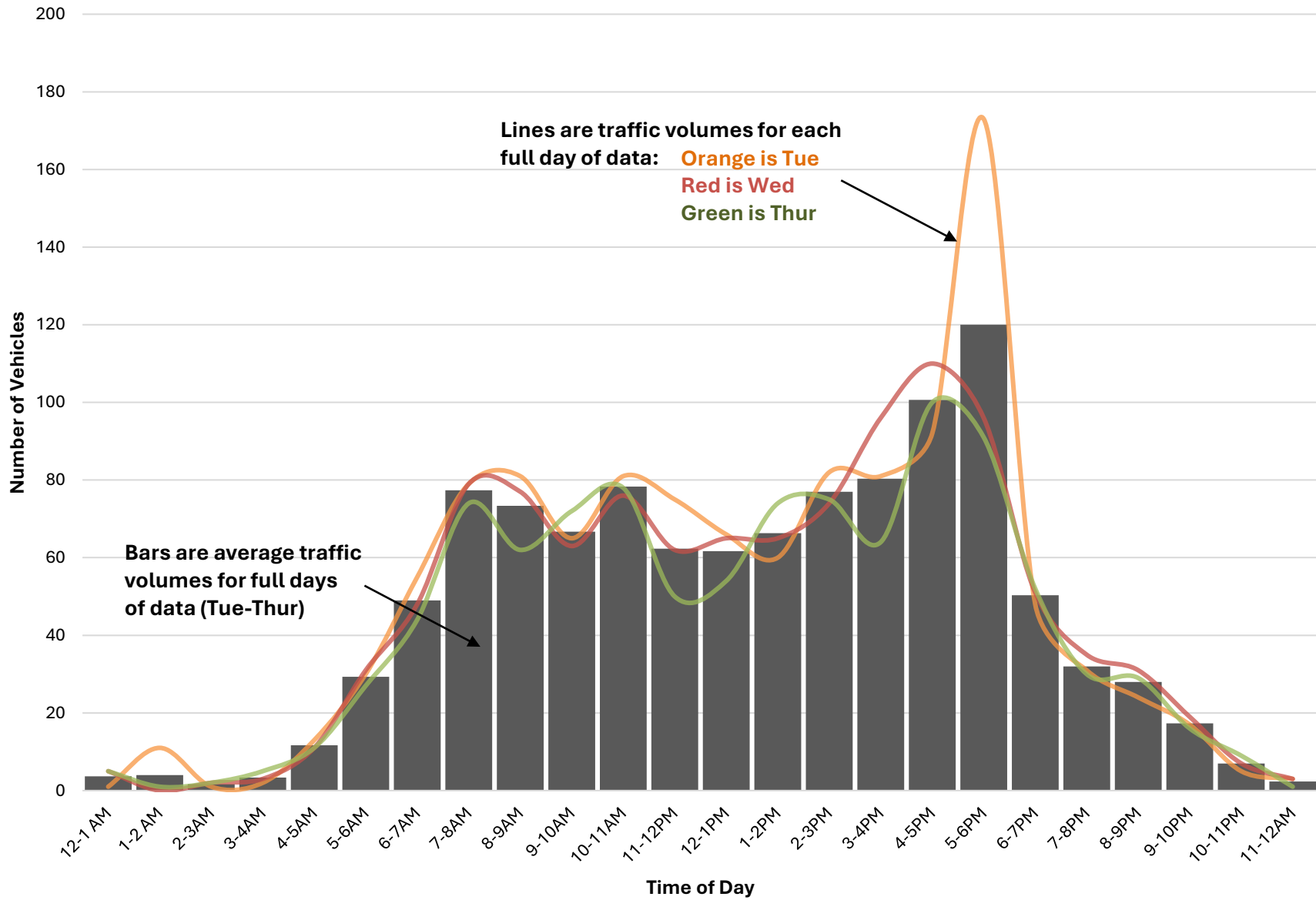


Jewett Rd S. of US 202/NH 9 (NB)

	Mon 7/14/25	Tue 7/15/25	Wed 7/16/25	Thur 7/17/25	Fri 7/18/25	Full Day Avg (Tue-Thur)
12-1 AM	0	1	5	5	0	4
1-2 AM	0	11	0	1	3	4
2-3AM	0	1	2	2	3	2
3-4AM	0	2	3	5	2	3
4-5AM	0	13	11	11	9	12
5-6AM	0	30	31	27	25	29
6-7AM	0	55	48	44	38	49
7-8AM	0	79	79	74	68	77
8-9AM	0	81	77	62	71	73
9-10AM	2	65	63	72	27	67
10-11AM	81	81	76	78	0	78
11-12PM	65	75	62	50	0	62
12-1PM	63	66	65	54	0	62
1-2PM	51	60	65	74	0	66
2-3PM	61	82	74	75	0	77
3-4PM	77	81	96	64	0	80
4-5PM	95	92	110	100	0	101
5-6PM	84	173	96	91	0	120
6-7PM	50	48	51	52	0	50
7-8PM	28	31	35	30	0	32
8-9PM	38	24	31	29	0	28
9-10PM	16	17	19	16	0	17
10-11PM	12	5	7	9	0	7
11-12AM	2	3	3	1	0	2
	725	1,176	1,109	1,026	246	1,104

- The average peak volume is 120 vehicles occurring between 5-6PM
- The highest recorded peak volume was 173 vehicles on Tue between 5-6PM
- The Average Daily Traffic Volume is 1,104

Daily Traffic Profile at Jewett Rd S. of US 202/NH 9 (NB)

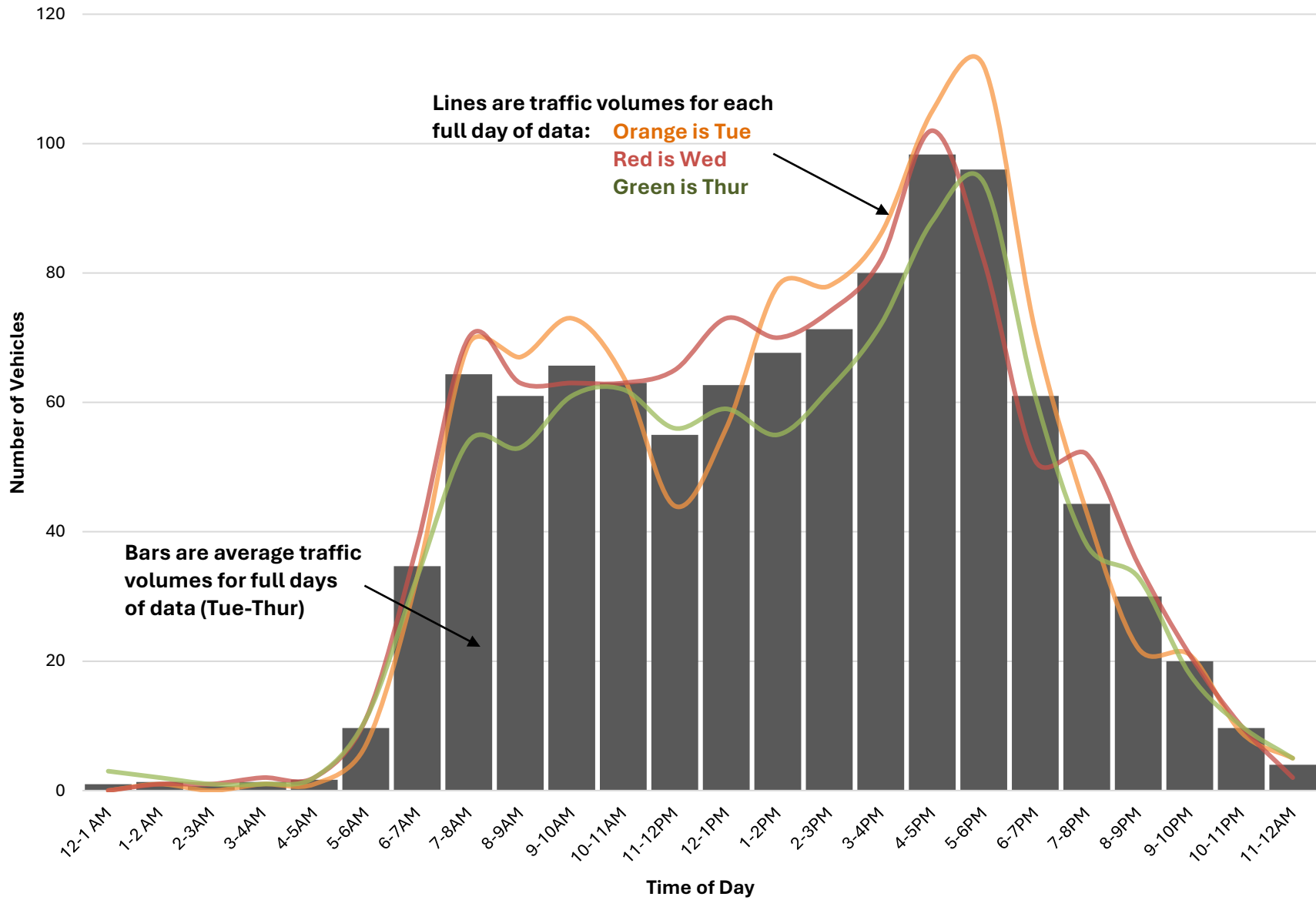


Jewett Rd S. of US 202/NH 9 (SB)

	Mon 7/14/25	Tue 7/15/25	Wed 7/16/25	Thur 7/17/25	Fri 7/18/25	Full Day Avg (Tue-Thur)
12-1 AM	0	0	0	3	2	1
1-2 AM	0	1	1	2	4	1
2-3AM	0	0	1	1	0	1
3-4AM	0	1	2	1	4	1
4-5AM	0	1	2	2	1	2
5-6AM	0	7	11	11	9	10
6-7AM	0	33	38	33	31	35
7-8AM	0	69	70	54	47	64
8-9AM	0	67	63	53	68	61
9-10AM	6	73	63	61	26	66
10-11AM	51	64	63	62	0	63
11-12PM	63	44	65	56	0	55
12-1PM	67	56	73	59	0	63
1-2PM	64	78	70	55	0	68
2-3PM	75	78	74	62	0	71
3-4PM	99	86	82	72	0	80
4-5PM	96	105	102	88	0	98
5-6PM	97	112	82	94	0	96
6-7PM	54	71	51	61	0	61
7-8PM	36	43	52	38	0	44
8-9PM	25	22	35	33	0	30
9-10PM	13	21	21	18	0	20
10-11PM	4	9	10	10	0	10
11-12AM	3	5	2	5	0	4
	753	1,046	1,033	934	192	1,004

- The average peak volume is 98 vehicles occurring between 4-5PM
- The highest recorded peak volume was 112 vehicles on Tue between 5-6PM
- The Average Daily Traffic Volume is 1,004

Daily Traffic Profile at Jewett Rd S. of US 202/NH 9 (SB)



NH 127 (Maple St) N. of Dolly Rd

Vehicle Class	Mon 8/4/2025	Tue 8/5/2025	Wed 8/6/2025	Thur 8/7/2025	Fri 8/8/2025	Full Day Avg (Tue-Thur)
1	39	38	44	59	5	47
<i>Motorcycles</i>	1.5%	0.9%	1.1%	1.4%	0.5%	1.2%
2	1,825	2,746	2,744	2,872	668	2,787
<i>Passenger Cars</i>	69.7%	67.3%	68.5%	69.3%	64.6%	68.4%
3	616	993	973	938	266	968
<i>Pickups/Vans</i>	23.5%	24.3%	24.3%	22.6%	25.7%	23.7%
4	2	2	3	7	0	4
<i>Buses</i>	0.1%	0.0%	0.1%	0.2%	0.0%	0.1%
5	75	173	131	126	49	143
<i>Single-Unit, 2-Axel</i>	2.9%	4.2%	3.3%	3.0%	4.7%	3.5%
6	19	47	30	47	17	41
<i>Single-Unit, 3-Axel</i>	0.7%	1.2%	0.7%	1.1%	1.6%	1.0%
7	1	5	4	8	4	6
<i>Single-Unit, 4+ Axel</i>	0.0%	0.1%	0.1%	0.2%	0.4%	0.1%
8	16	34	27	19	5	27
<i>Single Trailer, 3/4 Axel</i>	0.6%	0.8%	0.7%	0.5%	0.5%	0.7%
9	18	36	43	53	16	44
<i>Single Trailer, 5-Axel</i>	0.7%	0.9%	1.1%	1.3%	1.5%	1.1%
10	5	8	9	14	4	10
<i>Single Trailer, 6+ Axel</i>	0.2%	0.2%	0.2%	0.3%	0.4%	0.3%
11	0	1	0	0	0	0
<i>Multi-Trailer, 5 or less Axel</i>	0.0%	0.0%	0.0%	0.0%	0.0%	0.0%
12	0	0	0	0	0	0
<i>Multi-Trailer, 6-Axel</i>	0.0%	0.0%	0.0%	0.0%	0.0%	0.0%
13	1	0	0	0	0	0
<i>Multi-Trailer, 7+ Axel</i>	0.0%	0.0%	0.0%	0.0%	0.0%	0.0%
Day Total	2,617	4,083	4,008	4,143	1,034	4,078

NH 127 (Maple St) N. of Dolly Rd

Speed (mph)	Mon 8/4/2025	Tue 8/5/2025	Wed 8/6/2025	Thur 8/7/2025	Fri 8/8/2025	Full Day Avg (Tue-Thur)
0-25	87	98	217	96	29	137
	3.3%	2.4%	5.4%	2.3%	2.8%	3.4%
26-30	758	888	1,029	939	184	952
	29.0%	21.7%	25.7%	22.7%	17.8%	23.3%
31-35	1,027	1,601	1,421	1,538	347	1,520
	39.2%	39.2%	35.5%	37.1%	33.6%	37.3%
36-40	507	1,038	940	1,097	306	1,025
	19.4%	25.4%	23.5%	26.5%	29.6%	25.1%
41-45	218	425	373	438	151	412
	8.3%	10.4%	9.3%	10.6%	14.6%	10.1%
46-50	16	31	24	34	15	30
	0.6%	0.8%	0.6%	0.8%	1.5%	0.7%
51-55	3	2	3	1	2	2
	0.1%	0.0%	0.1%	0.0%	0.2%	0.0%
56-60	1	0	0	0	0	0
	0.0%	0.0%	0.0%	0.0%	0.0%	0.0%
61-65	0	0	1	0	0	0
	0.0%	0.0%	0.0%	0.0%	0.0%	0.0%
66-70	0	0	0	0	0	0
	0.0%	0.0%	0.0%	0.0%	0.0%	0.0%
71-75	0	0	0	0	0	0
	0.0%	0.0%	0.0%	0.0%	0.0%	0.0%
75+	0	0	0	0	0	0
	0.0%	0.0%	0.0%	0.0%	0.0%	0.0%
Day Total	2,617	4,083	4,008	4,143	1,034	4,078

Wednesday 8/5/2025 at NH 127 (Maple St) N. of Dolly Rd

Speed (mph) both directions

	0-25	26-30	31-35	36-40	41-45	46-50	51-55	56-60	61-65	66-70	71-75	75+
12-1 AM	0	4	4	1	2	0	0	0	0	0	0	0
1-2 AM	0	3	2	0	1	2	0	0	0	0	0	0
2-3AM	0	1	3	1	2	0	0	0	0	0	0	0
3-4AM	0	2	1	5	3	0	0	0	0	0	0	0
4-5AM	0	6	10	16	11	1	0	0	0	0	0	0
5-6AM	0	17	40	43	17	2	1	0	0	0	0	0
6-7AM	7	37	70	46	30	0	1	0	0	0	0	0
7-8AM	17	55	80	108	26	1	0	0	0	0	0	0
8-9AM	5	57	92	78	28	1	0	0	0	0	0	0
9-10AM	31	48	92	52	11	0	0	0	0	0	0	0
10-11AM	42	80	51	29	11	1	0	0	0	0	0	0
11-12PM	42	92	64	26	9	0	0	0	0	0	0	0
12-1PM	11	58	95	44	12	2	0	0	0	0	0	0
1-2PM	6	70	98	62	21	0	0	0	0	0	0	0
2-3PM	6	76	95	68	32	0	0	0	0	0	0	0
3-4PM	6	62	125	87	46	2	0	0	0	0	0	0
4-5PM	14	78	140	90	36	1	0	0	0	0	0	0
5-6PM	14	99	144	53	28	4	0	0	0	0	0	0
6-7PM	3	60	82	41	16	3	1	0	0	0	0	0
7-8PM	4	46	58	43	11	1	0	0	1	0	0	0
8-9PM	4	34	38	32	9	0	0	0	0	0	0	0
9-10PM	1	17	16	10	7	1	0	0	0	0	0	0
10-11PM	1	14	15	5	2	0	0	0	0	0	0	0
11-12AM	3	13	6	0	2	2	0	0	0	0	0	0
Total	217	1,029	1,421	940	373	24	3	0	1	0	0	0
% of Daily Traffic	5.4%	25.7%	35.5%	23.5%	9.3%	0.6%	0.1%	0.0%	0.0%	0.0%	0.0%	0.0%

Tuesday 8/4/2025 at NH 127 (Maple St) N. of Dolly Rd

Vehicle Class both directions

	1	2	3	4	5	6	7	8	9	10	11	12	13
12-1 AM	0	10	3	0	0	0	0	0	0	0	0	0	0
1-2 AM	0	9	3	0	0	0	0	0	0	0	0	0	0
2-3AM	0	5	3	0	0	0	0	0	0	0	1	0	0
3-4AM	0	7	1	0	1	0	0	0	2	0	0	0	0
4-5AM	0	35	10	0	1	0	0	0	1	0	0	0	0
5-6AM	2	57	38	0	9	1	0	1	1	0	0	0	0
6-7AM	6	120	78	0	10	1	0	3	1	0	0	0	0
7-8AM	1	195	72	0	15	3	1	3	4	0	0	0	0
8-9AM	0	181	58	1	8	6	1	1	2	0	0	0	0
9-10AM	0	135	59	0	14	9	0	3	1	0	0	0	0
10-11AM	1	155	58	0	15	9	1	1	3	0	0	0	0
11-12PM	2	142	49	0	14	4	2	3	1	1	0	0	0
12-1PM	3	203	74	0	21	7	0	2	5	0	0	0	0
1-2PM	1	174	54	1	10	3	0	3	1	1	0	0	0
2-3PM	1	183	62	0	13	2	0	6	6	1	0	0	0
3-4PM	1	224	90	0	19	0	0	4	2	1	0	0	0
4-5PM	4	230	96	0	9	1	0	2	1	2	0	0	0
5-6PM	5	223	78	0	6	1	0	1	3	0	0	0	0
6-7PM	5	162	50	0	5	0	0	0	1	1	0	0	0
7-8PM	1	118	22	0	2	0	0	1	0	0	0	0	0
8-9PM	1	96	21	0	0	0	0	0	0	0	0	0	0
9-10PM	1	39	8	0	0	0	0	0	1	0	0	0	0
10-11PM	3	25	4	0	1	0	0	0	0	0	0	0	0
11-12AM	0	18	2	0	0	0	0	0	0	1	0	0	0
Total	38	2,746	993	2	173	47	5	34	36	8	1	0	0
% of Daily Traffic	0.9%	67.3%	24.3%	0.0%	4.2%	1.2%	0.1%	0.8%	0.9%	0.2%	0.0%	0.0%	0.0%

Wednesday 8/5/2025 at NH 127 (Maple St) N. of Dolly Rd

Vehicle Class both directions

	1	2	3	4	5	6	7	8	9	10	11	12	13
12-1 AM	0	8	2	0	0	0	0	0	1	0	0	0	0
1-2 AM	0	7	1	0	0	0	0	0	0	0	0	0	0
2-3AM	0	6	0	0	0	0	0	1	0	0	0	0	0
3-4AM	0	5	2	0	1	0	0	0	3	0	0	0	0
4-5AM	1	29	10	0	0	2	0	1	1	0	0	0	0
5-6AM	2	65	42	0	5	2	0	1	3	0	0	0	0
6-7AM	1	112	67	0	6	0	0	3	1	1	0	0	0
7-8AM	1	185	77	1	15	0	1	3	2	2	0	0	0
8-9AM	3	186	58	0	7	2	0	1	4	0	0	0	0
9-10AM	0	163	57	0	8	2	1	0	2	1	0	0	0
10-11AM	2	143	50	0	9	4	1	3	2	0	0	0	0
11-12PM	4	171	39	0	8	5	0	3	2	1	0	0	0
12-1PM	4	147	47	0	17	1	0	1	3	2	0	0	0
1-2PM	1	156	75	0	11	7	1	2	4	0	0	0	0
2-3PM	4	195	59	0	9	3	0	3	3	1	0	0	0
3-4PM	5	222	82	1	12	1	0	3	1	1	0	0	0
4-5PM	5	243	101	0	5	1	0	1	3	0	0	0	0
5-6PM	4	234	88	1	9	0	0	0	6	0	0	0	0
6-7PM	1	151	46	0	6	0	0	1	1	0	0	0	0
7-8PM	3	122	35	0	3	0	0	0	1	0	0	0	0
8-9PM	2	96	19	0	0	0	0	0	0	0	0	0	0
9-10PM	0	45	7	0	0	0	0	0	0	0	0	0	0
10-11PM	1	31	5	0	0	0	0	0	0	0	0	0	0
11-12AM	0	22	4	0	0	0	0	0	0	0	0	0	0
Total	44	2,744	973	3	131	30	4	27	43	9	0	0	0
% of Daily Traffic	1.1%	68.5%	24.3%	0.1%	3.3%	0.7%	0.1%	0.7%	1.1%	0.2%	0.0%	0.0%	0.0%

Thursday 8/6/2025 at NH 127 (Maple St) N. of Dolly Rd

Vehicle Class both directions

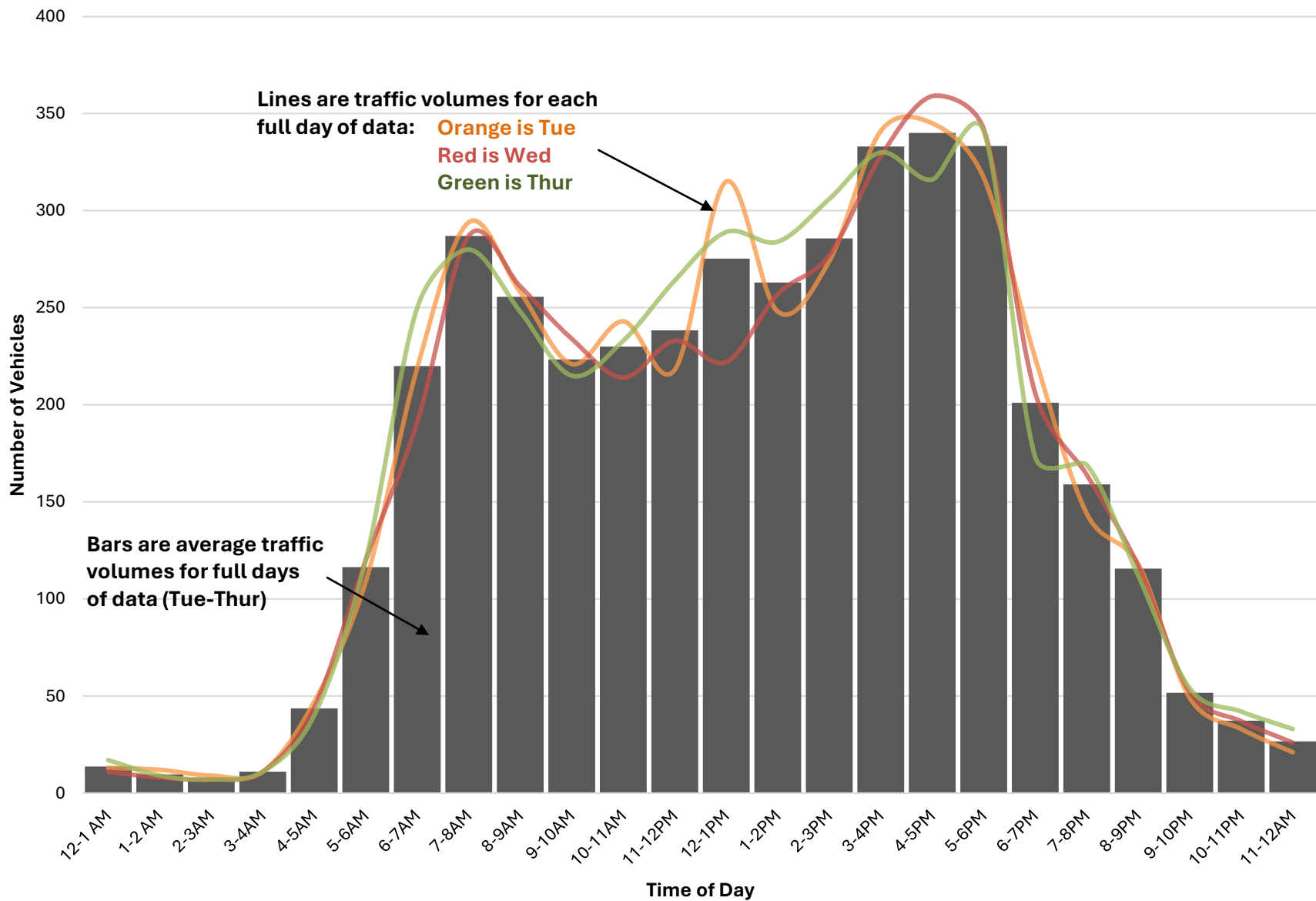
	1	2	3	4	5	6	7	8	9	10	11	12	13
12-1 AM	0	15	1	0	0	1	0	0	0	0	0	0	0
1-2 AM	0	6	2	0	1	0	0	0	0	0	0	0	0
2-3AM	0	4	1	0	0	0	0	0	2	0	0	0	0
3-4AM	0	4	1	0	3	0	0	0	3	0	0	0	0
4-5AM	0	31	8	0	1	0	0	0	0	0	0	0	0
5-6AM	0	70	37	0	6	2	0	1	3	1	0	0	0
6-7AM	8	132	90	0	9	4	0	2	3	2	0	0	0
7-8AM	2	179	73	1	12	5	2	1	3	2	0	0	0
8-9AM	1	170	53	1	10	5	0	1	5	2	0	0	0
9-10AM	2	136	55	0	8	1	1	1	10	1	0	0	0
10-11AM	1	171	42	1	6	5	0	1	3	3	0	0	0
11-12PM	7	179	52	0	11	4	1	3	7	0	0	0	0
12-1PM	0	192	68	0	12	9	0	1	7	0	0	0	0
1-2PM	18	185	61	0	8	5	1	3	3	0	0	0	0
2-3PM	5	205	76	0	9	5	2	2	1	1	0	0	0
3-4PM	2	238	74	0	10	1	1	1	2	1	0	0	0
4-5PM	0	243	64	0	5	0	0	2	1	1	0	0	0
5-6PM	4	253	80	0	4	0	0	0	0	0	0	0	0
6-7PM	3	135	29	1	5	0	0	0	0	0	0	0	0
7-8PM	2	128	34	0	5	0	0	0	0	0	0	0	0
8-9PM	2	89	17	3	1	0	0	0	0	0	0	0	0
9-10PM	1	45	8	0	0	0	0	0	0	0	0	0	0
10-11PM	1	39	2	0	0	0	0	0	0	0	0	0	0
11-12AM	0	23	10	0	0	0	0	0	0	0	0	0	0
Total	59	2,872	938	7	126	47	8	19	53	14	0	0	0
% of Daily Traffic	1.4%	69.3%	22.6%	0.2%	3.0%	1.1%	0.2%	0.5%	1.3%	0.3%	0.0%	0.0%	0.0%

NH 127 (Maple St) N. of Dolly Rd (both ways)

	Mon 8/4/25	Tue 8/5/25	Wed 8/6/25	Thur 8/7/25	Fri 8/8/25	Full Day Avg (Tue-Thur)
12-1 AM	0	13	11	17	16	14
1-2 AM	0	12	8	9	15	10
2-3AM	0	9	7	7	9	8
3-4AM	0	11	11	11	12	11
4-5AM	0	47	44	40	43	44
5-6AM	0	109	120	120	92	116
6-7AM	0	219	191	250	190	220
7-8AM	0	294	287	280	240	287
8-9AM	0	258	261	248	235	256
9-10AM	0	221	234	215	182	223
10-11AM	0	243	214	233	0	230
11-12PM	98	218	233	264	0	238
12-1PM	235	315	222	289	0	275
1-2PM	242	248	257	284	0	263
2-3PM	268	274	277	306	0	286
3-4PM	343	341	328	330	0	333
4-5PM	529	345	359	316	0	340
5-6PM	387	317	342	341	0	333
6-7PM	199	224	206	173	0	201
7-8PM	140	144	164	169	0	159
8-9PM	87	118	117	112	0	116
9-10PM	48	49	52	54	0	52
10-11PM	17	33	37	42	0	37
11-12AM	24	21	26	33	0	27
	2,617	4,083	4,008	4,143	1,034	4,078

- The average peak volume is 340 vehicles occurring between 4-5PM
- The highest recorded peak volume was 529 vehicles on Mon between 4-5PM
- The Average Daily Traffic Volume is 4,078

Daily Traffic Profile at NH 127 (Maple St) N. of Dolly Rd (both ways)

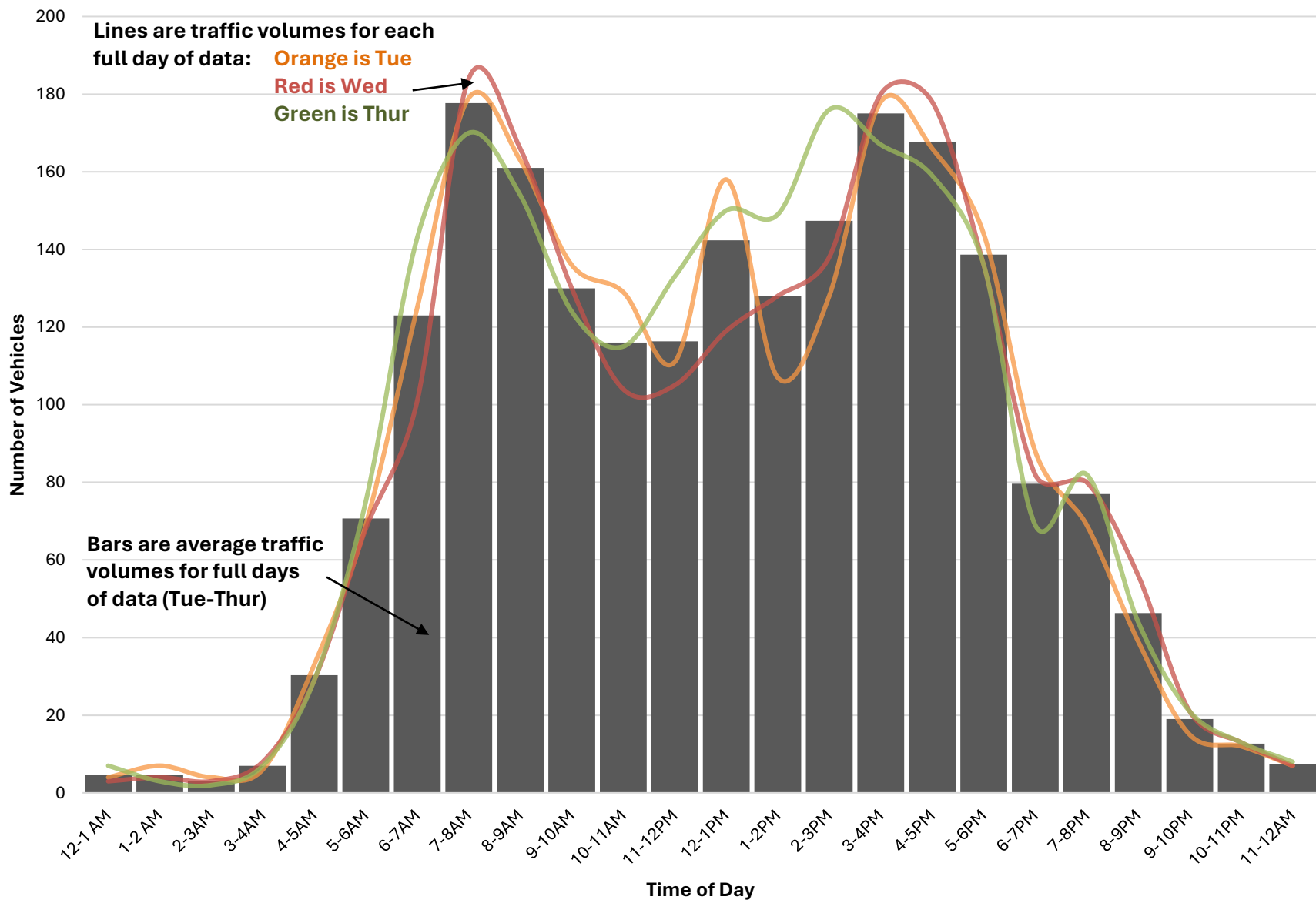


NH 127 (Maple St) N. of Dolly Rd (SB)

	Mon 8/4/25	Tue 8/5/25	Wed 8/6/25	Thur 8/7/25	Fri 8/8/25	Full Day Avg (Tue-Thur)
12-1 AM	0	4	3	7	5	5
1-2 AM	0	7	4	3	5	5
2-3AM	0	4	3	2	5	3
3-4AM	0	6	8	7	7	7
4-5AM	0	33	29	29	26	30
5-6AM	0	69	68	75	64	71
6-7AM	0	125	101	143	103	123
7-8AM	0	179	184	170	147	178
8-9AM	0	163	166	154	150	161
9-10AM	0	136	130	124	107	130
10-11AM	0	129	104	115	0	116
11-12PM	51	111	105	133	0	116
12-1PM	119	158	119	150	0	142
1-2PM	113	107	128	149	0	128
2-3PM	134	128	138	176	0	147
3-4PM	176	178	180	167	0	175
4-5PM	177	166	178	159	0	168
5-6PM	149	144	136	136	0	139
6-7PM	69	88	82	69	0	80
7-8PM	74	69	80	82	0	77
8-9PM	36	39	56	44	0	46
9-10PM	13	15	21	21	0	19
10-11PM	6	12	13	13	0	13
11-12AM	11	7	7	8	0	7
	1,128	2,077	2,043	2,136	619	2,085

- The average peak volume is 178 vehicles occurring between 7-8AM
- The highest recorded peak volume was 184 vehicles on Wed between 7-8AM
- The Average Daily Traffic Volume is 2,085

Daily Traffic Profile at NH 127 (Maple St) N. of Dolly Rd (SB)

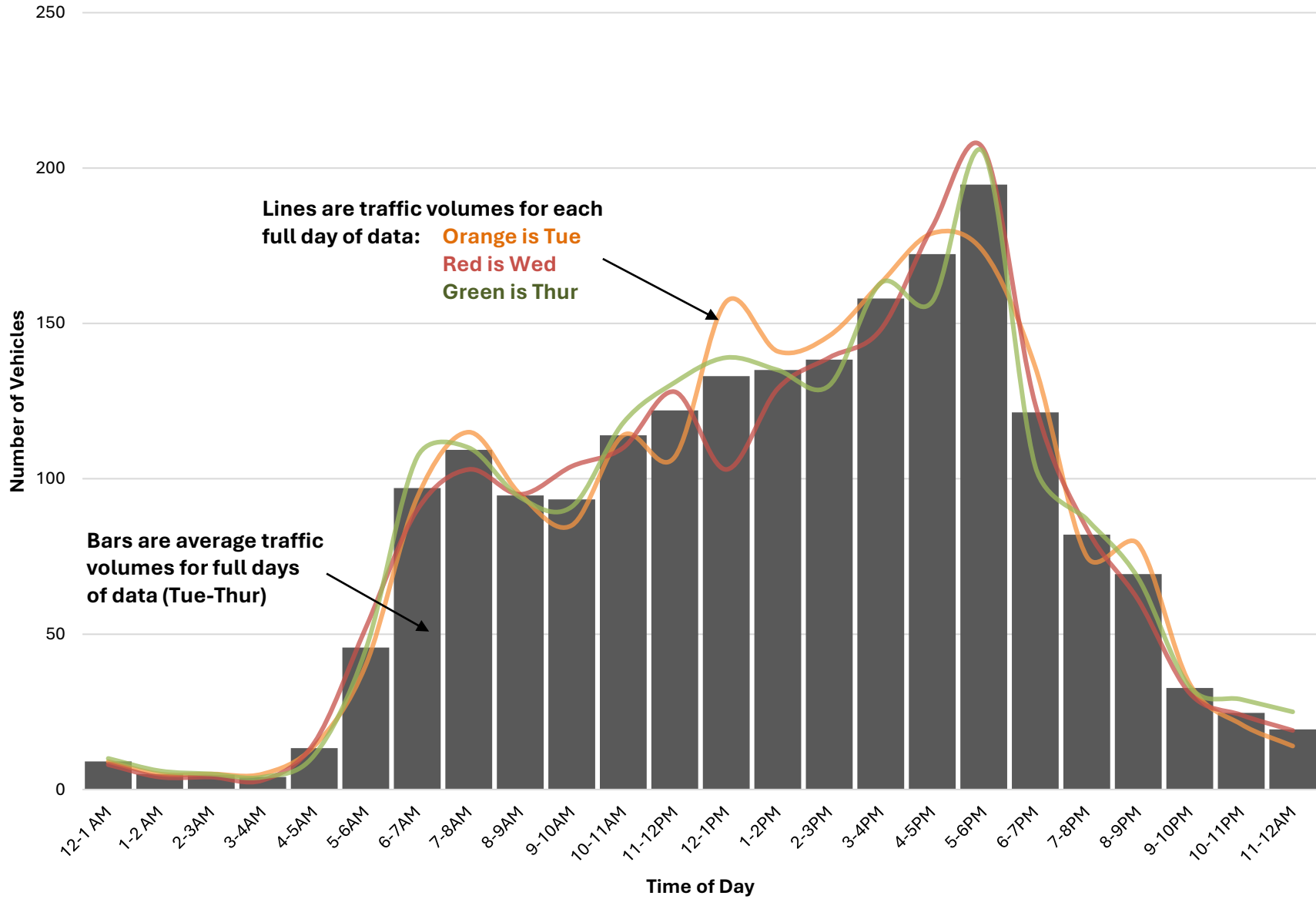


NH 127 (Maple St) N. of Dolly Rd (NB)

	Mon 8/4/25	Tue 8/5/25	Wed 8/6/25	Thur 8/7/25	Fri 8/8/25	Full Day Avg (Tue-Thur)
12-1 AM	0	9	8	10	11	9
1-2 AM	0	5	4	6	10	5
2-3AM	0	5	4	5	4	5
3-4AM	0	5	3	4	5	4
4-5AM	0	14	15	11	17	13
5-6AM	0	40	52	45	28	46
6-7AM	0	94	90	107	87	97
7-8AM	0	115	103	110	93	109
8-9AM	0	95	95	94	85	95
9-10AM	0	85	104	91	75	93
10-11AM	0	114	110	118	0	114
11-12PM	47	107	128	131	0	122
12-1PM	116	157	103	139	0	133
1-2PM	129	141	129	135	0	135
2-3PM	134	146	139	130	0	138
3-4PM	167	163	148	163	0	158
4-5PM	352	179	181	157	0	172
5-6PM	238	173	206	205	0	195
6-7PM	130	136	124	104	0	121
7-8PM	66	75	84	87	0	82
8-9PM	51	79	61	68	0	69
9-10PM	35	34	31	33	0	33
10-11PM	11	21	24	29	0	25
11-12AM	13	14	19	25	0	19
	1,489	2,006	1,965	2,007	415	1,993

- The average peak volume is 195 vehicles occurring between 5-6PM
- The highest recorded peak volume was 352 vehicles on Mon between 4-5PM
- The Average Daily Traffic Volume is 1,993

Daily Traffic Profile at NH 127 (Maple St) N. of Dolly Rd (NB)



US 202/NH 9 (Main St) E. of NH 103

Vehicle Class	Mon 7/14/2025	Tue 7/15/2025	Wed 7/16/2025	Thur 7/17/2025	Fri 7/18/2025	Full Day Avg (Tue-Thur)
1	40	102	79	59	18	80
<i>Motorcycles</i>	1.0%	1.7%	1.3%	1.0%	1.3%	1.3%
2	2,965	4,514	4,610	4,473	984	4,532
<i>Passenger Cars</i>	75.9%	74.8%	75.5%	75.3%	69.9%	75.2%
3	779	1,201	1,180	1,170	334	1,184
<i>Pickups/Vans</i>	19.9%	19.9%	19.3%	19.7%	23.7%	19.6%
4	4	13	21	11	2	15
<i>Buses</i>	0.1%	0.2%	0.3%	0.2%	0.1%	0.2%
5	90	132	129	142	43	134
<i>Single-Unit, 2-Axel</i>	2.3%	2.2%	2.1%	2.4%	3.1%	2.2%
6	5	24	16	30	15	23
<i>Single-Unit, 3-Axel</i>	0.1%	0.4%	0.3%	0.5%	1.1%	0.4%
7	1	3	3	3	1	3
<i>Single-Unit, 4+ Axel</i>	0.0%	0.0%	0.0%	0.1%	0.1%	0.0%
8	14	28	42	35	8	35
<i>Single Trailer, 3/4 Axel</i>	0.4%	0.5%	0.7%	0.6%	0.6%	0.6%
9	6	13	19	11	1	14
<i>Single Trailer, 5-Axel</i>	0.2%	0.2%	0.3%	0.2%	0.1%	0.2%
10	2	2	6	5	2	4
<i>Single Trailer, 6+ Axel</i>	0.1%	0.0%	0.1%	0.1%	0.1%	0.1%
11	0	0	0	0	0	0
<i>Multi-Trailer, 5 or less Axel</i>	0.0%	0.0%	0.0%	0.0%	0.0%	0.0%
12	0	0	0	0	0	0
<i>Multi-Trailer, 6-Axel</i>	0.0%	0.0%	0.0%	0.0%	0.0%	0.0%
13	0	0	0	0	0	0
<i>Multi-Trailer, 7+ Axel</i>	0.0%	0.0%	0.0%	0.0%	0.0%	0.0%
Day Total	3,906	6,032	6,105	5,939	1,408	6,025

US 202/NH 9 (Main St) E. of NH 103

Speed (mph)	Mon 7/14/2025	Tue 7/15/2025	Wed 7/16/2025	Thur 7/17/2025	Fri 7/18/2025	Full Day Avg (Tue-Thur)
0-25	2,131 54.6%	2,712 45.0%	2,430 39.8%	3,157 53.2%	762 54.1%	2,766 45.9%
26-30	1,360 34.8%	2,424 40.2%	2,577 42.2%	2,134 35.9%	510 36.2%	2,378 39.5%
31-35	336 8.6%	725 12.0%	827 13.5%	519 8.7%	124 8.8%	690 11.5%
36-40	67 1.7%	150 2.5%	211 3.5%	102 1.7%	10 0.7%	154 2.6%
41-45	11 0.3%	20 0.3%	48 0.8%	24 0.4%	1 0.1%	31 0.5%
46-50	1 0.0%	1 0.0%	12 0.2%	3 0.1%	1 0.1%	5 0.1%
51-55	0 0.0%	0 0.0%	0 0.0%	0 0.0%	0 0.0%	0 0.0%
56-60	0 0.0%	0 0.0%	0 0.0%	0 0.0%	0 0.0%	0 0.0%
61-65	0 0.0%	0 0.0%	0 0.0%	0 0.0%	0 0.0%	0 0.0%
66-70	0 0.0%	0 0.0%	0 0.0%	0 0.0%	0 0.0%	0 0.0%
71-75	0 0.0%	0 0.0%	0 0.0%	0 0.0%	0 0.0%	0 0.0%
75+	0 0.0%	0 0.0%	0 0.0%	0 0.0%	0 0.0%	0 0.0%
Day Total	3,906	6,032	6,105	5,939	1,408	6,025

Tuesday 7/15/2025 at US 202/NH 9 (Main St) E. of NH 103

Vehicle Class both directions

	1	2	3	4	5	6	7	8	9	10	11	12	13
12-1 AM	0	9	1	0	0	0	0	0	0	0	0	0	0
1-2 AM	0	8	0	0	1	0	0	0	0	0	0	0	0
2-3AM	0	3	1	0	0	0	0	0	0	0	0	0	0
3-4AM	1	6	2	0	0	0	0	0	0	0	0	0	0
4-5AM	0	19	9	0	0	0	0	0	0	1	0	0	0
5-6AM	1	50	29	0	4	0	0	0	0	0	0	0	0
6-7AM	4	157	63	2	9	3	0	0	0	0	0	0	0
7-8AM	6	325	81	1	11	1	0	2	2	0	0	0	0
8-9AM	4	316	84	3	20	1	1	3	1	0	0	0	0
9-10AM	3	260	82	0	5	1	1	2	0	0	0	0	0
10-11AM	4	263	89	0	11	3	0	2	0	0	0	0	0
11-12PM	6	266	70	2	12	1	0	3	0	1	0	0	0
12-1PM	5	298	78	1	7	6	1	2	1	0	0	0	0
1-2PM	4	266	76	2	9	4	0	1	3	0	0	0	0
2-3PM	13	292	104	0	13	2	0	1	2	0	0	0	0
3-4PM	5	380	93	0	9	0	0	3	2	0	0	0	0
4-5PM	3	457	101	0	9	1	0	1	1	0	0	0	0
5-6PM	11	412	81	1	5	1	0	4	1	0	0	0	0
6-7PM	16	246	66	0	2	0	0	0	0	0	0	0	0
7-8PM	8	191	30	1	4	0	0	2	0	0	0	0	0
8-9PM	3	145	29	0	1	0	0	1	0	0	0	0	0
9-10PM	2	90	21	0	0	0	0	1	0	0	0	0	0
10-11PM	1	37	4	0	0	0	0	0	0	0	0	0	0
11-12AM	2	18	7	0	0	0	0	0	0	0	0	0	0
Total	102	4,514	1,201	13	132	24	3	28	13	2	0	0	0
% of Daily Traffic	1.7%	74.8%	19.9%	0.2%	2.2%	0.4%	0.0%	0.5%	0.2%	0.0%	0.0%	0.0%	0.0%

Wednesday 7/16/2025 at US 202/NH 9 (Main St) E. of NH 103

Vehicle Class both directions

	1	2	3	4	5	6	7	8	9	10	11	12	13
12-1 AM	1	11	4	0	0	0	0	0	0	0	0	0	0
1-2 AM	0	12	2	0	0	0	0	0	0	0	0	0	0
2-3AM	0	6	0	0	1	0	0	0	0	0	0	0	0
3-4AM	0	6	3	0	0	0	0	0	0	0	0	0	0
4-5AM	0	13	9	0	0	0	0	0	0	1	0	0	0
5-6AM	2	56	28	0	1	0	0	2	0	2	0	0	0
6-7AM	1	126	62	1	5	0	0	2	1	0	0	0	0
7-8AM	4	312	94	0	13	2	2	2	2	1	0	0	0
8-9AM	4	369	95	5	14	1	0	3	0	1	0	0	0
9-10AM	2	234	64	0	12	1	0	5	1	0	0	0	0
10-11AM	3	264	69	1	11	0	0	4	2	0	0	0	0
11-12PM	7	288	73	1	11	1	0	9	2	0	0	0	0
12-1PM	13	336	94	2	11	2	1	2	0	0	0	0	0
1-2PM	4	303	65	2	3	2	0	1	3	0	0	0	0
2-3PM	2	293	78	2	11	2	0	3	3	0	0	0	0
3-4PM	6	366	82	3	6	2	0	6	2	0	0	0	0
4-5PM	4	427	107	2	11	2	0	3	2	1	0	0	0
5-6PM	4	392	110	2	11	0	0	0	1	0	0	0	0
6-7PM	6	255	52	0	3	0	0	0	0	0	0	0	0
7-8PM	4	216	40	0	4	1	0	0	0	0	0	0	0
8-9PM	6	164	28	0	1	0	0	0	0	0	0	0	0
9-10PM	3	95	16	0	0	0	0	0	0	0	0	0	0
10-11PM	1	43	4	0	0	0	0	0	0	0	0	0	0
11-12AM	2	23	1	0	0	0	0	0	0	0	0	0	0
Total	79	4,610	1,180	21	129	16	3	42	19	6	0	0	0
% of Daily Traffic	1.3%	75.5%	19.3%	0.3%	2.1%	0.3%	0.0%	0.7%	0.3%	0.1%	0.0%	0.0%	0.0%

Thursday 7/17/2025 at US 202/NH 9 (Main St) E. of NH 103

Vehicle Class both directions

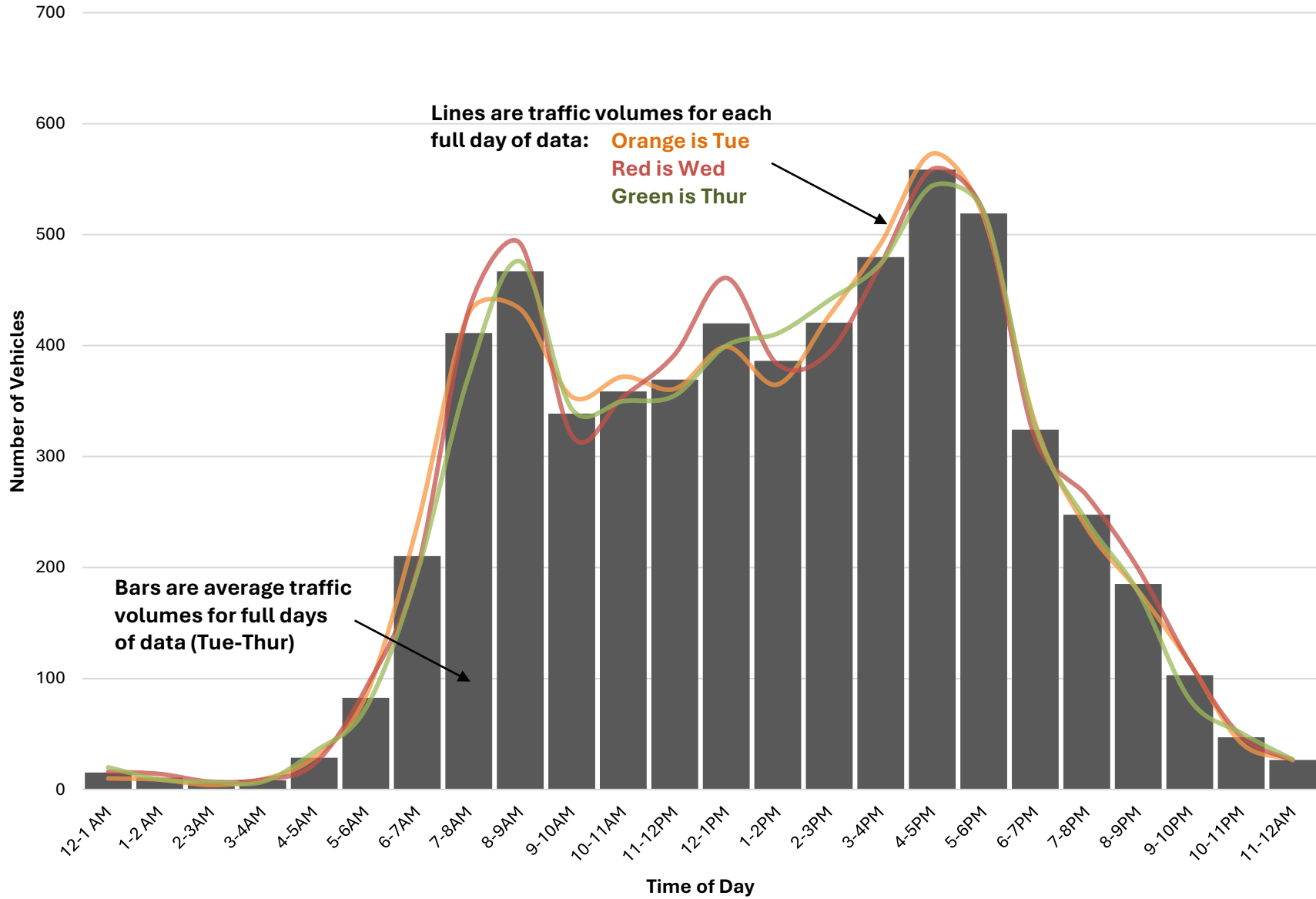
	1	2	3	4	5	6	7	8	9	10	11	12	13
12-1 AM	0	16	3	0	1	0	0	0	0	0	0	0	0
1-2 AM	1	8	0	0	0	0	0	0	0	0	0	0	0
2-3AM	0	4	3	0	0	0	0	0	0	0	0	0	0
3-4AM	0	4	2	0	1	0	0	0	0	0	0	0	0
4-5AM	0	26	6	0	1	0	0	0	1	0	0	0	0
5-6AM	2	37	29	0	3	1	0	0	0	1	0	0	0
6-7AM	0	129	54	1	5	1	0	3	1	1	0	0	0
7-8AM	1	269	81	0	11	5	0	4	1	1	0	0	0
8-9AM	0	364	94	2	11	2	0	2	0	1	0	0	0
9-10AM	0	254	64	0	14	3	2	2	3	1	0	0	0
10-11AM	6	248	78	0	11	6	0	1	0	0	0	0	0
11-12PM	3	252	81	0	11	3	1	3	1	0	0	0	0
12-1PM	5	297	86	1	9	1	0	0	1	0	0	0	0
1-2PM	6	307	81	1	9	3	0	4	0	0	0	0	0
2-3PM	12	314	83	0	22	2	0	6	2	0	0	0	0
3-4PM	3	346	111	3	7	1	0	3	0	0	0	0	0
4-5PM	6	432	88	1	13	1	0	3	0	0	0	0	0
5-6PM	5	410	91	0	10	1	0	3	1	0	0	0	0
6-7PM	2	273	51	0	0	0	0	1	0	0	0	0	0
7-8PM	5	205	28	1	3	0	0	0	0	0	0	0	0
8-9PM	0	137	41	0	0	0	0	0	0	0	0	0	0
9-10PM	1	71	8	1	0	0	0	0	0	0	0	0	0
10-11PM	1	46	4	0	0	0	0	0	0	0	0	0	0
11-12AM	0	24	3	0	0	0	0	0	0	0	0	0	0
Total	59	4,473	1,170	11	142	30	3	35	11	5	0	0	0
% of Daily Traffic	1.0%	75.3%	19.7%	0.2%	2.4%	0.5%	0.1%	0.6%	0.2%	0.1%	0.0%	0.0%	0.0%

US 202/NH 9 (Main St) E. of NH 103 (both ways)

	Mon 7/14/25	Tue 7/15/25	Wed 7/16/25	Thur 7/17/25	Fri 7/18/25	Full Day Avg (Tue-Thur)
12-1 AM	0	10	16	20	13	15
1-2 AM	0	9	14	9	15	11
2-3AM	0	4	7	7	9	6
3-4AM	0	9	9	7	9	8
4-5AM	0	29	23	34	24	29
5-6AM	0	84	91	73	76	83
6-7AM	0	238	198	195	174	210
7-8AM	0	429	432	373	334	411
8-9AM	0	433	492	476	404	467
9-10AM	0	354	319	343	350	339
10-11AM	20	372	354	350	0	359
11-12PM	374	361	392	355	0	369
12-1PM	405	399	461	400	0	420
1-2PM	381	365	383	411	0	386
2-3PM	398	427	394	441	0	421
3-4PM	511	492	473	474	0	480
4-5PM	538	573	559	544	0	559
5-6PM	531	516	520	521	0	519
6-7PM	264	330	316	327	0	324
7-8PM	215	236	265	242	0	248
8-9PM	145	179	199	178	0	185
9-10PM	78	114	114	81	0	103
10-11PM	34	42	48	51	0	47
11-12AM	12	27	26	27	0	27
	3,906	6,032	6,105	5,939	1,408	6,025

- The average peak volume is 559 vehicles occurring between 4-5PM
- The highest recorded peak volume was 573 vehicles on Tue between 4-5PM
- The Average Daily Traffic Volume is 6,025

Daily Traffic Profile at US 202/NH 9 (Main St) E. of NH 103 (both ways)

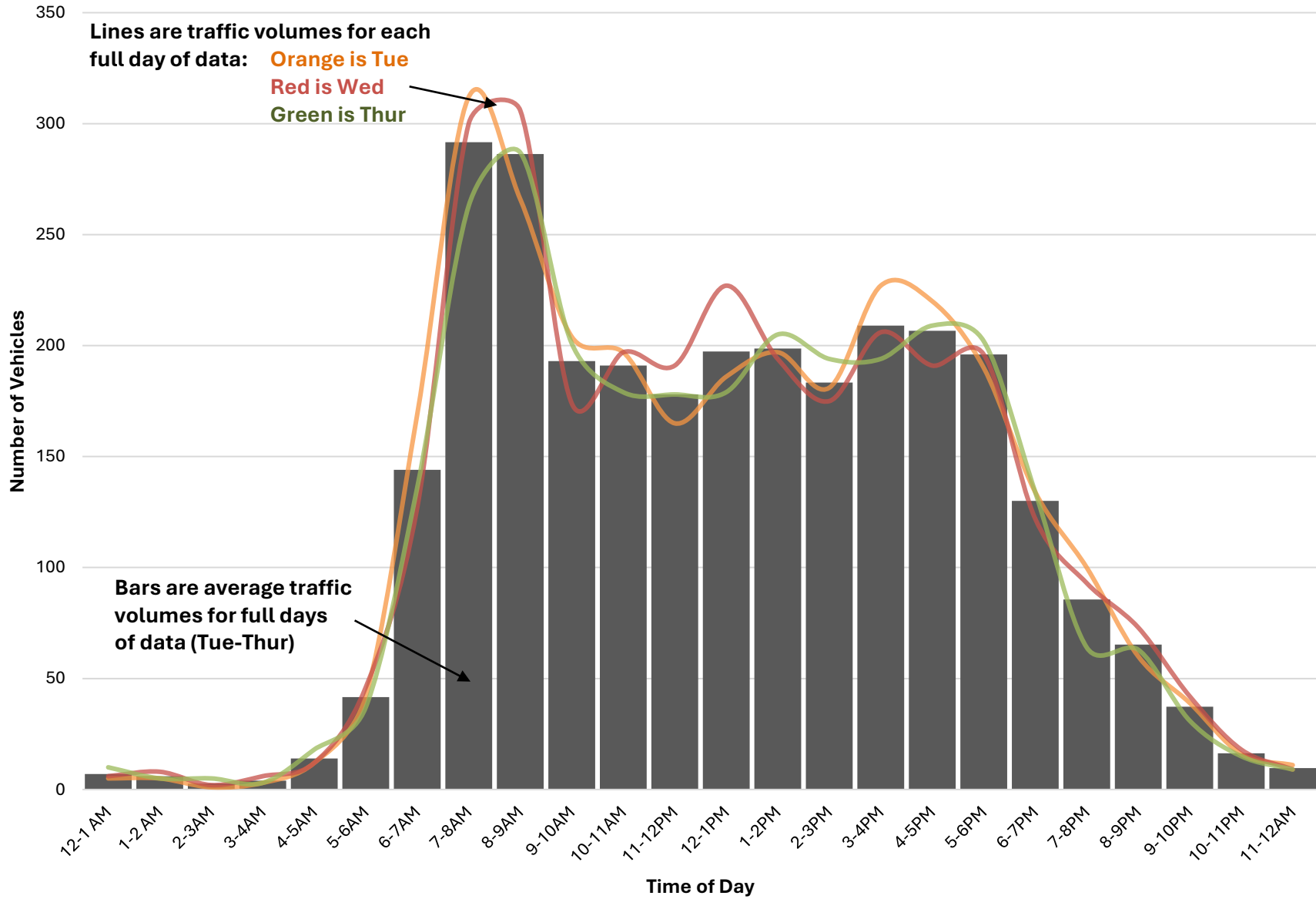


US 202/NH 9 (Main St) E. of NH 103 (EB)

	Mon 7/14/25	Tue 7/15/25	Wed 7/16/25	Thur 7/17/25	Fri 7/18/25	Full Day Avg (Tue-Thur)
12-1 AM	0	5	6	10	4	7
1-2 AM	0	5	8	5	5	6
2-3AM	0	1	2	5	4	3
3-4AM	0	3	6	3	5	4
4-5AM	0	12	12	18	16	14
5-6AM	0	42	46	37	39	42
6-7AM	0	169	127	136	115	144
7-8AM	0	312	300	263	223	292
8-9AM	0	266	306	287	249	286
9-10AM	0	204	174	201	196	193
10-11AM	15	197	197	179	0	191
11-12PM	205	165	191	178	0	178
12-1PM	172	186	227	179	0	197
1-2PM	201	197	194	205	0	199
2-3PM	179	181	175	194	0	183
3-4PM	241	227	206	194	0	209
4-5PM	203	220	191	209	0	207
5-6PM	187	190	196	202	0	196
6-7PM	128	134	122	134	0	130
7-8PM	55	100	93	64	0	86
8-9PM	41	60	73	63	0	65
9-10PM	31	39	42	31	0	37
10-11PM	9	16	18	15	0	16
11-12AM	7	11	9	9	0	10
	1,674	2,942	2,921	2,821	856	2,895

- The average peak volume is 292 vehicles occurring between 7-8AM
- The highest recorded peak volume was 312 vehicles on Tue between 7-8AM
- The Average Daily Traffic Volume is 2,895

Daily Traffic Profile at US202/NH 9 (Main St) E. of NH 103 (EB)



US 202/NH 9 (Main St) E. of NH 103 (WB)

	Mon 7/14/25	Tue 7/15/25	Wed 7/16/25	Thur 7/17/25	Fri 7/18/25	Full Day Avg (Tue-Thur)
12-1 AM	0	5	10	10	9	8
1-2 AM	0	4	6	4	10	5
2-3AM	0	3	5	2	5	3
3-4AM	0	6	3	4	4	4
4-5AM	0	17	11	16	8	15
5-6AM	0	42	45	36	37	41
6-7AM	0	69	71	59	59	66
7-8AM	0	117	132	110	111	120
8-9AM	0	167	186	189	155	181
9-10AM	0	150	145	142	154	146
10-11AM	5	175	157	171	0	168
11-12PM	169	196	201	177	0	191
12-1PM	233	213	234	221	0	223
1-2PM	180	168	189	206	0	188
2-3PM	219	246	219	247	0	237
3-4PM	270	265	267	280	0	271
4-5PM	335	353	368	335	0	352
5-6PM	344	326	324	319	0	323
6-7PM	136	196	194	193	0	194
7-8PM	160	136	172	178	0	162
8-9PM	104	119	126	115	0	120
9-10PM	47	75	72	50	0	66
10-11PM	25	26	30	36	0	31
11-12AM	5	16	17	18	0	17
	2,232	3,090	3,184	3,118	552	3,131

- The average peak volume is 352 vehicles occurring between 4-5PM
- The highest recorded peak volume was 368 vehicles on Wed between 4-5PM
- The Average Daily Traffic Volume is 3,131

Daily Traffic Profile at US 202/NH 9 (Main St) E. of NH 103 (WB)

