

Main St over Sanders Brook

Vehicle Class	Mon 8/11/2025	Tue 8/12/2025	Wed 8/13/2025	Thur 8/14/2025	Fri 8/15/2025	Full Day Avg (Tue-Thur)
1	43	67	42	53	13	54
<i>Motorcycles</i>	0.8%	0.9%	0.5%	0.7%	0.8%	0.7%
2	4,033	5,318	5,510	5,535	1,036	5,454
<i>Passenger Cars</i>	71.7%	71.4%	71.4%	71.8%	66.2%	71.6%
3	1,403	1,874	1,970	1,919	459	1,921
<i>Pickups/Vans</i>	24.9%	25.2%	25.5%	24.9%	29.3%	25.2%
4	6	1	2	5	0	3
<i>Buses</i>	0.1%	0.0%	0.0%	0.1%	0.0%	0.0%
5	106	150	145	140	43	145
<i>Single-Unit, 2-Axel</i>	1.9%	2.0%	1.9%	1.8%	2.7%	1.9%
6	7	13	19	23	8	18
<i>Single-Unit, 3-Axel</i>	0.1%	0.2%	0.2%	0.3%	0.5%	0.2%
7	0	1	2	1	1	1
<i>Single-Unit, 4+ Axel</i>	0.0%	0.0%	0.0%	0.0%	0.1%	0.0%
8	15	12	15	10	5	12
<i>Single Trailer, 3/4 Axel</i>	0.3%	0.2%	0.2%	0.1%	0.3%	0.2%
9	12	11	10	17	1	13
<i>Single Trailer, 5-Axel</i>	0.2%	0.1%	0.1%	0.2%	0.1%	0.2%
10	2	0	0	2	0	1
<i>Single Trailer, 6+ Axel</i>	0.0%	0.0%	0.0%	0.0%	0.0%	0.0%
11	0	0	0	0	0	0
<i>Multi-Trailer, 5 or less Axel</i>	0.0%	0.0%	0.0%	0.0%	0.0%	0.0%
12	0	0	0	0	0	0
<i>Multi-Trailer, 6-Axel</i>	0.0%	0.0%	0.0%	0.0%	0.0%	0.0%
13	0	0	0	0	0	0
<i>Multi-Trailer, 7+ Axel</i>	0.0%	0.0%	0.0%	0.0%	0.0%	0.0%
Day Total	5,627	7,447	7,715	7,705	1,566	7,622

Main St over Sanders Brook

Speed (mph)	Mon 8/11/2025	Tue 8/12/2025	Wed 8/13/2025	Thur 8/14/2025	Fri 8/15/2025	Full Day Avg (Tue-Thur)
0-25	95 1.7%	88 1.2%	47 0.6%	61 0.8%	11 0.7%	65 0.9%
26-30	308 5.5%	307 4.1%	405 5.2%	355 4.6%	37 2.4%	356 4.7%
31-35	1,863 33.1%	2,095 28.1%	2,322 30.1%	2,232 29.0%	298 19.0%	2,216 29.1%
36-40	3,015 53.6%	4,288 57.6%	4,268 55.3%	4,428 57.5%	1,007 64.3%	4,328 56.8%
41-45	320 5.7%	637 8.6%	646 8.4%	595 7.7%	200 12.8%	626 8.2%
46-50	19 0.3%	28 0.4%	25 0.3%	29 0.4%	11 0.7%	27 0.4%
51-55	7 0.1%	2 0.0%	2 0.0%	2 0.0%	1 0.1%	2 0.0%
56-60	0 0.0%	2 0.0%	0 0.0%	2 0.0%	0 0.0%	1 0.0%
61-65	0 0.0%	0 0.0%	0 0.0%	0 0.0%	1 0.1%	0 0.0%
66-70	0 0.0%	0 0.0%	0 0.0%	1 0.0%	0 0.0%	0 0.0%
71-75	0 0.0%	0 0.0%	0 0.0%	0 0.0%	0 0.0%	0 0.0%
75+	0 0.0%	0 0.0%	0 0.0%	0 0.0%	0 0.0%	0 0.0%
Day Total	5,627	7,447	7,715	7,705	1,566	7,622

Tuesday 8/12/25 at Main St over Sanders Brook

Vehicle Class both directions

	1	2	3	4	5	6	7	8	9	10	11	12	13
12-1 AM	1	18	5	0	0	0	0	0	0	0	0	0	0
1-2 AM	0	12	3	0	0	0	0	0	0	0	0	0	0
2-3AM	1	13	2	0	0	1	0	0	0	0	0	0	0
3-4AM	0	22	5	1	1	0	0	0	0	0	0	0	0
4-5AM	3	54	26	0	1	0	0	0	0	0	0	0	0
5-6AM	2	134	83	0	9	0	0	0	2	0	0	0	0
6-7AM	7	287	158	0	17	2	0	1	0	0	0	0	0
7-8AM	3	462	154	0	10	0	0	1	0	0	0	0	0
8-9AM	1	350	143	0	15	0	0	2	0	0	0	0	0
9-10AM	2	323	97	0	7	1	0	2	1	0	0	0	0
10-11AM	0	282	77	0	6	1	1	0	2	0	0	0	0
11-12PM	1	294	88	0	15	2	0	1	0	0	0	0	0
12-1PM	3	298	105	0	6	1	0	1	0	0	0	0	0
1-2PM	7	303	113	0	8	3	0	0	1	0	0	0	0
2-3PM	4	326	151	0	15	0	0	0	2	0	0	0	0
3-4PM	3	414	143	0	11	0	0	1	1	0	0	0	0
4-5PM	5	425	147	0	12	1	0	2	1	0	0	0	0
5-6PM	9	445	133	0	6	0	0	0	0	0	0	0	0
6-7PM	6	295	90	0	3	1	0	0	0	0	0	0	0
7-8PM	6	201	70	0	4	0	0	1	1	0	0	0	0
8-9PM	2	154	37	0	1	0	0	0	0	0	0	0	0
9-10PM	1	101	18	0	1	0	0	0	0	0	0	0	0
10-11PM	0	55	11	0	1	0	0	0	0	0	0	0	0
11-12AM	0	50	15	0	1	0	0	0	0	0	0	0	0
Total	67	5,318	1,874	1	150	13	1	12	11	0	0	0	0
% of Daily Traffic	0.9%	71.4%	25.2%	0.0%	2.0%	0.2%	0.0%	0.2%	0.1%	0.0%	0.0%	0.0%	0.0%

Wednesday 8/13/25 at Main St over Sanders Brook

Vehicle Class both directions

	1	2	3	4	5	6	7	8	9	10	11	12	13
12-1 AM	0	18	3	0	1	0	0	0	0	0	0	0	0
1-2 AM	1	13	3	0	0	0	0	0	0	0	0	0	0
2-3AM	0	12	2	0	0	0	0	0	0	0	0	0	0
3-4AM	0	26	6	0	1	0	0	0	0	0	0	0	0
4-5AM	1	56	27	0	1	0	0	0	0	0	0	0	0
5-6AM	1	127	88	0	8	0	0	0	0	0	0	0	0
6-7AM	5	257	165	0	20	0	0	2	0	0	0	0	0
7-8AM	5	483	163	0	7	1	0	1	3	0	0	0	0
8-9AM	1	385	143	0	13	2	0	2	0	0	0	0	0
9-10AM	1	297	105	1	3	2	0	0	1	0	0	0	0
10-11AM	1	328	112	0	9	1	2	0	0	0	0	0	0
11-12PM	2	321	117	0	8	3	0	1	1	0	0	0	0
12-1PM	2	320	102	1	13	2	0	0	2	0	0	0	0
1-2PM	4	296	117	0	9	2	0	1	1	0	0	0	0
2-3PM	3	390	134	0	6	3	0	2	0	0	0	0	0
3-4PM	4	402	163	0	22	0	0	2	0	0	0	0	0
4-5PM	4	487	150	0	11	1	0	1	1	0	0	0	0
5-6PM	3	441	145	0	6	2	0	1	0	0	0	0	0
6-7PM	1	330	84	0	3	0	0	0	1	0	0	0	0
7-8PM	1	191	53	0	2	0	0	2	0	0	0	0	0
8-9PM	0	143	30	0	0	0	0	0	0	0	0	0	0
9-10PM	1	100	31	0	2	0	0	0	0	0	0	0	0
10-11PM	1	58	11	0	0	0	0	0	0	0	0	0	0
11-12AM	0	29	16	0	0	0	0	0	0	0	0	0	0
Total	42	5,510	1,970	2	145	19	2	15	10	0	0	0	0
% of Daily Traffic	0.5%	71.4%	25.5%	0.0%	1.9%	0.2%	0.0%	0.2%	0.1%	0.0%	0.0%	0.0%	0.0%

Thursday 8/14/25 at Main St over Sanders Brook

Vehicle Class both directions

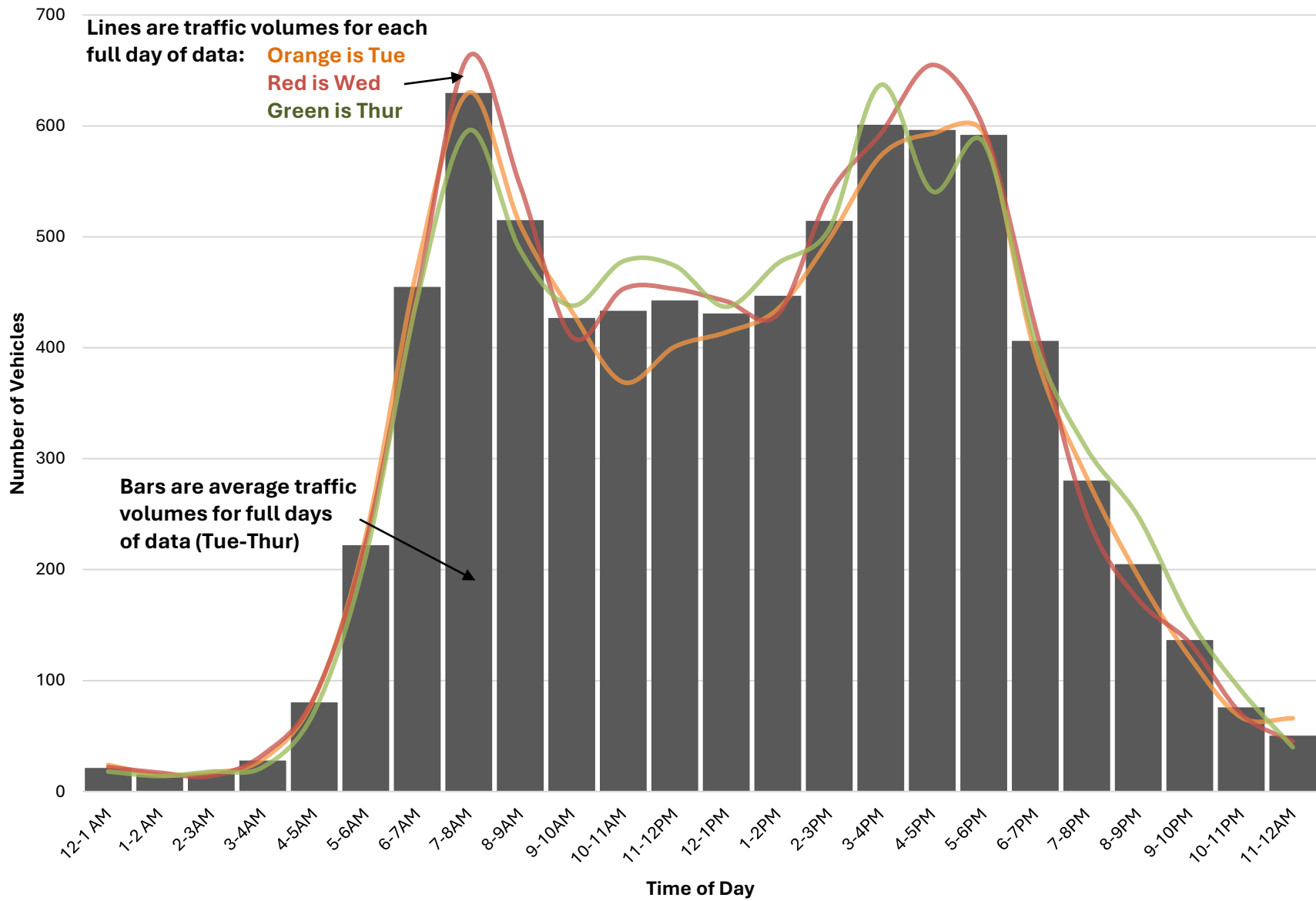
	1	2	3	4	5	6	7	8	9	10	11	12	13
12-1 AM	0	14	4	0	0	0	0	0	0	0	0	0	0
1-2 AM	0	12	2	0	0	0	0	0	0	0	0	0	0
2-3AM	0	12	4	0	0	1	0	0	1	0	0	0	0
3-4AM	0	20	1	0	0	0	0	1	0	0	0	0	0
4-5AM	0	51	19	0	1	0	0	0	1	0	0	0	0
5-6AM	0	120	81	0	8	0	0	0	3	0	0	0	0
6-7AM	3	264	161	0	15	0	0	0	0	1	0	0	0
7-8AM	3	420	156	0	15	0	0	1	1	0	0	0	0
8-9AM	2	353	112	0	14	3	1	1	1	1	0	0	0
9-10AM	2	310	114	0	9	2	0	0	1	0	0	0	0
10-11AM	4	348	114	0	6	3	0	1	2	0	0	0	0
11-12PM	1	333	124	0	13	1	0	1	1	0	0	0	0
12-1PM	0	311	109	0	11	4	0	0	2	0	0	0	0
1-2PM	4	341	118	2	8	1	0	1	1	0	0	0	0
2-3PM	2	367	129	0	4	4	0	0	1	0	0	0	0
3-4PM	5	445	170	0	11	3	0	2	1	0	0	0	0
4-5PM	2	408	118	1	10	1	0	0	1	0	0	0	0
5-6PM	7	448	126	0	2	0	0	2	0	0	0	0	0
6-7PM	5	309	84	0	7	0	0	0	0	0	0	0	0
7-8PM	7	235	65	0	2	0	0	0	0	0	0	0	0
8-9PM	3	191	50	2	2	0	0	0	0	0	0	0	0
9-10PM	1	117	37	0	0	0	0	0	0	0	0	0	0
10-11PM	1	75	15	0	0	0	0	0	0	0	0	0	0
11-12AM	1	31	6	0	2	0	0	0	0	0	0	0	0
Total	53	5,535	1,919	5	140	23	1	10	17	2	0	0	0
% of Daily Traffic	0.7%	71.8%	24.9%	0.1%	1.8%	0.3%	0.0%	0.1%	0.2%	0.0%	0.0%	0.0%	0.0%

Main St over Sanders Brook (both ways)

	Mon 8/11/25	Tue 8/12/25	Wed 8/13/25	Thur 8/14/25	Fri 8/15/25	Full Day Avg (Tue-Thur)
12-1 AM	0	24	22	18	19	21
1-2 AM	0	15	17	14	15	15
2-3AM	0	17	14	18	15	16
3-4AM	0	29	33	22	25	28
4-5AM	0	84	85	72	72	80
5-6AM	0	230	224	212	178	222
6-7AM	0	472	449	444	378	455
7-8AM	0	630	663	596	531	630
8-9AM	11	511	546	488	333	515
9-10AM	481	433	410	438	0	427
10-11AM	433	369	453	478	0	433
11-12PM	482	401	453	474	0	443
12-1PM	437	414	442	437	0	431
1-2PM	460	435	430	476	0	447
2-3PM	527	498	538	507	0	514
3-4PM	598	573	593	637	0	601
4-5PM	584	593	655	541	0	596
5-6PM	581	593	598	585	0	592
6-7PM	384	395	419	405	0	406
7-8PM	256	283	249	309	0	280
8-9PM	186	194	173	248	0	205
9-10PM	112	121	134	155	0	137
10-11PM	59	67	70	91	0	76
11-12AM	36	66	45	40	0	50
	5,627	7,447	7,715	7,705	1,566	7,622

- The average peak volume is 630 vehicles occurring between 7-8AM
- The highest recorded peak volume was 663 vehicles on Wed between 7-8AM
- The Average Daily Traffic Volume is 7,622

Daily Traffic Profile at Main St over Sanders Brook (both ways)

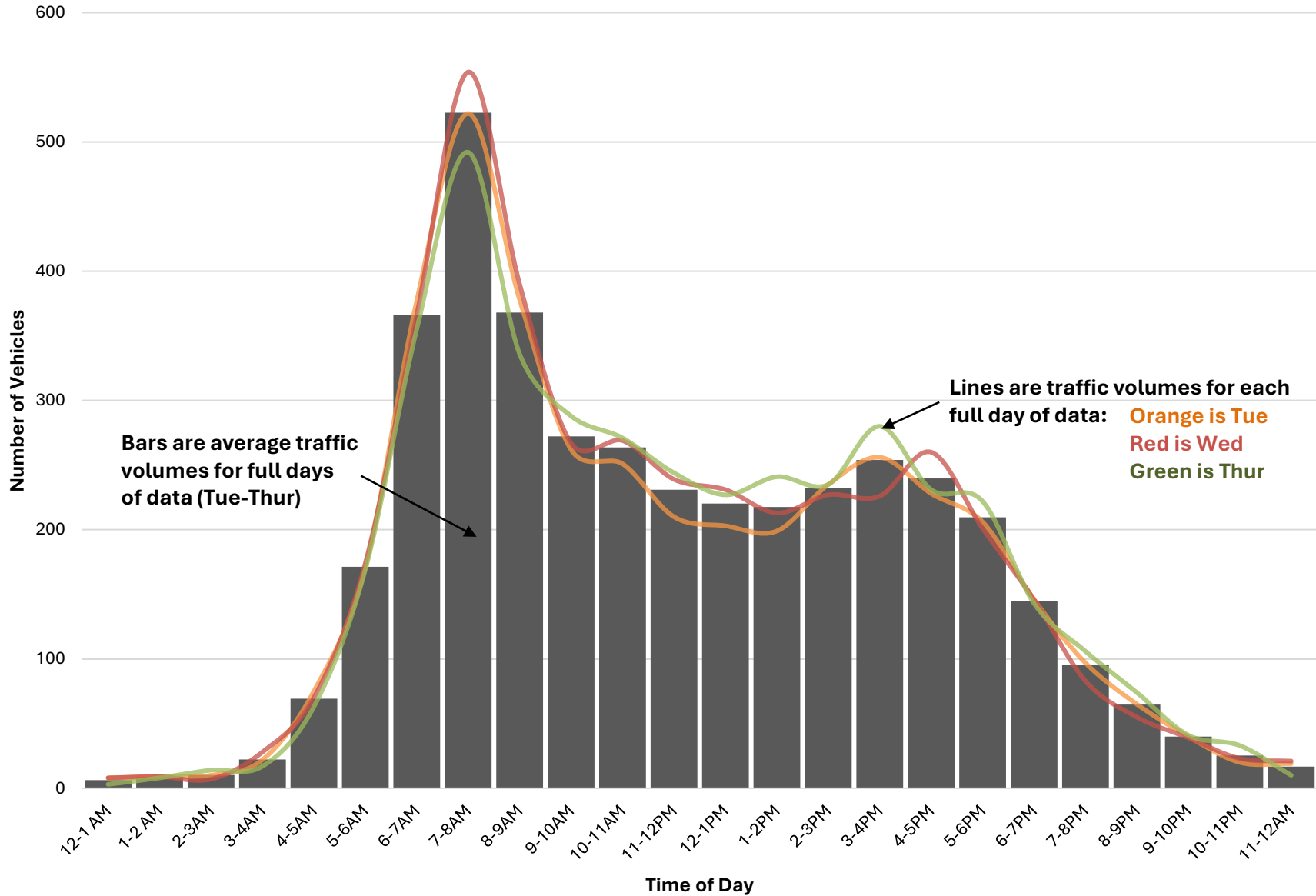


Main St over Sanders Brook (SB)

	Mon 8/11/25	Tue 8/12/25	Wed 8/13/25	Thur 8/14/25	Fri 8/15/25	Full Day Avg (Tue-Thur)
12-1 AM	0	8	8	3	5	6
1-2 AM	0	9	9	8	7	9
2-3AM	0	10	7	14	9	10
3-4AM	0	22	28	17	23	22
4-5AM	0	75	70	63	58	69
5-6AM	0	171	174	169	129	171
6-7AM	0	377	366	355	305	366
7-8AM	0	522	554	492	425	523
8-9AM	8	378	390	336	236	368
9-10AM	317	262	267	288	0	272
10-11AM	267	251	269	271	0	264
11-12PM	259	210	239	244	0	231
12-1PM	236	203	231	227	0	220
1-2PM	235	199	213	241	0	218
2-3PM	268	235	227	235	0	232
3-4PM	248	256	226	280	0	254
4-5PM	219	228	260	231	0	240
5-6PM	208	206	201	222	0	210
6-7PM	132	146	146	143	0	145
7-8PM	100	97	83	106	0	95
8-9PM	67	65	55	74	0	65
9-10PM	31	40	39	41	0	40
10-11PM	18	20	23	33	0	25
11-12AM	9	19	21	10	0	17
	2,622	4,009	4,106	4,103	1,197	4,073

- The average peak volume is 523 vehicles occurring between 7-8AM
- The highest recorded peak volume was 554 vehicles on Wed between 7-8AM
- The Average Daily Traffic Volume is 4,073

Daily Traffic Profile at Main St over Sanders Brook (SB)

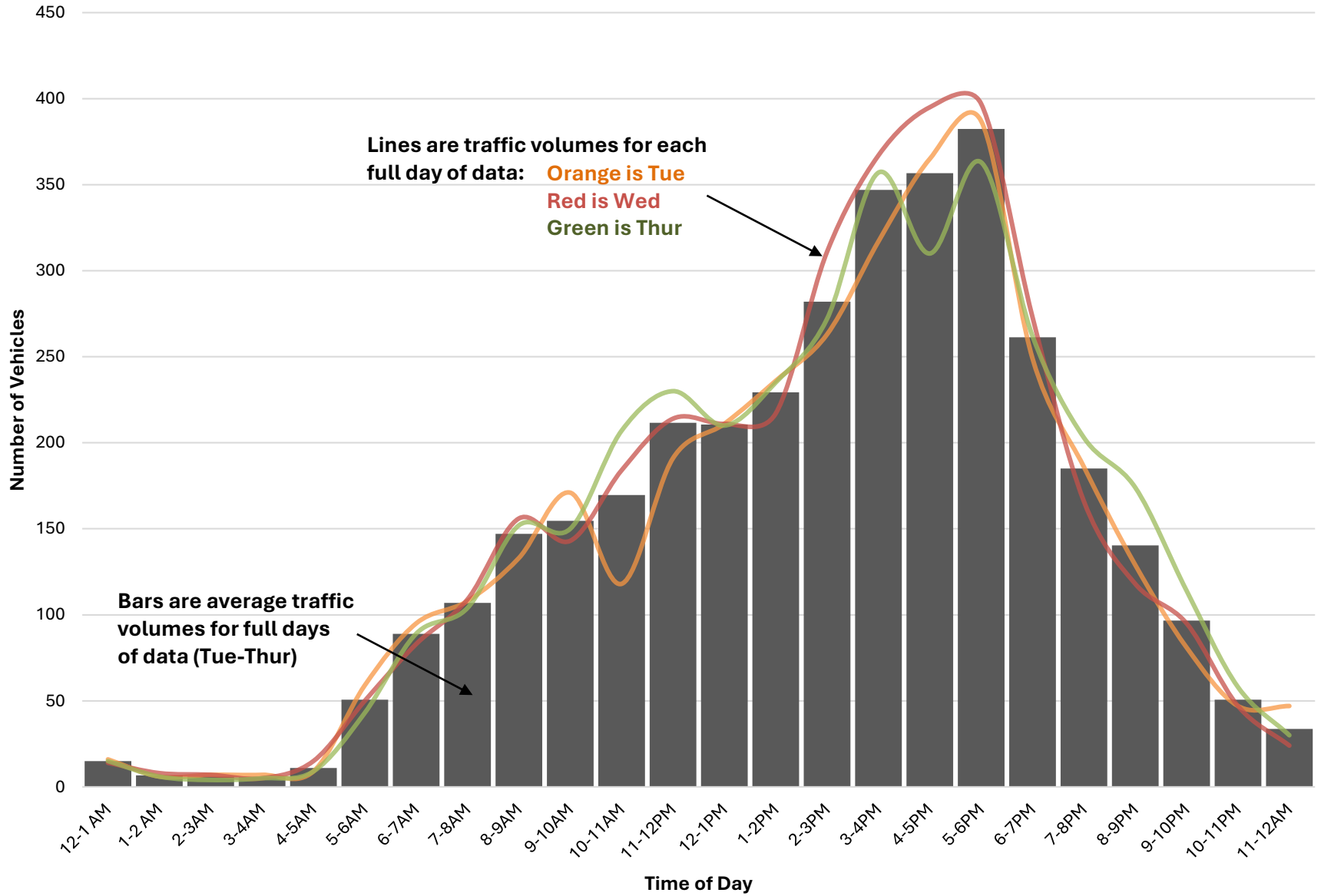


Main St over Sanders Brook (NB)

	Mon 8/11/25	Tue 8/12/25	Wed 8/13/25	Thur 8/14/25	Fri 8/15/25	Full Day Avg (Tue-Thur)
12-1 AM	0	16	14	15	14	15
1-2 AM	0	6	8	6	8	7
2-3AM	0	7	7	4	6	6
3-4AM	0	7	5	5	2	6
4-5AM	0	9	15	9	14	11
5-6AM	0	59	50	43	49	51
6-7AM	0	95	83	89	73	89
7-8AM	0	108	109	104	106	107
8-9AM	3	133	156	152	97	147
9-10AM	164	171	143	150	0	155
10-11AM	166	118	184	207	0	170
11-12PM	223	191	214	230	0	212
12-1PM	201	211	211	210	0	211
1-2PM	225	236	217	235	0	229
2-3PM	259	263	311	272	0	282
3-4PM	350	317	367	357	0	347
4-5PM	365	365	395	310	0	357
5-6PM	373	387	397	363	0	382
6-7PM	252	249	273	262	0	261
7-8PM	156	186	166	203	0	185
8-9PM	119	129	118	174	0	140
9-10PM	81	81	95	114	0	97
10-11PM	41	47	47	58	0	51
11-12AM	27	47	24	30	0	34
	3,005	3,438	3,609	3,602	369	3,550

- The average peak volume is 382 vehicles occurring between 5-6PM
- The highest recorded peak volume was 397 vehicles on Wed between 5-6PM
- The Average Daily Traffic Volume is 3,550

Daily Traffic Profile at Main St over Sanders Brook (NB)



NH 9 (Dover Rd) at Pembroke TL

Vehicle Class	Mon 5/12/2025	Tue 5/13/2025	Wed 5/14/2025	Thur 5/15/2025	Fri 5/16/2025	Full Day Avg (Tue-Thur)
1 <i>Motorcycles</i>	197 1.1%	213 0.8%	186 0.7%	62 0.2%	26 0.4%	154 0.6%
2 <i>Passenger Cars</i>	12,195 69.0%	17,530 68.0%	17,790 68.2%	17,739 68.7%	4,722 65.1%	17,686 68.3%
3 <i>Pickups/Vans</i>	4,354 24.6%	6,355 24.6%	6,405 24.6%	6,376 24.7%	1,944 26.8%	6,379 24.6%
4 <i>Buses</i>	37 0.2%	35 0.1%	46 0.2%	48 0.2%	14 0.2%	43 0.2%
5 <i>Single-Unit, 2-Axel</i>	338 1.9%	633 2.5%	634 2.4%	657 2.5%	222 3.1%	641 2.5%
6 <i>Single-Unit, 3-Axel</i>	164 0.9%	324 1.3%	308 1.2%	253 1.0%	81 1.1%	295 1.1%
7 <i>Single-Unit, 4+ Axel</i>	46 0.3%	85 0.3%	80 0.3%	65 0.3%	15 0.2%	77 0.3%
8 <i>Single Trailer, 3/4 Axel</i>	73 0.4%	118 0.5%	127 0.5%	144 0.6%	58 0.8%	130 0.5%
9 <i>Single Trailer, 5-Axel</i>	238 1.3%	390 1.5%	387 1.5%	364 1.4%	137 1.9%	380 1.5%
10 <i>Single Trailer, 6+ Axel</i>	36 0.2%	95 0.4%	106 0.4%	90 0.3%	32 0.4%	97 0.4%
11 <i>Multi-Trailer, 5 or less Axel</i>	3 0.0%	5 0.0%	0 0.0%	9 0.0%	3 0.0%	5 0.0%
12 <i>Multi-Trailer, 6-Axel</i>	0 0.0%	1 0.0%	0 0.0%	0 0.0%	1 0.0%	0 0.0%
13 <i>Multi-Trailer, 7+ Axel</i>	0 0.0%	0 0.0%	0 0.0%	0 0.0%	0 0.0%	0 0.0%
Day Total	17,681	25,784	26,069	25,807	7,255	25,887

NH 9 (Dover Rd) at Pembroke TL

Speed (mph)	Mon 5/12/2025	Tue 5/13/2025	Wed 5/14/2025	Thur 5/15/2025	Fri 5/16/2025	Full Day Avg (Tue-Thur)
0-25	559	142	464	988	5	531
	3.2%	0.6%	1.8%	3.8%	0.1%	2.1%
26-30	400	389	643	1,073	4	702
	2.3%	1.5%	2.5%	4.2%	0.1%	2.7%
31-35	391	435	544	669	16	549
	2.2%	1.7%	2.1%	2.6%	0.2%	2.1%
36-40	1,482	1,845	1,750	1,648	283	1,748
	8.4%	7.2%	6.7%	6.4%	3.9%	6.8%
41-45	4,100	5,719	5,487	5,168	1,229	5,458
	23.2%	22.2%	21.0%	20.0%	16.9%	21.1%
46-50	7,009	10,817	10,827	10,474	3,375	10,706
	39.6%	42.0%	41.5%	40.6%	46.5%	41.4%
51-55	3,322	5,595	5,527	5,124	2,004	5,415
	18.8%	21.7%	21.2%	19.9%	27.6%	20.9%
56-60	379	758	740	599	312	699
	2.1%	2.9%	2.8%	2.3%	4.3%	2.7%
61-65	34	72	81	59	26	71
	0.2%	0.3%	0.3%	0.2%	0.4%	0.3%
66-70	4	12	6	5	1	8
	0.0%	0.0%	0.0%	0.0%	0.0%	0.0%
71-75	0	0	0	0	0	0
	0.0%	0.0%	0.0%	0.0%	0.0%	0.0%
75+	1	0	0	0	0	0
	0.0%	0.0%	0.0%	0.0%	0.0%	0.0%
Day Total	17,681	25,784	26,069	25,807	7,255	25,887

Tuesday 5/13/2025 at NH 9 (Dover Rd) at Pembroke TL

	Speed (mph) both directions											
	0-25	26-30	31-35	36-40	41-45	46-50	51-55	56-60	61-65	66-70	71-75	75+
12-1 AM	0	0	0	9	12	23	8	1	1	1	0	0
1-2 AM	0	0	0	2	18	12	12	1	0	0	0	0
2-3AM	0	0	0	2	18	25	10	1	0	0	0	0
3-4AM	0	0	0	4	19	24	18	4	2	0	0	0
4-5AM	0	0	2	3	38	89	67	15	2	0	0	0
5-6AM	0	0	0	8	57	233	242	57	11	2	0	0
6-7AM	1	1	1	27	129	577	486	87	10	0	0	0
7-8AM	2	2	11	98	332	1,039	553	58	2	0	0	0
8-9AM	2	2	10	71	297	890	444	55	3	0	0	0
9-10AM	2	2	5	70	328	722	324	41	1	0	0	0
10-11AM	6	7	14	95	411	681	293	38	3	0	0	0
11-12PM	6	4	15	91	349	669	300	36	5	0	0	0
12-1PM	4	5	24	152	467	627	256	26	5	1	0	0
1-2PM	3	1	19	149	429	643	276	38	3	1	0	0
2-3PM	6	6	22	204	467	723	313	23	1	0	0	0
3-4PM	19	68	121	295	600	722	327	33	1	0	0	0
4-5PM	79	258	108	230	545	719	284	38	2	0	0	0
5-6PM	8	28	61	204	483	799	428	47	2	1	0	0
6-7PM	0	0	9	49	246	561	355	64	6	0	0	0
7-8PM	2	1	3	34	156	425	261	43	6	3	0	0
8-9PM	2	4	6	25	150	312	161	23	2	1	0	0
9-10PM	0	0	3	12	84	179	81	16	3	0	0	0
10-11PM	0	0	0	8	56	76	55	9	1	1	0	0
11-12AM	0	0	1	3	28	47	41	4	0	1	0	0
Total	142	389	435	1,845	5,719	10,817	5,595	758	72	12	0	0
% of Daily Traffic	0.6%	1.5%	1.7%	7.2%	22.2%	42.0%	21.7%	2.9%	0.3%	0.0%	0.0%	0.0%

Wednesday 5/14/2025 at NH 9 (Dover Rd) at Pembroke TL

Speed (mph) both directions

	0-25	26-30	31-35	36-40	41-45	46-50	51-55	56-60	61-65	66-70	71-75	75+
12-1 AM	0	0	0	3	20	23	16	2	0	0	0	0
1-2 AM	0	0	0	0	12	21	4	2	1	0	0	0
2-3AM	0	1	2	3	21	19	9	0	1	0	0	0
3-4AM	0	0	0	3	13	38	13	3	1	0	0	0
4-5AM	0	0	0	0	29	95	74	19	3	0	0	0
5-6AM	0	1	0	6	39	220	238	50	7	1	0	0
6-7AM	2	0	1	36	162	554	444	103	9	1	0	0
7-8AM	0	1	1	60	285	1,024	677	72	8	0	0	0
8-9AM	1	1	6	81	373	891	468	45	3	1	0	0
9-10AM	1	1	9	88	332	706	328	46	0	0	0	0
10-11AM	1	5	20	85	355	688	297	32	1	0	0	0
11-12PM	2	4	16	151	374	738	251	28	0	0	0	0
12-1PM	5	12	15	121	424	693	284	24	1	0	0	0
1-2PM	2	10	10	136	437	668	316	41	3	1	0	0
2-3PM	7	13	30	179	465	701	292	42	7	0	0	0
3-4PM	28	45	112	287	542	848	324	47	3	0	0	0
4-5PM	264	423	212	177	329	604	257	15	4	0	0	0
5-6PM	150	120	94	190	448	707	302	38	4	0	0	0
6-7PM	1	4	9	50	263	576	338	49	9	0	0	0
7-8PM	0	0	3	28	187	408	264	36	5	2	0	0
8-9PM	0	0	1	29	170	277	169	23	1	0	0	0
9-10PM	0	0	0	23	119	163	82	15	4	0	0	0
10-11PM	0	2	2	11	57	107	50	5	1	0	0	0
11-12AM	0	0	1	3	31	58	30	3	5	0	0	0
Total	464	643	544	1,750	5,487	10,827	5,527	740	81	6	0	0
% of Daily Traffic	1.8%	2.5%	2.1%	6.7%	21.0%	41.5%	21.2%	2.8%	0.3%	0.0%	0.0%	0.0%

Thursday 5/15/2025 at NH 9 (Dover Rd) at Pembroke TL

	Speed (mph) both directions											
	0-25	26-30	31-35	36-40	41-45	46-50	51-55	56-60	61-65	66-70	71-75	75+
12-1 AM	0	0	0	5	24	35	18	3	0	0	0	0
1-2 AM	0	0	1	3	10	9	7	2	0	0	0	0
2-3AM	0	0	0	1	16	26	7	2	0	0	0	0
3-4AM	0	0	0	5	11	30	18	3	0	0	0	0
4-5AM	0	0	0	4	21	110	58	15	3	0	0	0
5-6AM	0	0	2	15	58	243	232	50	7	2	0	0
6-7AM	0	0	5	22	122	576	435	73	6	2	0	0
7-8AM	4	4	12	72	381	1,082	494	46	4	0	0	0
8-9AM	2	2	14	124	408	871	363	23	1	0	0	0
9-10AM	2	2	5	100	325	732	296	25	2	0	0	0
10-11AM	6	8	24	102	383	712	264	26	3	0	0	0
11-12PM	1	10	23	85	386	688	274	24	4	0	0	0
12-1PM	14	5	36	139	368	651	291	28	4	0	0	0
1-2PM	2	7	28	123	416	680	306	34	2	0	0	0
2-3PM	4	3	29	175	462	736	299	32	4	0	0	0
3-4PM	361	214	111	214	379	603	252	33	3	0	0	0
4-5PM	484	642	223	56	177	418	220	25	1	0	0	0
5-6PM	103	167	133	175	378	650	352	48	5	0	0	0
6-7PM	3	3	8	80	206	588	363	44	5	0	0	0
7-8PM	1	3	3	27	171	374	299	31	3	0	0	0
8-9PM	0	1	5	51	169	328	163	15	1	1	0	0
9-10PM	0	2	5	40	188	181	50	2	0	0	0	0
10-11PM	1	0	2	25	78	101	37	10	1	0	0	0
11-12AM	0	0	0	5	31	50	26	5	0	0	0	0
Total	988	1,073	669	1,648	5,168	10,474	5,124	599	59	5	0	0
% of Daily Traffic	3.8%	4.2%	2.6%	6.4%	20.0%	40.6%	19.9%	2.3%	0.2%	0.0%	0.0%	0.0%

Tuesday 5/13/2025 at NH 9 (Dover Rd) at Pembroke TL

Vehicle Class both directions

	1	2	3	4	5	6	7	8	9	10	11	12	13
12-1 AM	1	42	2	0	2	0	0	0	8	0	0	0	0
1-2 AM	0	33	3	0	2	0	0	0	5	0	2	0	0
2-3AM	0	41	7	0	3	0	0	1	4	0	0	0	0
3-4AM	0	51	3	0	3	1	0	3	8	0	1	1	0
4-5AM	1	142	45	0	12	1	0	1	14	0	0	0	0
5-6AM	3	311	246	0	15	10	1	3	12	9	0	0	0
6-7AM	8	753	443	2	56	19	7	7	19	5	0	0	0
7-8AM	10	1,451	506	3	59	24	7	6	24	7	0	0	0
8-9AM	6	1,197	431	2	58	21	8	12	30	9	0	0	0
9-10AM	4	988	370	4	33	39	8	8	32	9	0	0	0
10-11AM	10	997	389	3	45	34	10	5	43	12	0	0	0
11-12PM	16	915	405	1	46	35	3	11	33	9	1	0	0
12-1PM	12	1,018	384	3	51	28	12	10	37	12	0	0	0
1-2PM	13	1,015	409	2	40	33	9	10	23	8	0	0	0
2-3PM	16	1,166	454	4	46	26	9	11	25	8	0	0	0
3-4PM	23	1,515	548	3	40	24	2	9	19	3	0	0	0
4-5PM	23	1,619	531	0	44	14	9	4	16	3	0	0	0
5-6PM	29	1,488	480	0	30	12	0	10	12	0	0	0	0
6-7PM	19	917	323	1	18	1	0	5	6	0	0	0	0
7-8PM	9	696	210	4	11	0	0	0	4	0	0	0	0
8-9PM	6	538	126	1	10	1	0	1	2	1	0	0	0
9-10PM	3	340	22	1	6	1	0	0	5	0	0	0	0
10-11PM	0	186	14	0	2	0	0	0	3	0	1	0	0
11-12AM	1	111	4	1	1	0	0	1	6	0	0	0	0
Total	213	17,530	6,355	35	633	324	85	118	390	95	5	1	0
% of Daily Traffic	0.8%	68.0%	24.6%	0.1%	2.5%	1.3%	0.3%	0.5%	1.5%	0.4%	0.0%	0.0%	0.0%

Wednesday 5/14/2025 at NH 9 (Dover Rd) at Pembroke TL

Vehicle Class both directions

	1	2	3	4	5	6	7	8	9	10	11	12	13
12-1 AM	0	55	6	0	1	0	0	0	2	0	0	0	0
1-2 AM	0	33	2	1	1	0	0	0	3	0	0	0	0
2-3AM	0	41	7	0	3	0	0	1	4	0	0	0	0
3-4AM	0	50	9	0	3	0	0	0	9	0	0	0	0
4-5AM	1	159	38	0	9	0	0	0	13	0	0	0	0
5-6AM	2	278	229	0	20	7	0	5	15	6	0	0	0
6-7AM	4	739	439	1	56	28	1	11	27	6	0	0	0
7-8AM	9	1,469	543	3	46	15	8	9	22	4	0	0	0
8-9AM	6	1,291	442	5	50	25	9	10	28	4	0	0	0
9-10AM	1	965	394	3	45	31	6	14	37	15	0	0	0
10-11AM	3	961	395	1	40	24	10	7	34	9	0	0	0
11-12PM	12	1,017	388	4	34	37	7	8	40	17	0	0	0
12-1PM	17	1,048	368	1	50	28	8	8	36	15	0	0	0
1-2PM	11	1,079	399	4	48	32	9	10	21	11	0	0	0
2-3PM	12	1,156	428	11	48	32	10	6	18	15	0	0	0
3-4PM	18	1,497	597	1	49	28	9	14	20	3	0	0	0
4-5PM	21	1,606	583	1	39	12	2	6	15	0	0	0	0
5-6PM	30	1,540	422	0	33	4	0	10	14	0	0	0	0
6-7PM	18	930	310	1	24	2	1	6	6	1	0	0	0
7-8PM	17	655	225	3	24	2	0	1	6	0	0	0	0
8-9PM	3	518	139	4	3	0	0	0	3	0	0	0	0
9-10PM	1	368	24	2	5	0	0	1	5	0	0	0	0
10-11PM	0	215	10	0	2	1	0	0	7	0	0	0	0
11-12AM	0	120	8	0	1	0	0	0	2	0	0	0	0
Total	186	17,790	6,405	46	634	308	80	127	387	106	0	0	0
% of Daily Traffic	0.7%	68.2%	24.6%	0.2%	2.4%	1.2%	0.3%	0.5%	1.5%	0.4%	0.0%	0.0%	0.0%

Thursday 5/15/2025 at NH 9 (Dover Rd) at Pembroke TL

Vehicle Class both directions

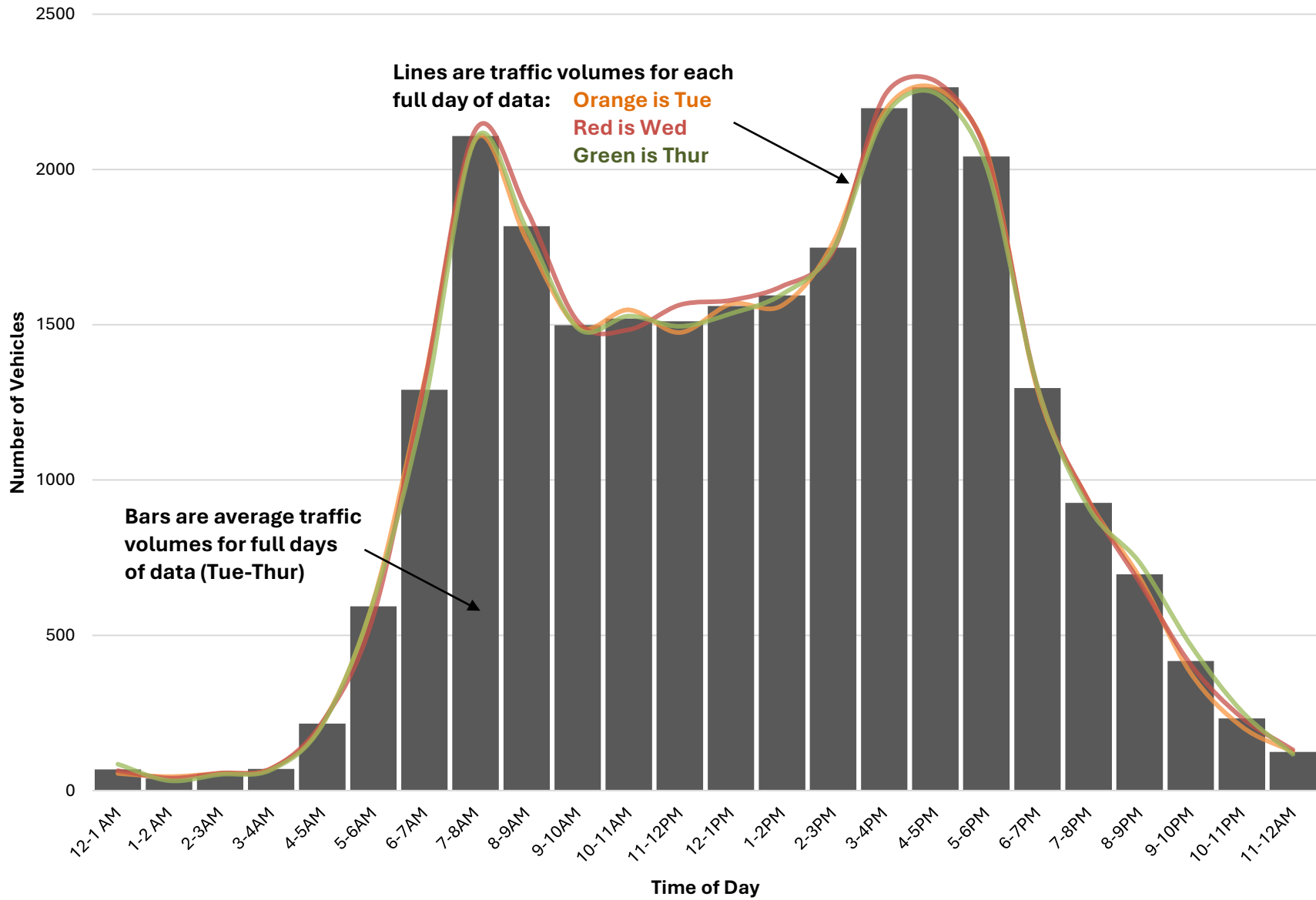
	1	2	3	4	5	6	7	8	9	10	11	12	13
12-1 AM	2	69	7	0	1	0	0	0	4	0	2	0	0
1-2 AM	0	24	1	0	0	0	0	0	5	0	2	0	0
2-3AM	0	37	4	0	2	0	0	0	6	0	3	0	0
3-4AM	0	47	6	0	2	0	0	1	11	0	0	0	0
4-5AM	1	145	45	0	6	2	0	0	12	0	0	0	0
5-6AM	2	309	249	0	19	4	1	2	18	5	0	0	0
6-7AM	2	697	408	1	65	25	5	6	21	11	0	0	0
7-8AM	2	1,474	505	3	54	20	8	5	22	6	0	0	0
8-9AM	0	1,196	466	4	50	25	3	15	36	13	0	0	0
9-10AM	0	960	390	8	38	28	7	12	33	13	0	0	0
10-11AM	3	1,021	367	2	44	25	13	19	25	9	0	0	0
11-12PM	2	1,017	356	3	37	25	7	9	31	8	0	0	0
12-1PM	3	1,011	383	5	53	23	8	13	29	8	0	0	0
1-2PM	9	1,078	382	5	49	25	5	11	27	7	0	0	0
2-3PM	3	1,183	449	4	42	22	6	12	20	3	0	0	0
3-4PM	7	1,441	608	4	56	16	1	12	23	2	0	0	0
4-5PM	9	1,607	545	2	45	8	1	13	12	3	1	0	0
5-6PM	5	1,461	494	1	31	2	0	8	8	1	0	0	0
6-7PM	6	949	311	1	23	2	0	5	3	0	0	0	0
7-8PM	1	649	231	2	19	0	0	1	8	0	1	0	0
8-9PM	1	593	128	0	10	0	0	0	1	1	0	0	0
9-10PM	3	429	24	2	8	0	0	0	2	0	0	0	0
10-11PM	1	234	15	1	2	1	0	0	1	0	0	0	0
11-12AM	0	108	2	0	1	0	0	0	6	0	0	0	0
Total	62	17,739	6,376	48	657	253	65	144	364	90	9	0	0
% of Daily Traffic	0.2%	68.7%	24.7%	0.2%	2.5%	1.0%	0.3%	0.6%	1.4%	0.3%	0.0%	0.0%	0.0%

NH 9 (Dover Rd) at Pembroke TL (both ways)

	Mon 5/12/25	Tue 5/13/25	Wed 5/14/25	Thur 5/15/25	Fri 5/16/25	Full Day Avg (Tue-Thur)
12-1 AM	0	55	64	85	69	68
1-2 AM	0	45	40	32	43	39
2-3AM	0	56	56	52	57	55
3-4AM	0	71	71	67	70	70
4-5AM	0	216	220	211	199	216
5-6AM	0	610	562	609	534	594
6-7AM	0	1319	1312	1241	1155	1291
7-8AM	0	2097	2128	2099	2000	2108
8-9AM	0	1774	1870	1808	1806	1817
9-10AM	0	1495	1511	1489	1322	1498
10-11AM	1410	1548	1484	1528	0	1520
11-12PM	1574	1475	1564	1495	0	1511
12-1PM	1593	1567	1579	1536	0	1561
1-2PM	1513	1562	1624	1598	0	1595
2-3PM	1789	1765	1736	1744	0	1748
3-4PM	2206	2186	2236	2170	0	2197
4-5PM	2249	2263	2285	2246	0	2265
5-6PM	1917	2061	2053	2011	0	2042
6-7PM	1207	1290	1299	1300	0	1296
7-8PM	834	934	933	912	0	926
8-9PM	674	686	670	734	0	697
9-10PM	364	378	406	468	0	417
10-11PM	221	206	235	255	0	232
11-12AM	130	125	131	117	0	124
	17,681	25,784	26,069	25,807	7,255	25,887

- The average peak volume is 2265 vehicles occurring between 4-5PM
- The highest recorded peak volume was 2285 vehicles on Wed between 4-5PM
- The Average Daily Traffic Volume is 25,887

Daily Traffic Profile at NH 9 (Dover Rd) at Pembroke TL (both ways)

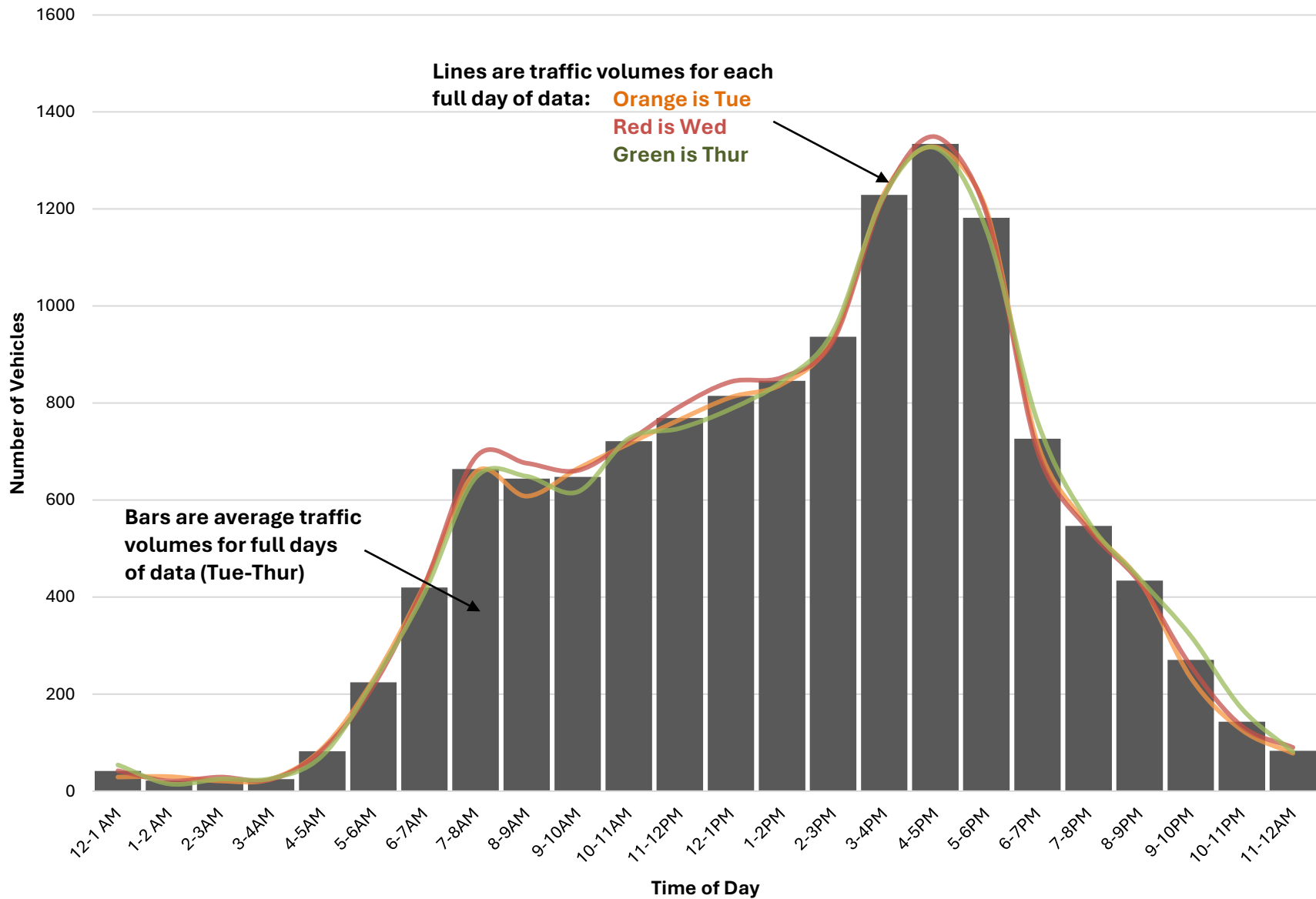


NH 9 (Dover Rd) at Pembroke TL (EB)

	Mon 5/12/25	Tue 5/13/25	Wed 5/14/25	Thur 5/15/25	Fri 5/16/25	Full Day Avg (Tue-Thur)
12-1 AM	0	29	42	54	46	42
1-2 AM	0	30	21	15	21	22
2-3AM	0	21	29	25	32	25
3-4AM	0	25	24	26	20	25
4-5AM	0	88	85	73	82	82
5-6AM	0	230	217	226	197	224
6-7AM	0	426	425	409	392	420
7-8AM	0	658	688	646	661	664
8-9AM	0	608	676	649	690	644
9-10AM	0	665	661	617	546	648
10-11AM	698	716	722	727	0	722
11-12PM	796	766	793	748	0	769
12-1PM	840	812	844	788	0	815
1-2PM	786	839	853	845	0	846
2-3PM	956	934	928	948	0	937
3-4PM	1258	1233	1226	1228	0	1229
4-5PM	1338	1328	1349	1326	0	1334
5-6PM	1132	1198	1191	1157	0	1182
6-7PM	680	717	701	762	0	727
7-8PM	474	547	539	555	0	547
8-9PM	421	434	430	438	0	434
9-10PM	217	234	258	320	0	271
10-11PM	124	126	134	170	0	143
11-12AM	83	78	90	81	0	83
	9,803	12,742	12,926	12,833	2,687	12,834

- The average peak volume is 1334 vehicles occurring between 4-5PM
- The highest recorded peak volume was 1349 vehicles on Wed between 4-5PM
- The Average Daily Traffic Volume is 12,834

Daily Traffic Profile at NH 9 (Dover Rd) at Pembroke TL (EB)



NH 9 (Dover Rd) at Pembroke TL (WB)

	Mon 5/12/25	Tue 5/13/25	Wed 5/14/25	Thur 5/15/25	Fri 5/16/25	Full Day Avg (Tue-Thur)
12-1 AM	0	26	22	31	23	26
1-2 AM	0	15	19	17	22	17
2-3AM	0	35	27	27	25	30
3-4AM	0	46	47	41	50	45
4-5AM	0	128	135	138	117	134
5-6AM	0	380	345	383	337	369
6-7AM	0	893	887	832	763	871
7-8AM	0	1439	1440	1453	1339	1444
8-9AM	0	1166	1194	1159	1116	1173
9-10AM	0	830	850	872	776	851
10-11AM	712	832	762	801	0	798
11-12PM	778	709	771	747	0	742
12-1PM	753	755	735	748	0	746
1-2PM	727	723	771	753	0	749
2-3PM	833	831	808	796	0	812
3-4PM	948	953	1010	942	0	968
4-5PM	911	935	936	920	0	930
5-6PM	785	863	862	854	0	860
6-7PM	527	573	598	538	0	570
7-8PM	360	387	394	357	0	379
8-9PM	253	252	240	296	0	263
9-10PM	147	144	148	148	0	147
10-11PM	97	80	101	85	0	89
11-12AM	47	47	41	36	0	41
	7,878	13,042	13,143	12,974	4,568	13,053

- The average peak volume is 1444 vehicles occurring between 7-8AM
- The highest recorded peak volume was 1453 vehicles on Thur between 7-8AM
- The Average Daily Traffic Volume is 13,053

Daily Traffic Profile at NH 9 (Dover Rd) at Pembroke TL (WB)

