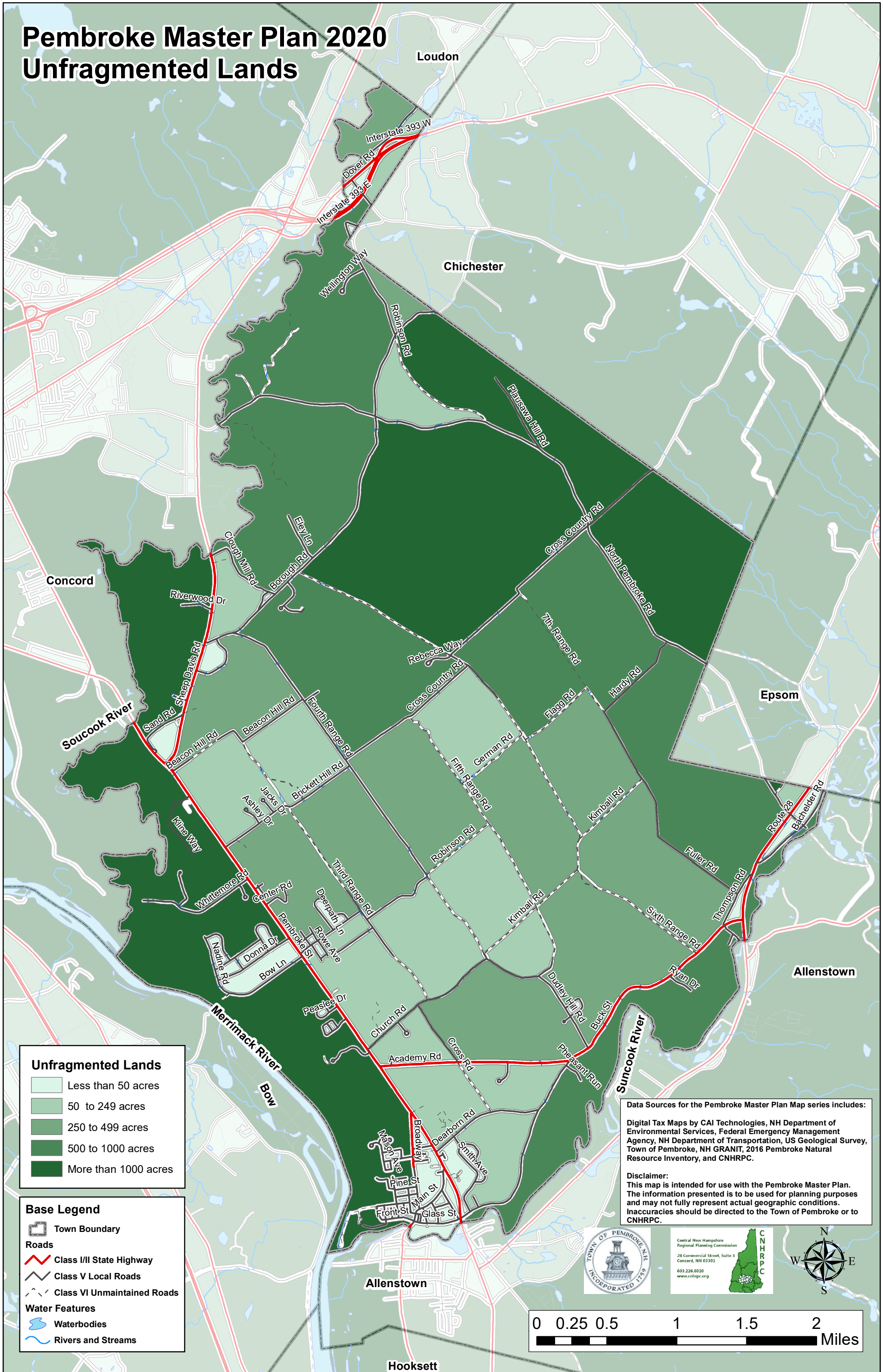


Pembroke Master Plan 2020

Unfragmented Lands



Unfragmented Lands

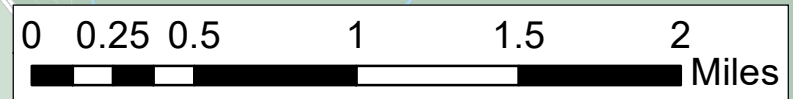
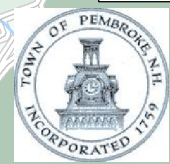
- Less than 50 acres
- 50 to 249 acres
- 250 to 499 acres
- 500 to 1000 acres
- More than 1000 acres

Base Legend

- Town Boundary
- Roads**
- Class I/II State Highway
- Class V Local Roads
- - - Class VI Unmaintained Roads
- Water Features**
- ~ Waterbodies
- ~ Rivers and Streams

Data Sources for the Pembroke Master Plan Map series includes:
 Digital Tax Maps by CAI Technologies, NH Department of Environmental Services, Federal Emergency Management Agency, NH Department of Transportation, US Geological Survey, Town of Pembroke, NH GRANIT, 2016 Pembroke Natural Resource Inventory, and CNHRPC.

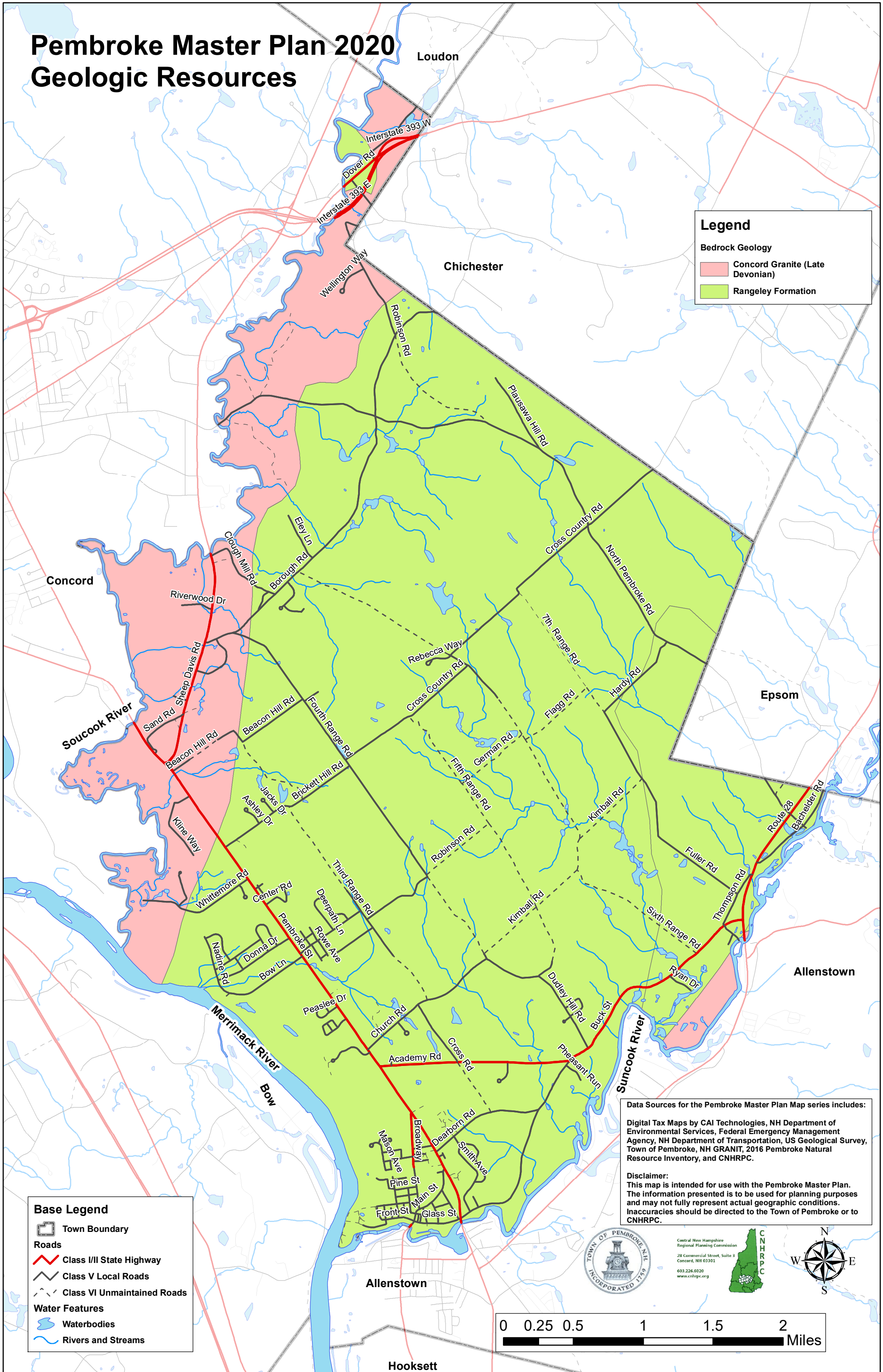
Disclaimer:
 This map is intended for use with the Pembroke Master Plan. The information presented is to be used for planning purposes and may not fully represent actual geographic conditions. Inaccuracies should be directed to the Town of Pembroke or to CNHRPC.



Hooksett

Pembroke Master Plan 2020

Geologic Resources



Legend

Bedrock Geology

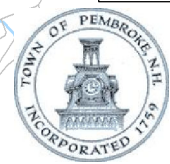
- Concord Granite (Late Devonian)
- Rangeley Formation

Base Legend

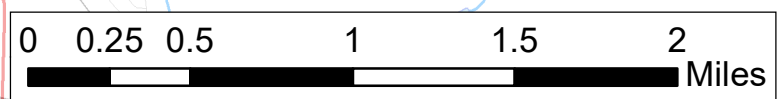
- Town Boundary
- Roads**
 - Class I/II State Highway
 - Class V Local Roads
 - Class VI Unmaintained Roads
- Water Features**
 - Waterbodies
 - Rivers and Streams

Data Sources for the Pembroke Master Plan Map series includes:
 Digital Tax Maps by CAI Technologies, NH Department of Environmental Services, Federal Emergency Management Agency, NH Department of Transportation, US Geological Survey, Town of Pembroke, NH GRANIT, 2016 Pembroke Natural Resource Inventory, and CNHRPC.

Disclaimer:
 This map is intended for use with the Pembroke Master Plan. The information presented is to be used for planning purposes and may not fully represent actual geographic conditions. Inaccuracies should be directed to the Town of Pembroke or to CNHRPC.



Central New Hampshire
 Regional Planning Commission
 28 Commercial Street, Suite 3
 Concord, NH 03301
 603.226.6020
 www.cnhrpc.org



Pembroke Master Plan 2020

Water Resources

Legend

- Public Water Supplies
- Watershed Boundary
- Wetlands
- Floodplains
 - 1% Annual Flood Risk
 - .5% Annual Flood Risk
- Aquifer Transmissivity
 - 0 - 1,000 sq. ft./day
 - 1,000 - 2,000 sq. ft./day
 - 2,000 - 4,000 sq. ft./day
 - >4,000 sq. ft./day

Base Legend

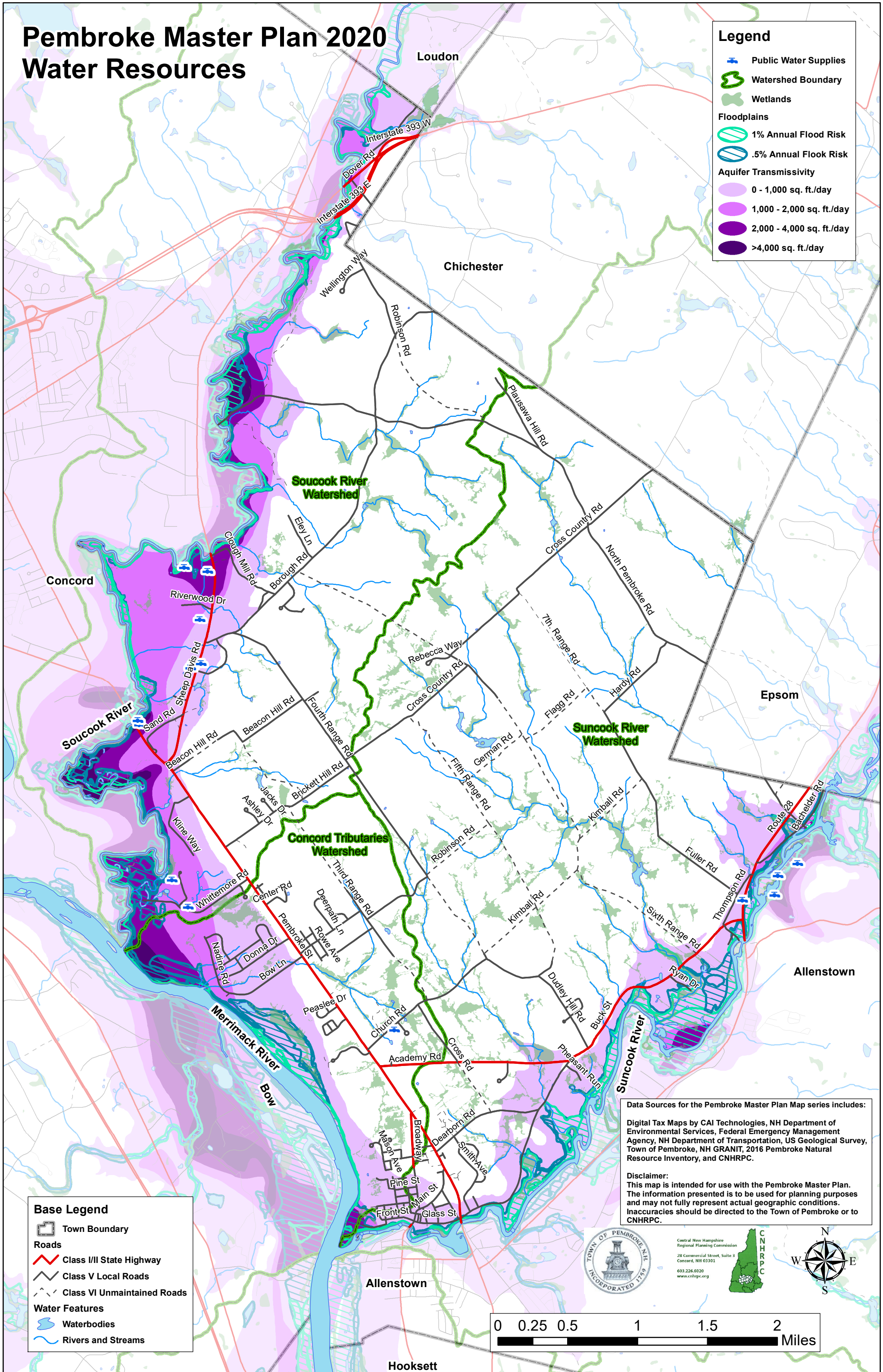
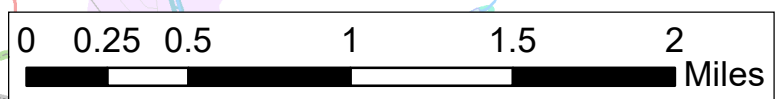
- Town Boundary
- Roads
 - Class I/II State Highway
 - Class V Local Roads
 - Class VI Unmaintained Roads
- Water Features
 - Waterbodies
 - Rivers and Streams

Data Sources for the Pembroke Master Plan Map series includes:
 Digital Tax Maps by CAI Technologies, NH Department of Environmental Services, Federal Emergency Management Agency, NH Department of Transportation, US Geological Survey, Town of Pembroke, NH GRANIT, 2016 Pembroke Natural Resource Inventory, and CNHRPC.

Disclaimer:
 This map is intended for use with the Pembroke Master Plan. The information presented is to be used for planning purposes and may not fully represent actual geographic conditions. Inaccuracies should be directed to the Town of Pembroke or to CNHRPC.



Central New Hampshire
 Regional Planning Commission
 28 Commercial Street, Suite 3
 Concord, NH 03301
 603.226.6020
 www.cnhrpc.org



Pembroke Master Plan 2020 Topography and Wetlands

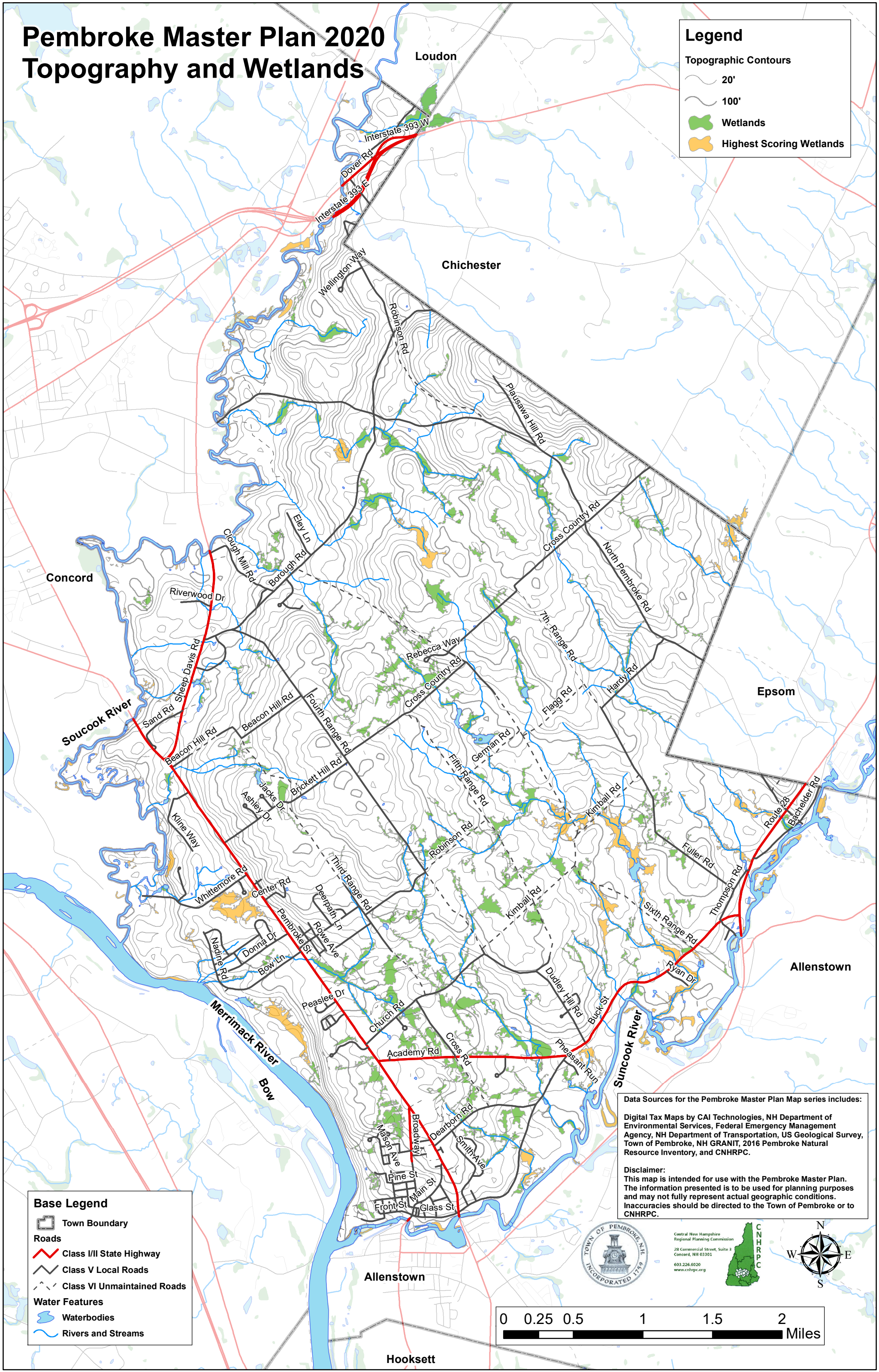
Legend

Topographic Contours

- 20'
- 100'

Wetlands

- Highest Scoring Wetlands



Base Legend

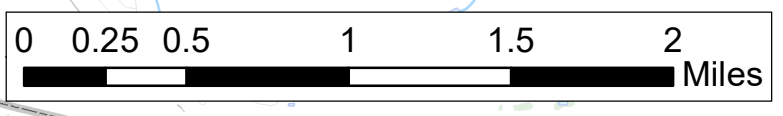
- Town Boundary
- Roads
 - Class I/II State Highway
 - Class V Local Roads
 - Class VI Unmaintained Roads
- Water Features
 - Waterbodies
 - Rivers and Streams

Data Sources for the Pembroke Master Plan Map series includes:
 Digital Tax Maps by CAI Technologies, NH Department of Environmental Services, Federal Emergency Management Agency, NH Department of Transportation, US Geological Survey, Town of Pembroke, NH GRANIT, 2016 Pembroke Natural Resource Inventory, and CNHRPC.

Disclaimer:
 This map is intended for use with the Pembroke Master Plan. The information presented is to be used for planning purposes and may not fully represent actual geographic conditions. Inaccuracies should be directed to the Town of Pembroke or to CNHRPC.



Central New Hampshire
 Regional Planning Commission
 28 Commercial Street, Suite 3
 Concord, NH 03301
 603.226.6020
 www.cnhrpc.org



Pembroke Master Plan 2020

Prime Agricultural Soils

Legend

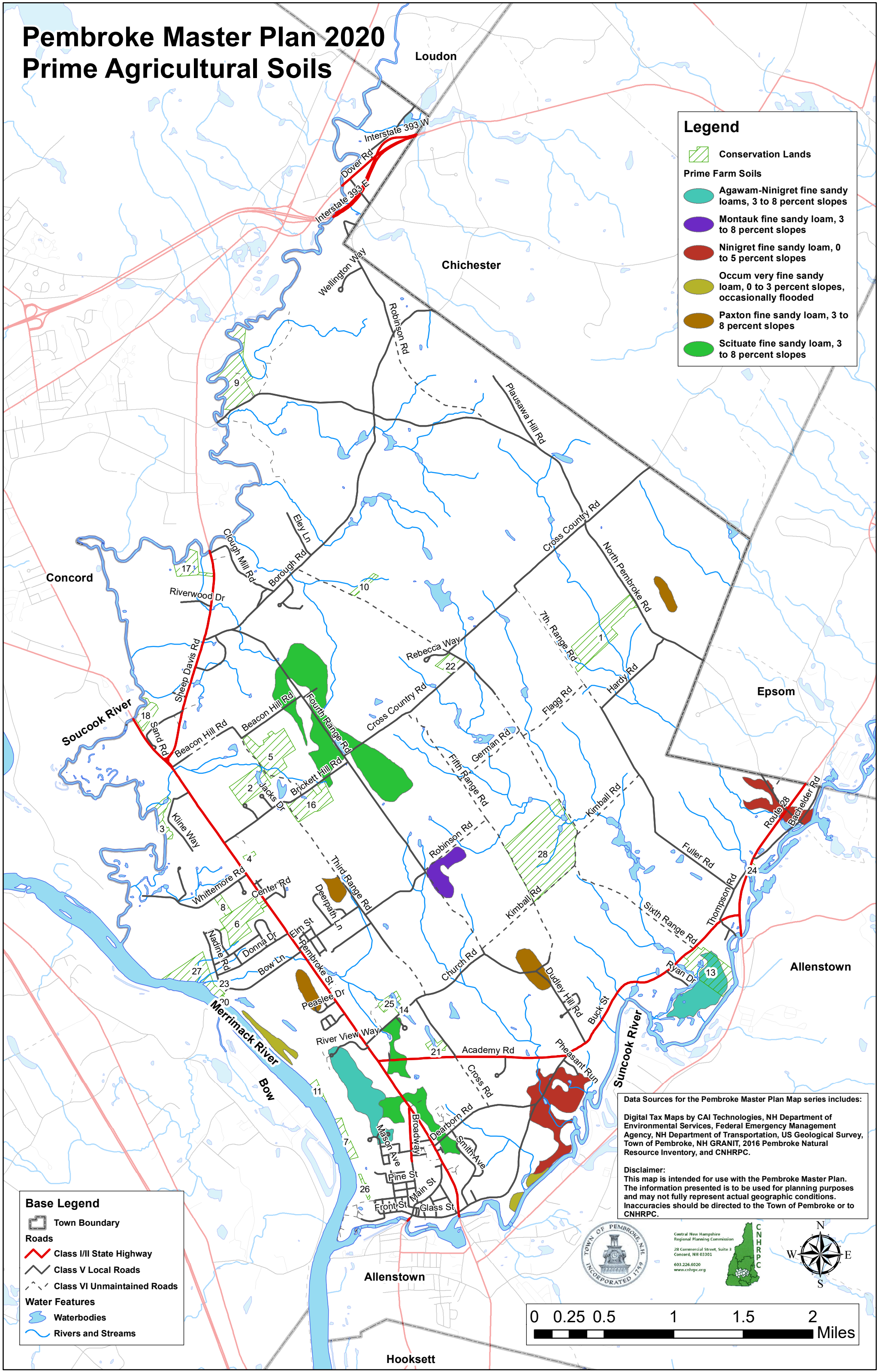
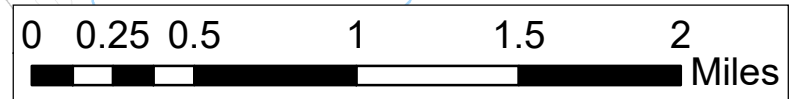
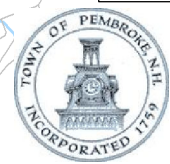
- Conservation Lands
- Prime Farm Soils**
 - Agawam-Ninigret fine sandy loams, 3 to 8 percent slopes
 - Montauk fine sandy loam, 3 to 8 percent slopes
 - Ninigret fine sandy loam, 0 to 5 percent slopes
 - Occum very fine sandy loam, 0 to 3 percent slopes, occasionally flooded
 - Paxton fine sandy loam, 3 to 8 percent slopes
 - Scituate fine sandy loam, 3 to 8 percent slopes

Base Legend

- Town Boundary
- Roads**
 - Class I/II State Highway
 - Class V Local Roads
 - Class VI Unmaintained Roads
- Water Features**
 - Waterbodies
 - Rivers and Streams

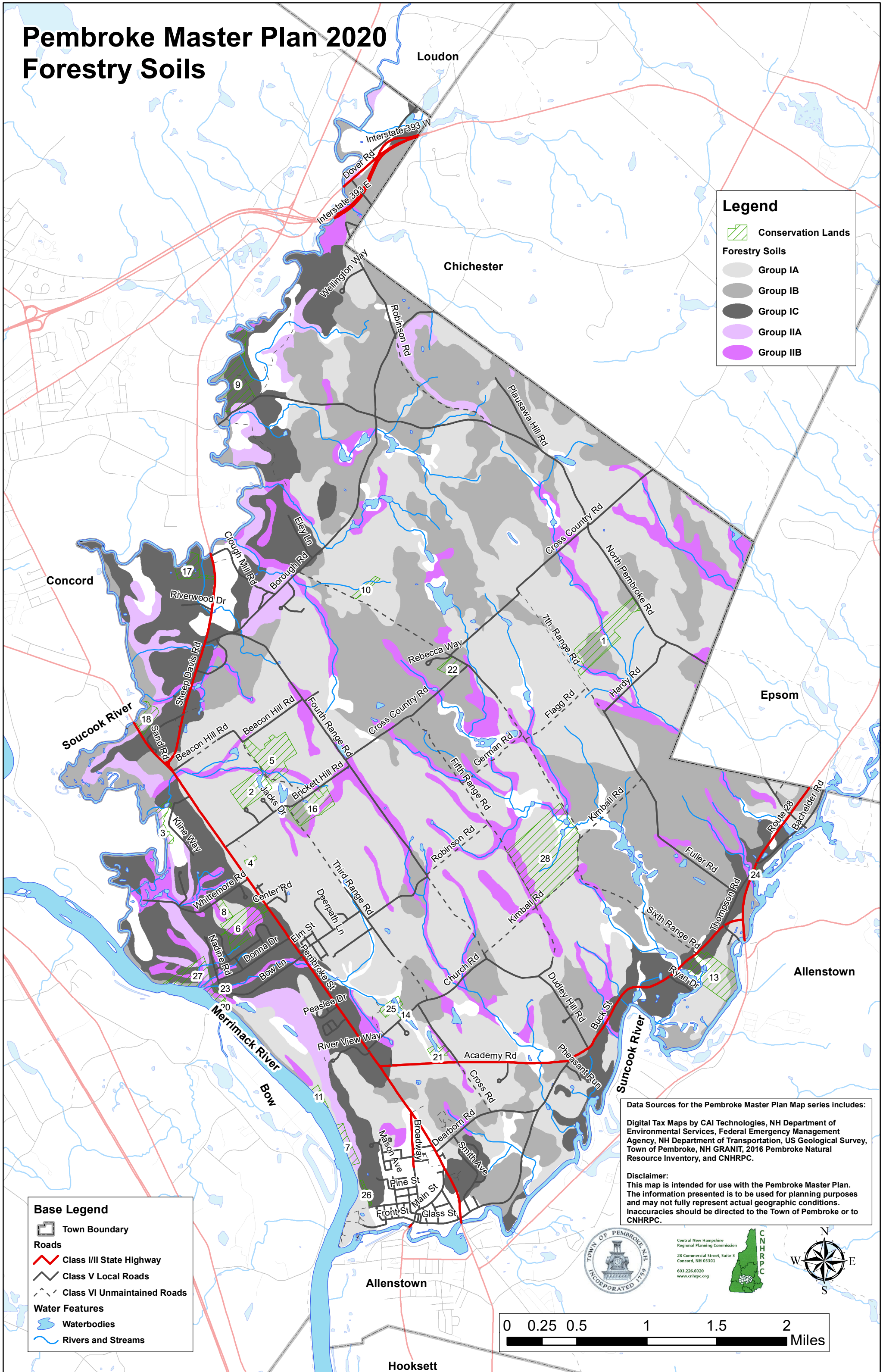
Data Sources for the Pembroke Master Plan Map series includes:
 Digital Tax Maps by CAI Technologies, NH Department of Environmental Services, Federal Emergency Management Agency, NH Department of Transportation, US Geological Survey, Town of Pembroke, NH GRANIT, 2016 Pembroke Natural Resource Inventory, and CNHRPC.

Disclaimer:
 This map is intended for use with the Pembroke Master Plan. The information presented is to be used for planning purposes and may not fully represent actual geographic conditions. Inaccuracies should be directed to the Town of Pembroke or to CNHRPC.



Pembroke Master Plan 2020

Forestry Soils



Legend

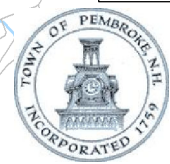
- Conservation Lands
- Forestry Soils**
 - Group IA
 - Group IB
 - Group IC
 - Group IIA
 - Group IIB

Base Legend

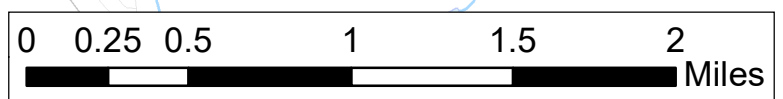
- Town Boundary
- Roads**
 - Class I/II State Highway
 - Class V Local Roads
 - Class VI Unmaintained Roads
- Water Features**
 - Waterbodies
 - Rivers and Streams

Data Sources for the Pembroke Master Plan Map series includes:
 Digital Tax Maps by CAI Technologies, NH Department of Environmental Services, Federal Emergency Management Agency, NH Department of Transportation, US Geological Survey, Town of Pembroke, NH GRANIT, 2016 Pembroke Natural Resource Inventory, and CNHRPC.

Disclaimer:
 This map is intended for use with the Pembroke Master Plan. The information presented is to be used for planning purposes and may not fully represent actual geographic conditions. Inaccuracies should be directed to the Town of Pembroke or to CNHRPC.



Central New Hampshire
 Regional Planning Commission
 28 Commercial Street, Suite 3
 Concord, NH 03301
 603.226.6020
 www.cnhrpc.org



Pembroke Master Plan 2020

Scenic Views


1. Town Hall
2. Keniston Conservation Area
3. Mary Bartlett Grange view
4. Academy Rd Marsh
5. Soucook River at Sheep Davis
6. Soucook River at No. Pembroke Rd
7. No. Pembroke Rd Lower Ames Bk
8. Suncook River bridge at Mills
9. RR bridge at lower Bridge St
10. Entrance into Memorial Park
11. Suncook-Merrimack Rivers confluence
12. Merrimack River at bend
13. Pembroke Pines
14. Upper Ames Bk Conservation Area
15. Lower Ames Bk at Batchelder Rd
16. Lower Batchelder Rd near Suncook
17. Suncook River from Old Bear Bk Rd
18. Hillman Farm from Buck St
19. Lower Pettengill River from end Ryan Rd
20. Suncook River Bend Marsh from Buck St
21. Open fields off NE Olympic Fields drive
22. Riparian slough fields off Gooses Way
23. Upper Bragfield Pd from Brickett Hill Rd
24. Vernal pond at Butterfield Cons. Area
25. AGNE pond and fields at Cons. Area
26. Lower White Sands view of Merrimack
27. No. end of Bragfield Pond from edge
28. Lower Suncook River from Memorial Park
29. Merrimack River from White Sands
30. Lower Soucook River from rail trail
31. W. fork of Hartford Bk Academy Rd
32. Kimball & Sixth Range Marsh
33. Soucook River from Pembroke St Water Wks
34. Sixth Range Rd field edge
35. Upper Brush Rd field edge

Base Legend

Roads

-  Class I/II State Highway
-  Class V Local Roads
-  Class VI Unmaintained Roads

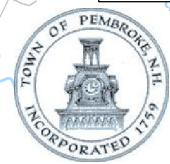
Water Features

-  Waterbodies
-  Rivers and Streams

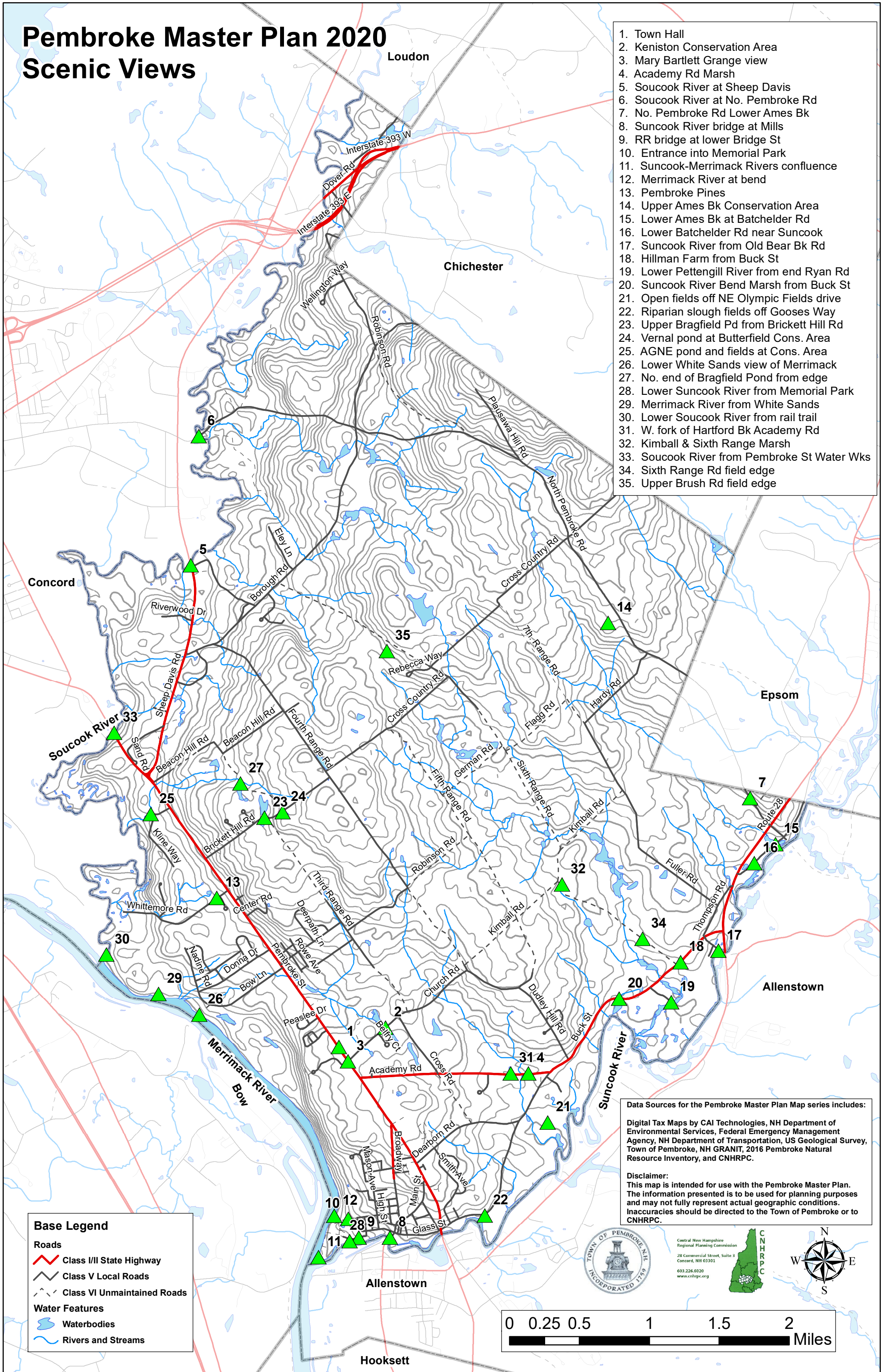
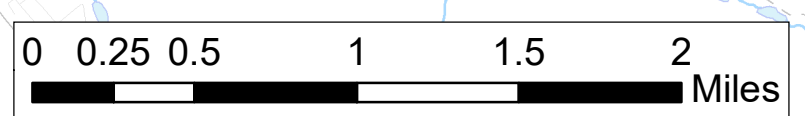
Data Sources for the Pembroke Master Plan Map series includes:

Digital Tax Maps by CAI Technologies, NH Department of Environmental Services, Federal Emergency Management Agency, NH Department of Transportation, US Geological Survey, Town of Pembroke, NH GRANIT, 2016 Pembroke Natural Resource Inventory, and CNHRPC.

Disclaimer:
 This map is intended for use with the Pembroke Master Plan. The information presented is to be used for planning purposes and may not fully represent actual geographic conditions. Inaccuracies should be directed to the Town of Pembroke or to CNHRPC.



Central New Hampshire
 Regional Planning Commission
 28 Commercial Street, Suite 3
 Concord, NH 03301
 603.226.6020
 www.cnhrpc.org



Pembroke Master Plan 2020 Conservation Lands

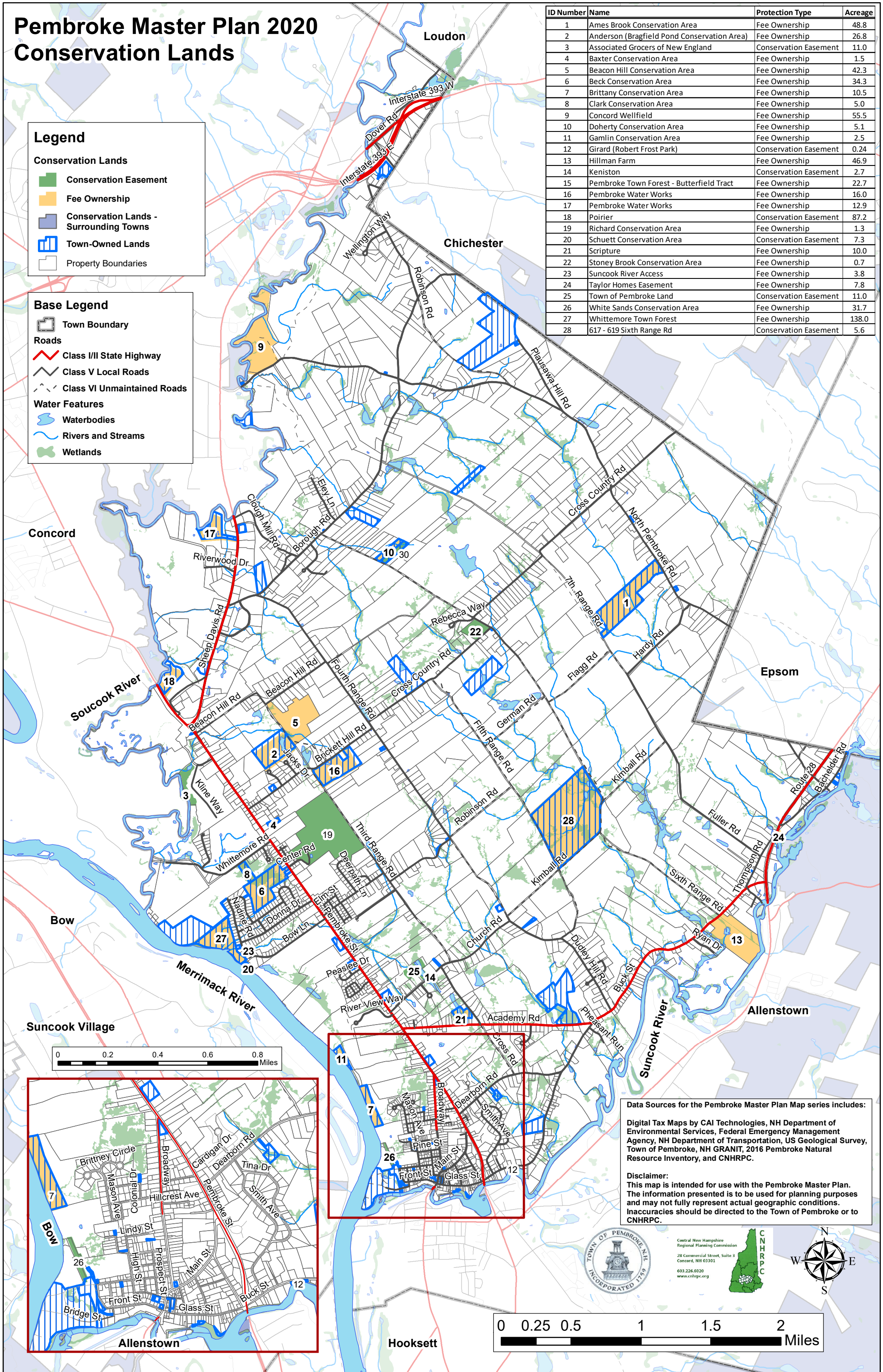
Legend

- Conservation Lands**
- Conservation Easement
 - Fee Ownership
 - Conservation Lands - Surrounding Towns
 - Town-Owned Lands
 - Property Boundaries

Base Legend

- Town Boundary**
- Roads**
- Class I/II State Highway
 - Class V Local Roads
 - Class VI Unmaintained Roads
- Water Features**
- Waterbodies
 - Rivers and Streams
 - Wetlands

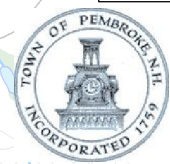
ID Number	Name	Protection Type	Acreage
1	Ames Brook Conservation Area	Fee Ownership	48.8
2	Anderson (Bragfield Pond Conservation Area)	Fee Ownership	26.8
3	Associated Grocers of New England	Conservation Easement	11.0
4	Baxter Conservation Area	Fee Ownership	1.5
5	Beacon Hill Conservation Area	Fee Ownership	42.3
6	Beck Conservation Area	Fee Ownership	34.3
7	Brittany Conservation Area	Fee Ownership	10.5
8	Clark Conservation Area	Fee Ownership	5.0
9	Concord Wellfield	Fee Ownership	55.5
10	Doherty Conservation Area	Fee Ownership	5.1
11	Gamlin Conservation Area	Fee Ownership	2.5
12	Girard (Robert Frost Park)	Conservation Easement	0.24
13	Hillman Farm	Fee Ownership	46.9
14	Keniston	Conservation Easement	2.7
15	Pembroke Town Forest - Butterfield Tract	Fee Ownership	22.7
16	Pembroke Water Works	Fee Ownership	16.0
17	Pembroke Water Works	Fee Ownership	12.9
18	Poirier	Conservation Easement	87.2
19	Richard Conservation Area	Fee Ownership	1.3
20	Schuetz Conservation Area	Conservation Easement	7.3
21	Scripture	Fee Ownership	10.0
22	Stoney Brook Conservation Area	Fee Ownership	0.7
23	Suncook River Access	Fee Ownership	3.8
24	Taylor Homes Easement	Fee Ownership	7.8
25	Town of Pembroke Land	Conservation Easement	11.0
26	White Sands Conservation Area	Fee Ownership	31.7
27	Whittemore Town Forest	Fee Ownership	138.0
28	617 - 619 Sixth Range Rd	Conservation Easement	5.6



Data Sources for the Pembroke Master Plan Map series includes:

Digital Tax Maps by CAI Technologies, NH Department of Environmental Services, Federal Emergency Management Agency, NH Department of Transportation, US Geological Survey, Town of Pembroke, NH GRANIT, 2016 Pembroke Natural Resource Inventory, and CNHRPC.

Disclaimer:
This map is intended for use with the Pembroke Master Plan. The information presented is to be used for planning purposes and may not fully represent actual geographic conditions. Inaccuracies should be directed to the Town of Pembroke or to CNHRPC.



Central New Hampshire
Regional Planning Commission
28 Commercial Street, Suite 3
Concord, NH 03301
603.226.6020
www.cnhrpc.org

