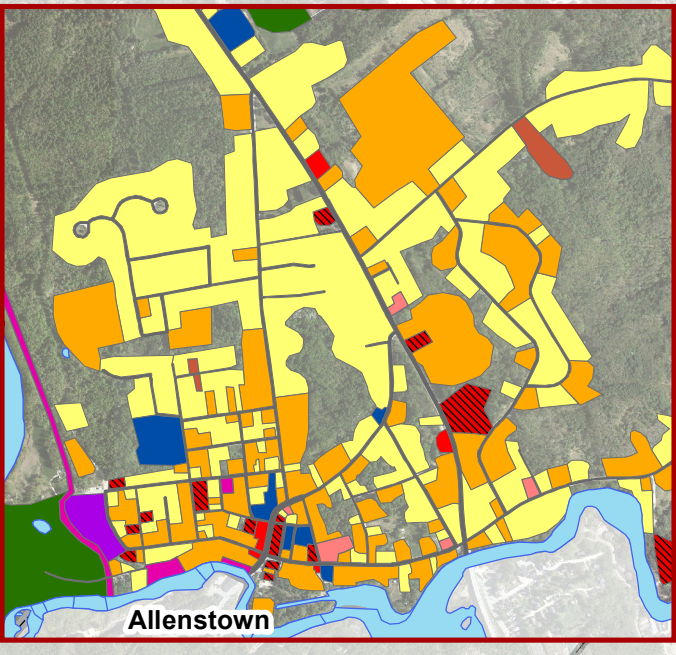
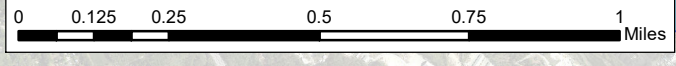
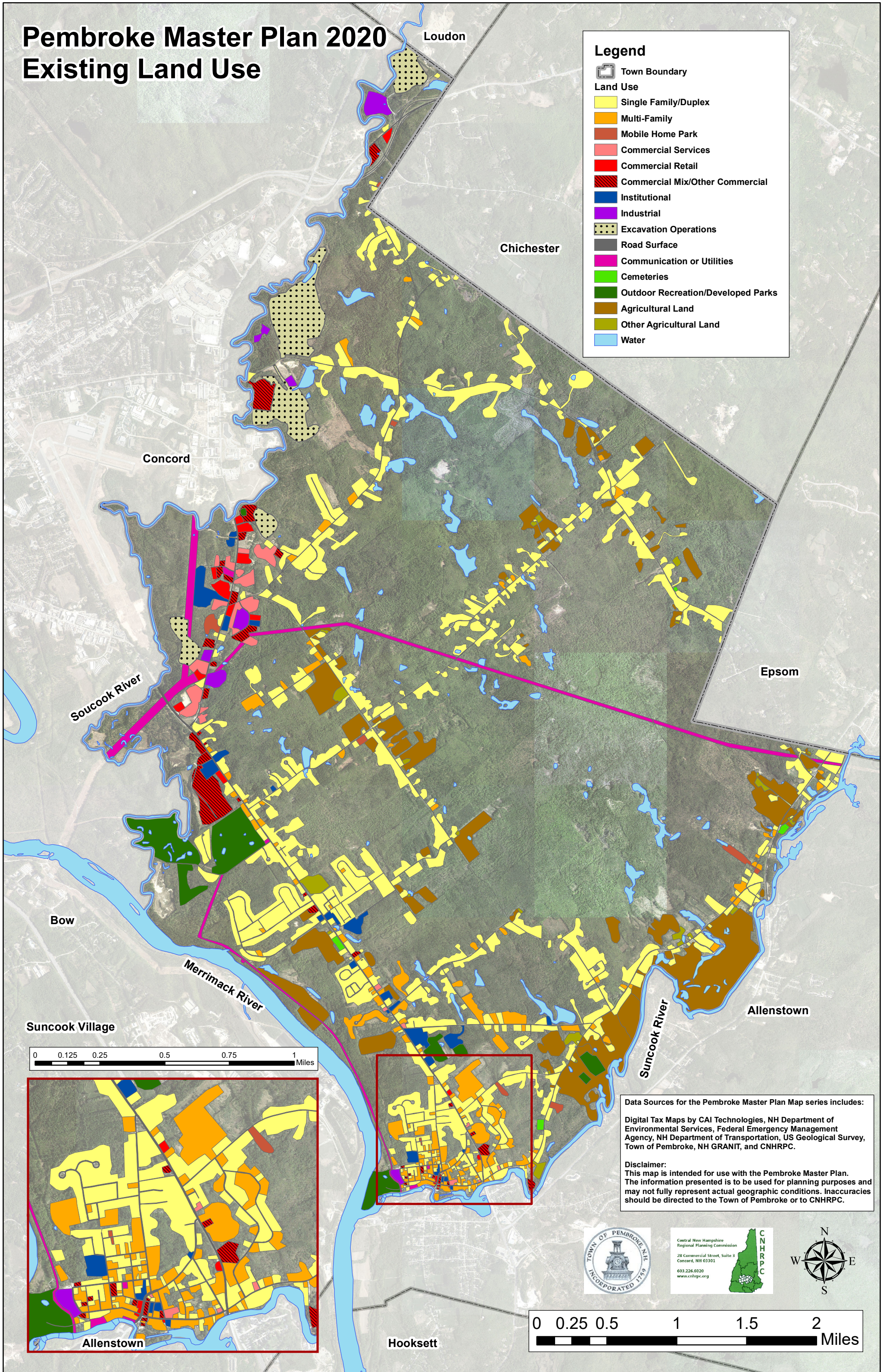


Pembroke Master Plan 2020

Existing Land Use

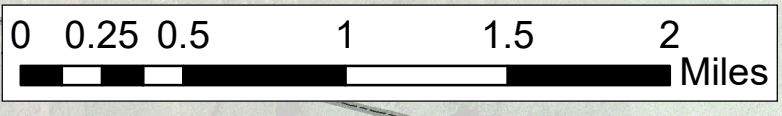
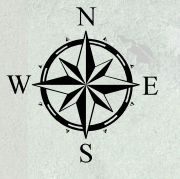
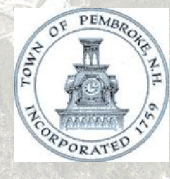
Legend

- Town Boundary
- Land Use**
- Single Family/Duplex
- Multi-Family
- Mobile Home Park
- Commercial Services
- Commercial Retail
- Commercial Mix/Other Commercial
- Institutional
- Industrial
- Excavation Operations
- Road Surface
- Communication or Utilities
- Cemeteries
- Outdoor Recreation/Developed Parks
- Agricultural Land
- Other Agricultural Land
- Water



Data Sources for the Pembroke Master Plan Map series includes:
 Digital Tax Maps by CAI Technologies, NH Department of Environmental Services, Federal Emergency Management Agency, NH Department of Transportation, US Geological Survey, Town of Pembroke, NH GRANIT, and CNHRPC.

Disclaimer:
 This map is intended for use with the Pembroke Master Plan. The information presented is to be used for planning purposes and may not fully represent actual geographic conditions. Inaccuracies should be directed to the Town of Pembroke or to CNHRPC.



Pembroke Master Plan 2020 Development Constraints

Legend

- Conservation Lands
- Wetlands
- Steep Slopes
- Excavated Areas
- Land Ownership**
- Town-Owned Lands
- State-Owned Lands
- School Lands
- Hydro Utility Lands
- Floodplains**
- 100-Year Floodplain
- 500-Year Floodplain
- Aquifer Transmissivity**
- 0 - 1,000 sq. ft./day
- 1,000 - 2,000 sq. ft./day
- 2,000 - 4,000 sq. ft./day
- >4,000 sq. ft./day
- Hydric Soils**
- Poorly drained
- Very poorly drained

Base Legend

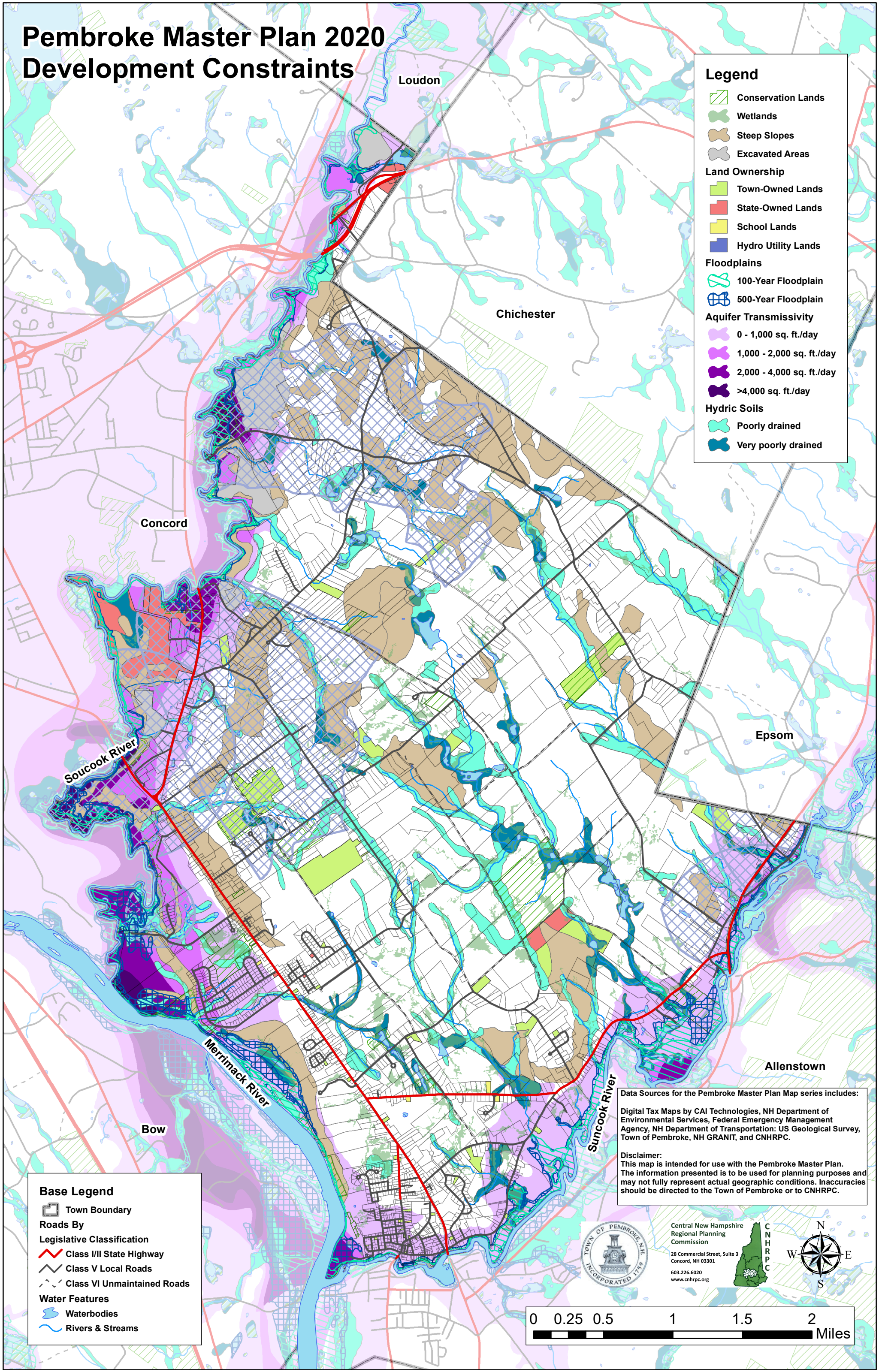
- Town Boundary
- Roads By Legislative Classification**
- Class I/II State Highway
- Class V Local Roads
- Class VI Unmaintained Roads
- Water Features**
- Waterbodies
- Rivers & Streams

Data Sources for the Pembroke Master Plan Map series includes:
 Digital Tax Maps by CAI Technologies, NH Department of Environmental Services, Federal Emergency Management Agency, NH Department of Transportation; US Geological Survey, Town of Pembroke, NH GRANIT, and CNHRPC.

Disclaimer:
 This map is intended for use with the Pembroke Master Plan. The information presented is to be used for planning purposes and may not fully represent actual geographic conditions. Inaccuracies should be directed to the Town of Pembroke or to CNHRPC.



Central New Hampshire
 Regional Planning
 Commission
 28 Commercial Street, Suite 3
 Concord, NH 03301
 603.226.6020
 www.cnhrpc.org



Loudon

Chichester

Concord

Epsom

Allenstown

Bow

Soucook River

Merrimack River

Suncook River








Pembroke Master Plan 2020

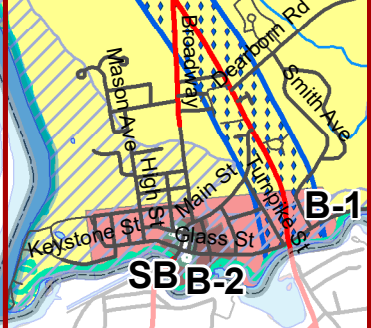
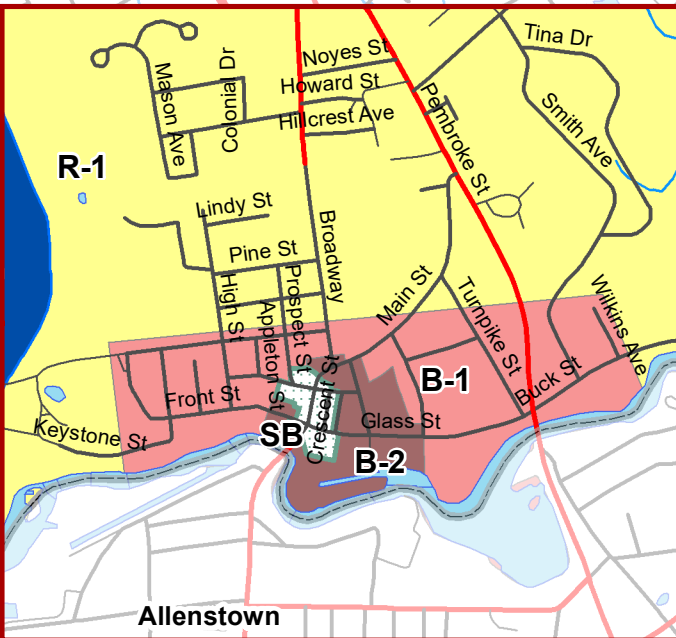
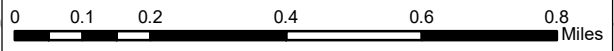
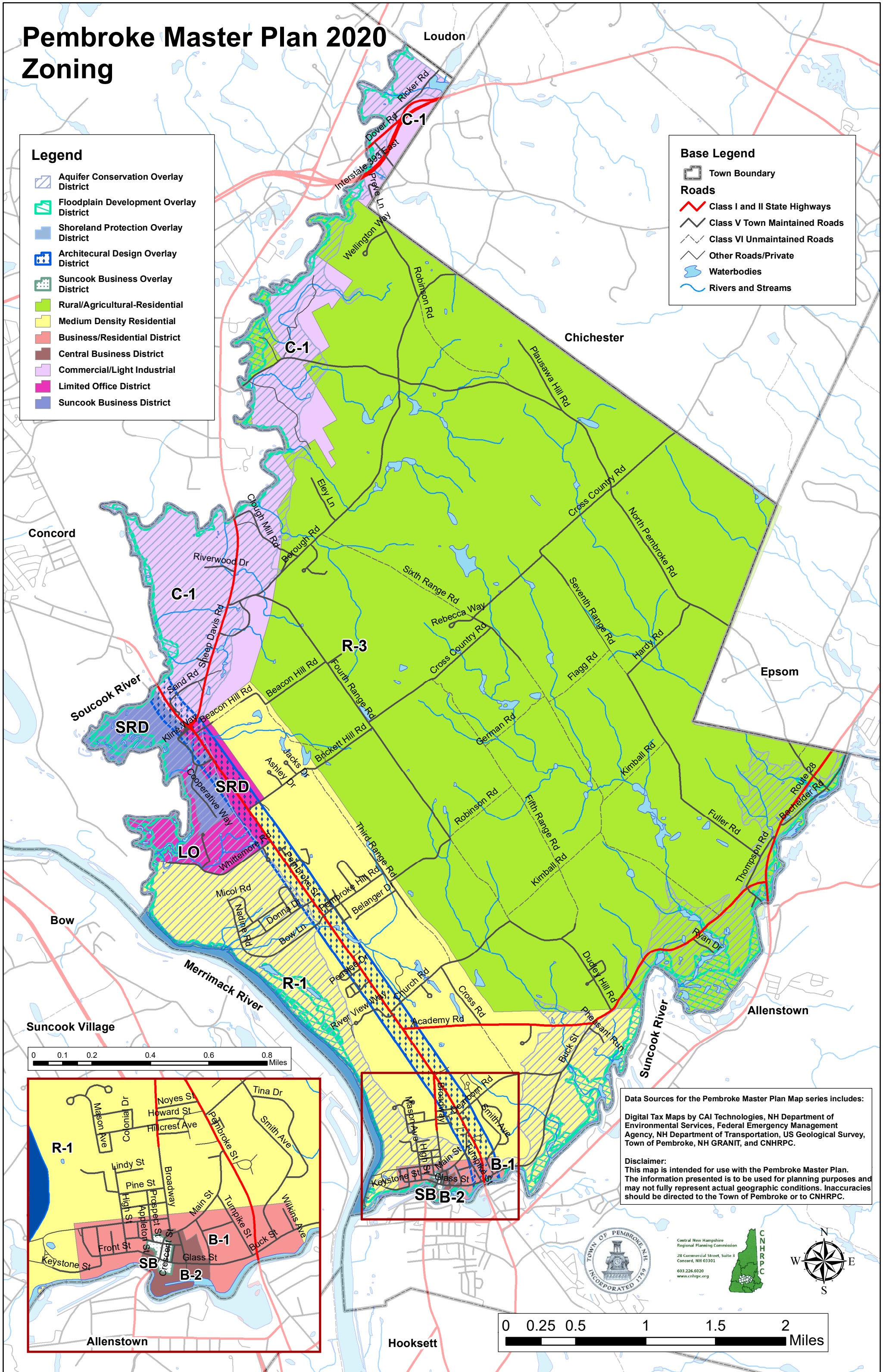
Zoning

Legend

-  Aquifer Conservation Overlay District
-  Floodplain Development Overlay District
-  Shoreland Protection Overlay District
-  Architectural Design Overlay District
-  Suncook Business Overlay District
-  Rural/Agricultural-Residential
-  Medium Density Residential
-  Business/Residential District
-  Central Business District
-  Commercial/Light Industrial
-  Limited Office District
-  Suncook Business District

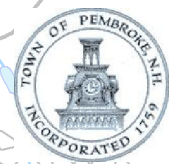
Base Legend

-  Town Boundary
- Roads**
-  Class I and II State Highways
-  Class V Town Maintained Roads
-  Class VI Unmaintained Roads
-  Other Roads/Private
-  Waterbodies
-  Rivers and Streams



Data Sources for the Pembroke Master Plan Map series includes:
 Digital Tax Maps by CAI Technologies, NH Department of Environmental Services, Federal Emergency Management Agency, NH Department of Transportation, US Geological Survey, Town of Pembroke, NH GRANIT, and CNHRPC.

Disclaimer:
 This map is intended for use with the Pembroke Master Plan. The information presented is to be used for planning purposes and may not fully represent actual geographic conditions. Inaccuracies should be directed to the Town of Pembroke or to CNHRPC.



Central New Hampshire Regional Planning Commission
 28 Commercial Street, Suite 3
 Concord, NH 03301
 603.226.6020
 www.cnhrpc.org

