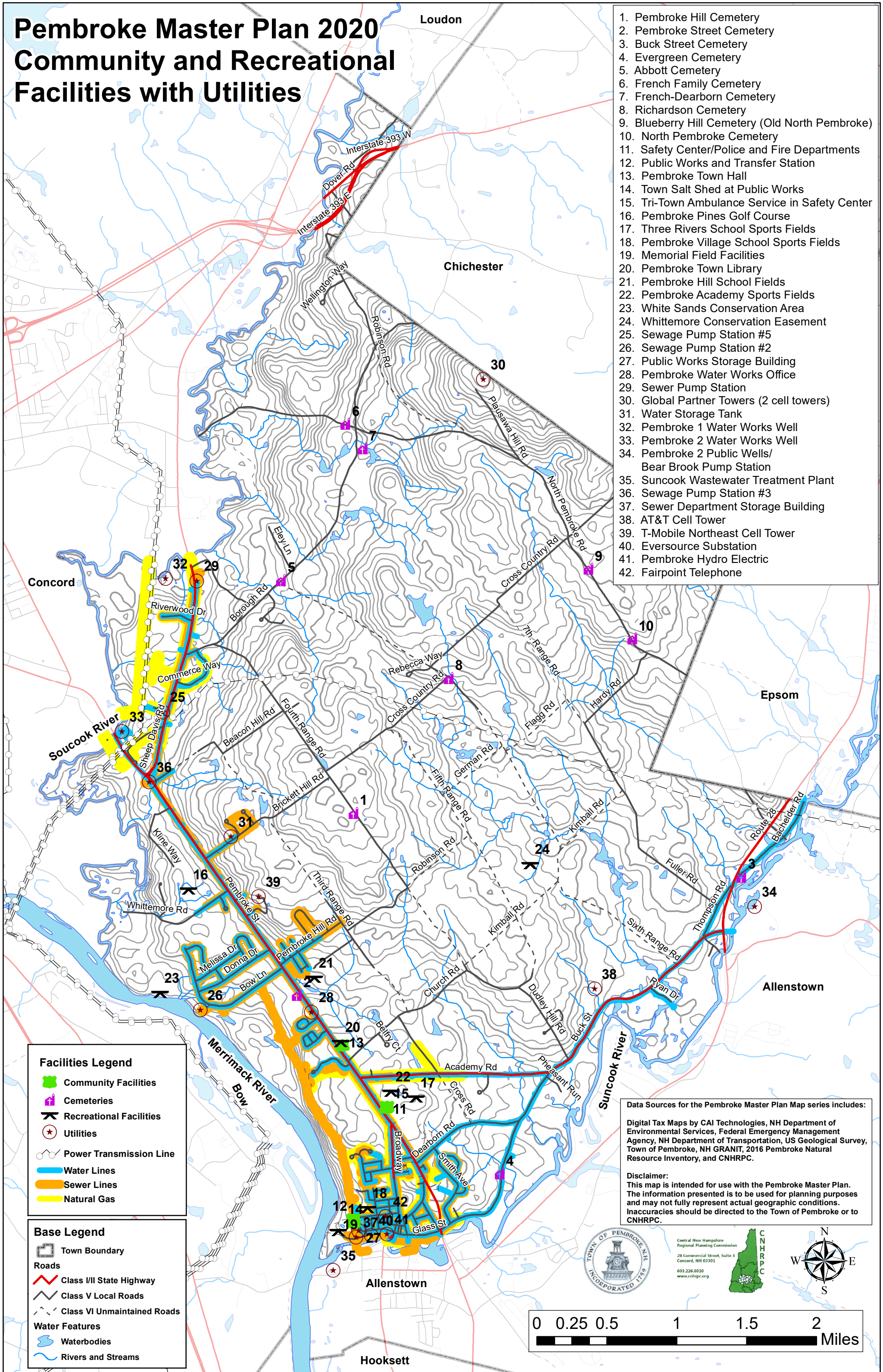


# Pembroke Master Plan 2020

## Community and Recreational Facilities with Utilities

1. Pembroke Hill Cemetery
2. Pembroke Street Cemetery
3. Buck Street Cemetery
4. Evergreen Cemetery
5. Abbott Cemetery
6. French Family Cemetery
7. French-Dearborn Cemetery
8. Richardson Cemetery
9. Blueberry Hill Cemetery (Old North Pembroke)
10. North Pembroke Cemetery
11. Safety Center/Police and Fire Departments
12. Public Works and Transfer Station
13. Pembroke Town Hall
14. Town Salt Shed at Public Works
15. Tri-Town Ambulance Service in Safety Center
16. Pembroke Pines Golf Course
17. Three Rivers School Sports Fields
18. Pembroke Village School Sports Fields
19. Memorial Field Facilities
20. Pembroke Town Library
21. Pembroke Hill School Fields
22. Pembroke Academy Sports Fields
23. White Sands Conservation Area
24. Whittemore Conservation Easement
25. Sewage Pump Station #5
26. Sewage Pump Station #2
27. Public Works Storage Building
28. Pembroke Water Works Office
29. Sewer Pump Station
30. Global Partner Towers (2 cell towers)
31. Water Storage Tank
32. Pembroke 1 Water Works Well
33. Pembroke 2 Water Works Well
34. Pembroke 2 Public Wells/  
Bear Brook Pump Station
35. Suncook Wastewater Treatment Plant
36. Sewage Pump Station #3
37. Sewer Department Storage Building
38. AT&T Cell Tower
39. T-Mobile Northeast Cell Tower
40. Eversource Substation
41. Pembroke Hydro Electric
42. Fairpoint Telephone



**Facilities Legend**

- Community Facilities
- Cemeteries
- ✈ Recreational Facilities
- ★ Utilities
- Power Transmission Line
- Water Lines
- Sewer Lines
- Natural Gas

**Base Legend**

**Town Boundary**

**Roads**

- Class I/II State Highway
- Class V Local Roads
- Class VI Unmaintained Roads

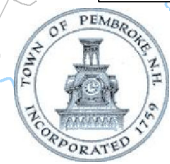
**Water Features**

- Waterbodies
- Rivers and Streams

Data Sources for the Pembroke Master Plan Map series includes:

Digital Tax Maps by CAI Technologies, NH Department of Environmental Services, Federal Emergency Management Agency, NH Department of Transportation, US Geological Survey, Town of Pembroke, NH GRANIT, 2016 Pembroke Natural Resource Inventory, and CNHRPC.

**Disclaimer:**  
This map is intended for use with the Pembroke Master Plan. The information presented is to be used for planning purposes and may not fully represent actual geographic conditions. Inaccuracies should be directed to the Town of Pembroke or to CNHRPC.



Central New Hampshire  
Regional Planning Commission  
28 Commercial Street, Suite 3  
Concord, NH 03301  
603.226.6020  
www.cnhrpc.org

