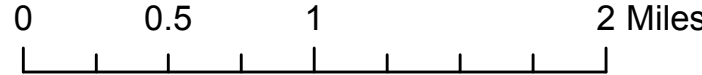


# Bradford Master Plan 2020 Land Use and Zoning

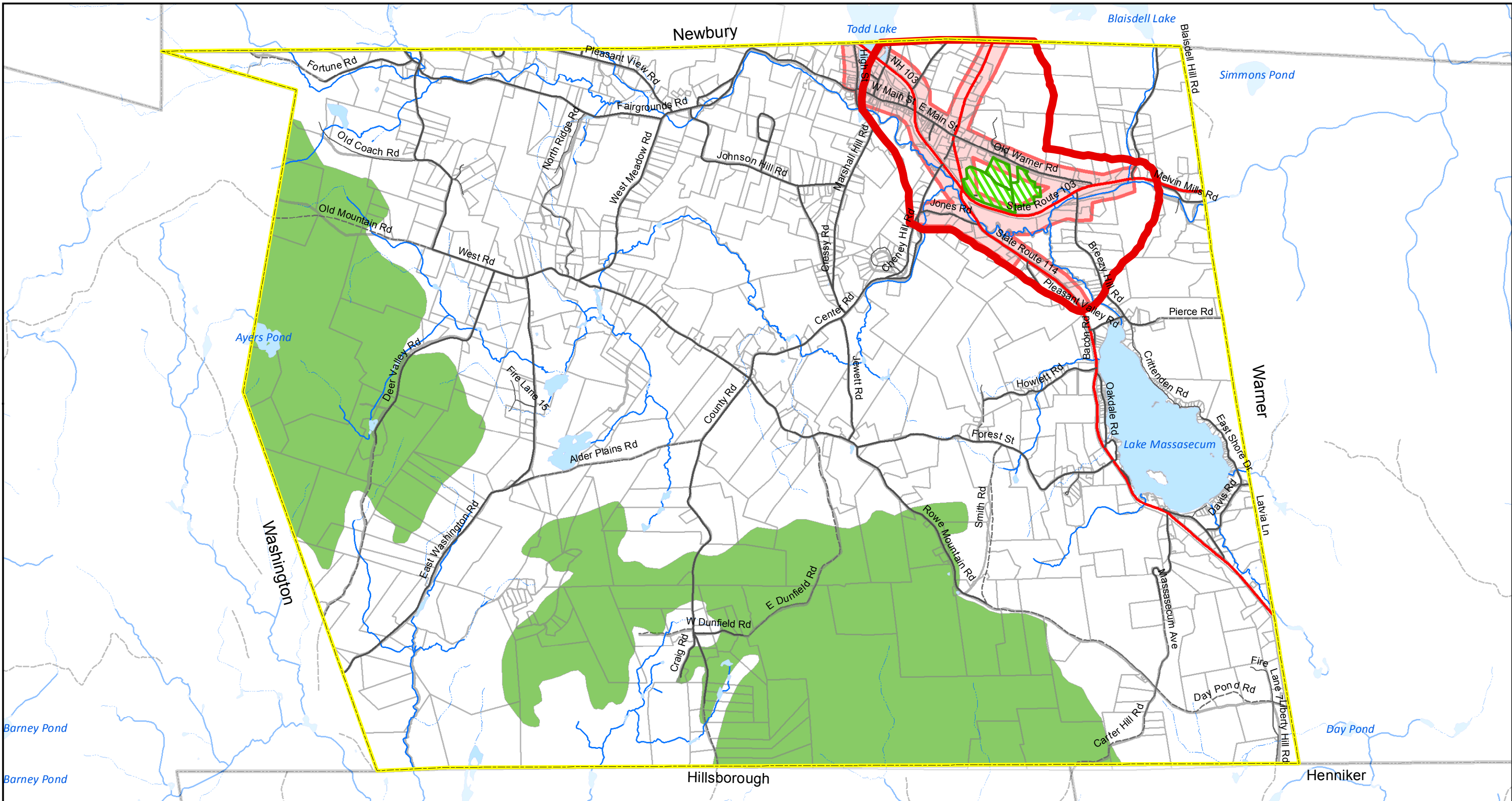
| Legend               |  |
|----------------------|--|
| <b>Zoning</b>        | <b>Land Use</b>                        |
| Residential/Business | Single Family/Duplex                   |
| Rural Residential    | Multi-Family                           |
| Conservation         | Mobile Home Park                       |
| Other Residential    | Developed Agriculture (Farmhouses Etc) |
| Commercial Retail    | Other Commercial                       |
| Institutional        | Industrial                             |
| Outdoor Recreation   | Excavation Areas                       |
| Cemeteries           | Water                                  |



Central New Hampshire  
Regional Planning Commission  
28 Commercial Street, Suite 3  
Concord, NH 03301  
603.226.6020  
www.cnhrpc.org



Sources: Land Use derived from 2015 Aerial  
Photography. All other data from NH GRANIT.

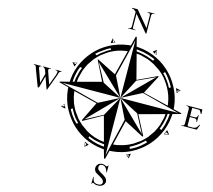
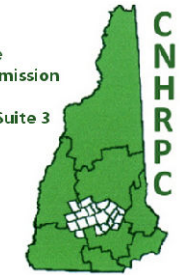


# Bradford Master Plan 2020 Conceptual Future Land Use

**Base Legend**

|                            |                      |
|----------------------------|----------------------|
| Residential/Business       | Lakes and Ponds      |
| Rural Residential          | Rivers and Streams   |
| Conservation               | Intermittent Streams |
| Extended Business District | Town Boundary        |
| Potential ERZ              |                      |

Central New Hampshire  
Regional Planning Commission  
28 Commercial Street, Suite 3  
Concord, NH 03301  
603.226.6020  
www.cnhrpc.org



Data Sources: Town of Bradford and Assessing Data 2011.  
All other data from NH GRANIT.