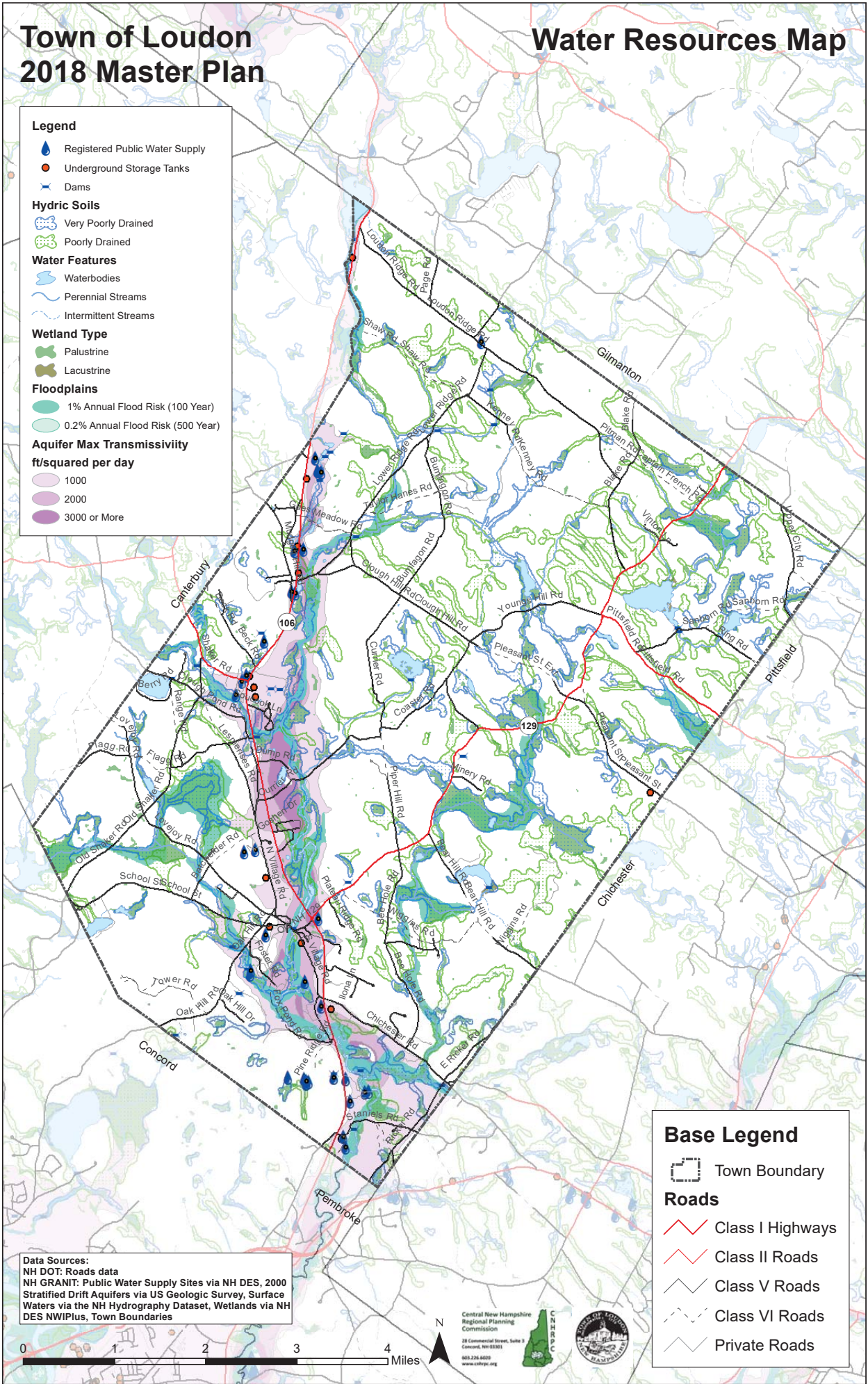


Town of Loudon 2018 Master Plan

Water Resources Map

Legend

- Registered Public Water Supply
- Underground Storage Tanks
- Dams
- Hydric Soils**
 - Very Poorly Drained
 - Poorly Drained
- Water Features**
 - Waterbodies
 - Perennial Streams
 - Intermittent Streams
- Wetland Type**
 - Palustrine
 - Lacustrine
- Floodplains**
 - 1% Annual Flood Risk (100 Year)
 - 0.2% Annual Flood Risk (500 Year)
- Aquifer Max Transmissivity
ft/squared per day**
 - 1000
 - 2000
 - 3000 or More



Data Sources:
 NH DOT: Roads data
 NH GRANIT: Public Water Supply Sites via NH DES, 2000
 Stratified Drift Aquifers via US Geologic Survey, Surface
 Waters via the NH Hydrography Dataset, Wetlands via NH
 DES NWIPlus, Town Boundaries



Central New Hampshire
 Regional Planning
 Commission
 28 Commercial Street, Suite 1
 Concord, NH 03301
 603.226.6000
 www.cnhrrpc.org

Base Legend

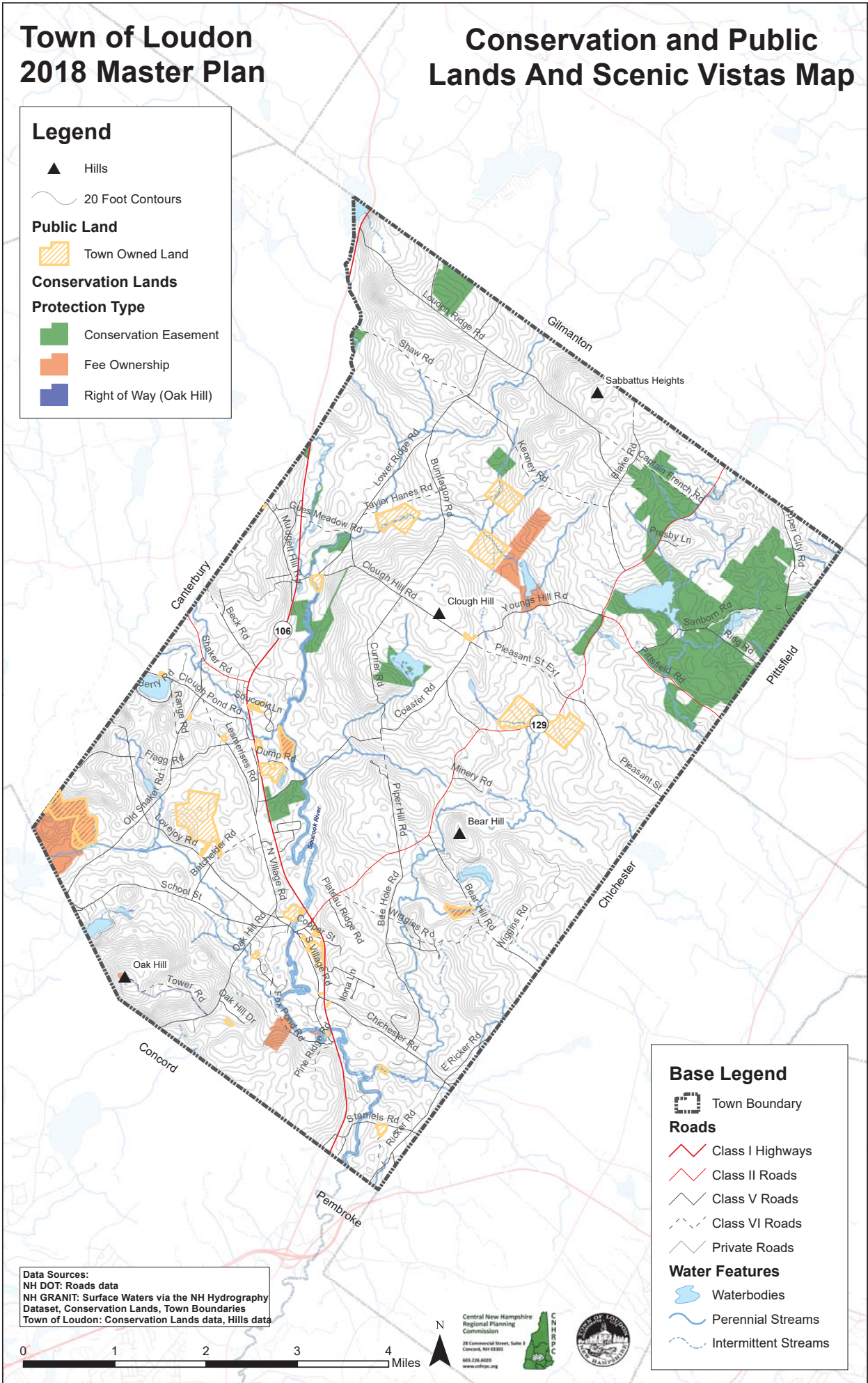
- Town Boundary
- Roads**
 - Class I Highways
 - Class II Roads
 - Class V Roads
 - Class VI Roads
 - Private Roads

Town of Loudon 2018 Master Plan

Conservation and Public Lands And Scenic Vistas Map

Legend

- ▲ Hills
- ~ 20 Foot Contours
- Public Land**
 - ▨ Town Owned Land
- Conservation Lands**
- Protection Type**
 - Conservation Easement
 - Fee Ownership
 - Right of Way (Oak Hill)



Base Legend

- ▭ Town Boundary
- Roads**
 - Class I Highways
 - Class II Roads
 - Class V Roads
 - Class VI Roads
 - Private Roads
- Water Features**
 - Waterbodies
 - Perennial Streams
 - Intermittent Streams

Data Sources:
 NH DOT: Roads data
 NH GRANIT: Surface Waters via the NH Hydrography Dataset, Conservation Lands, Town Boundaries
 Town of Loudon: Conservation Lands data, Hills data



Central New Hampshire
 Regional Planning
 Commission
 28 Commercial Street, Suite 3
 Concord, NH 03301
 603.226.6000
 www.cnhrpc.org





Town of Loudon 2018 Master Plan

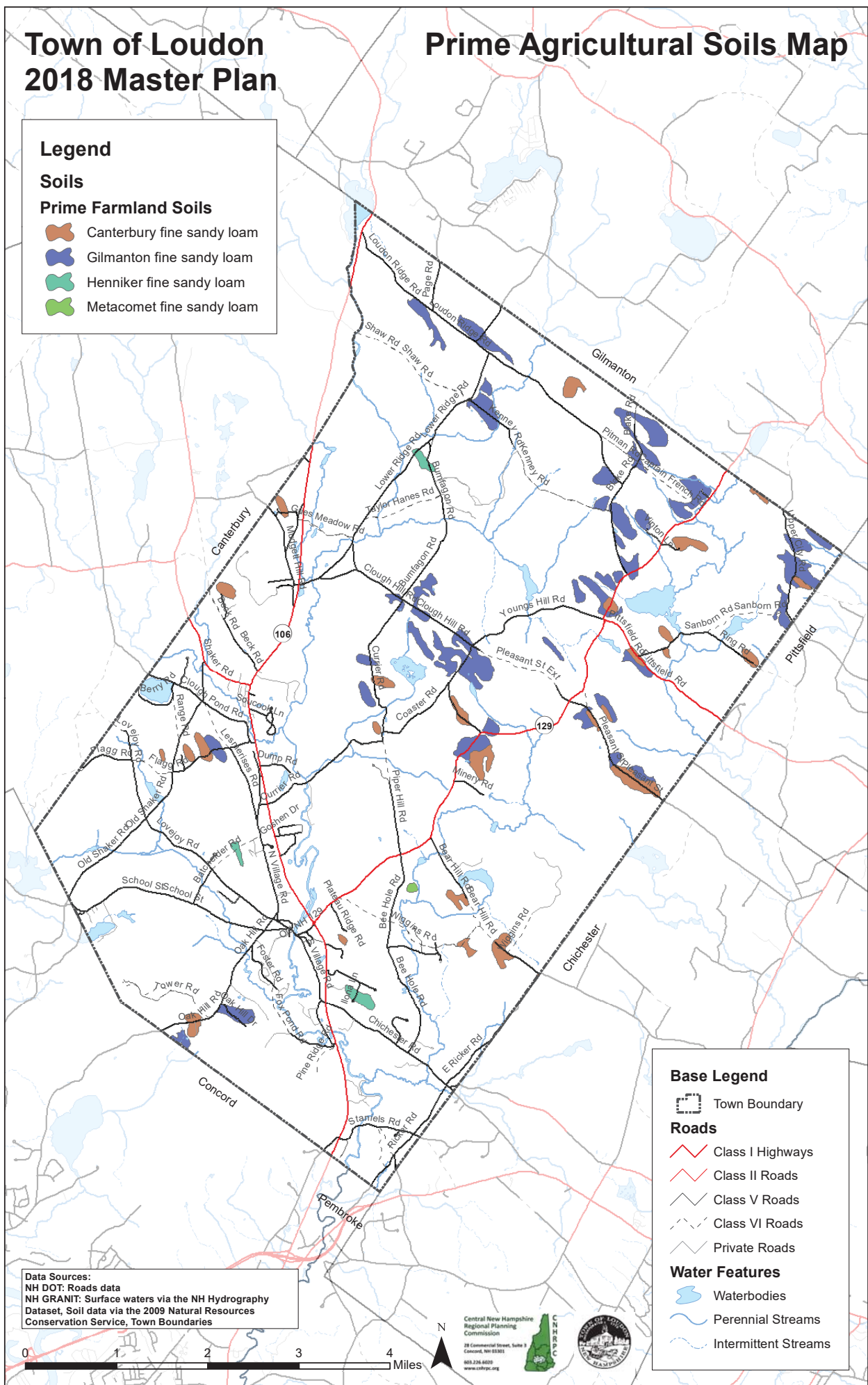
Prime Agricultural Soils Map

Legend


Soils

Prime Farmland Soils


-  Canterbury fine sandy loam
-  Gilmanton fine sandy loam
-  Henniker fine sandy loam
-  Metacomet fine sandy loam





Base Legend

 Town Boundary

Roads

 Class I Highways

 Class II Roads

 Class V Roads

 Class VI Roads

 Private Roads

Water Features

 Waterbodies

 Perennial Streams

 Intermittent Streams

Data Sources:
 NH DOT: Roads data
 NH GRANIT: Surface waters via the NH Hydrography Dataset, Soil data via the 2009 Natural Resources Conservation Service, Town Boundaries



Central New Hampshire
 Regional Planning
 Commission
 28 Commercial Street, Suite 3
 Concord, NH 03301
 603.226.6000
 www.cnhrpc.org








Town of Loudon 2018 Master Plan

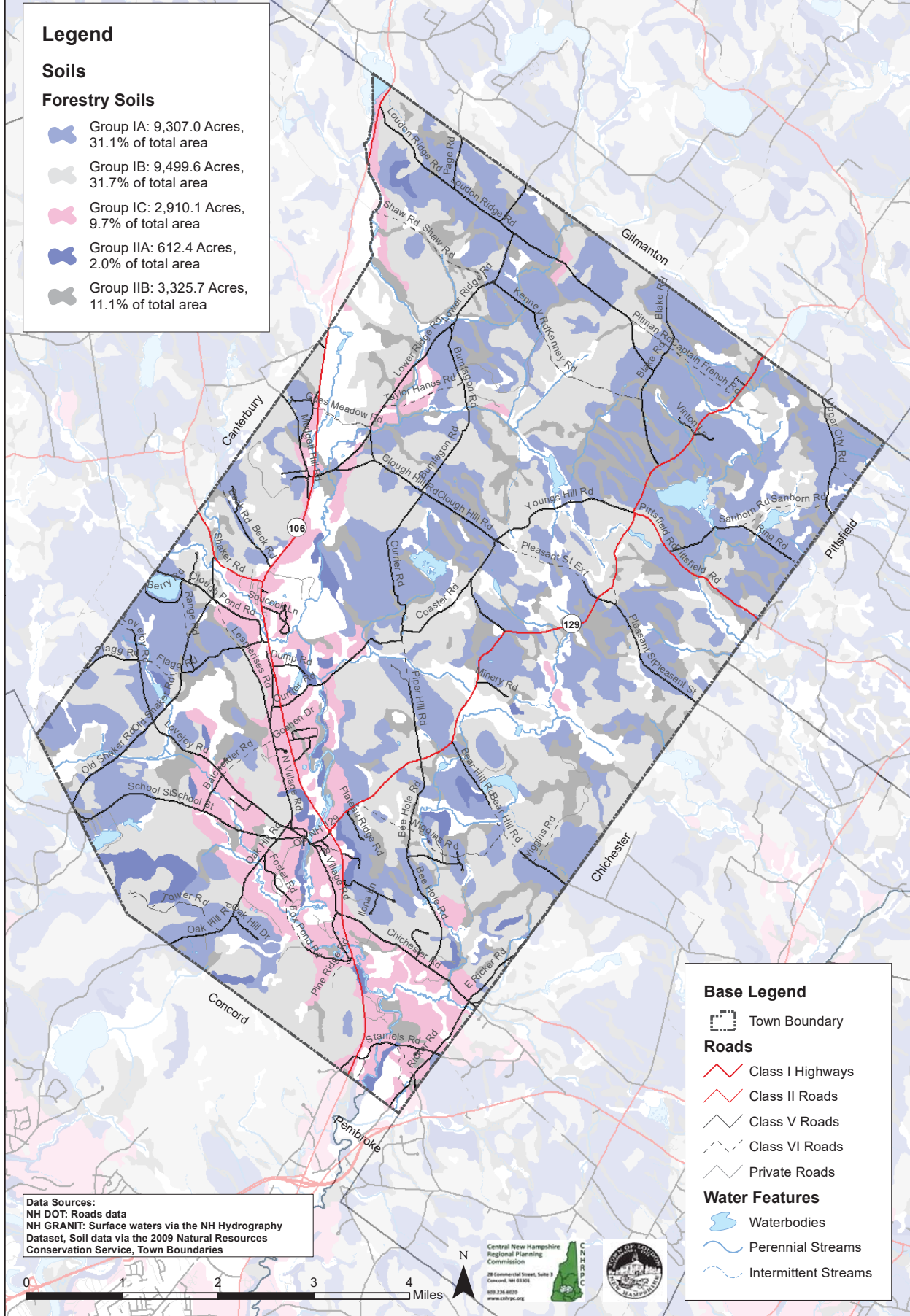
Forestry Soils Map

Legend










Soils

Forestry Soils

-  Group IA: 9,307.0 Acres, 31.1% of total area
-  Group IB: 9,499.6 Acres, 31.7% of total area
-  Group IC: 2,910.1 Acres, 9.7% of total area
-  Group IIA: 612.4 Acres, 2.0% of total area
-  Group IIB: 3,325.7 Acres, 11.1% of total area



Base Legend

-  Town Boundary
- Roads**
-  Class I Highways
-  Class II Roads
-  Class V Roads
-  Class VI Roads
-  Private Roads
- Water Features**
-  Waterbodies
-  Perennial Streams
-  Intermittent Streams

Data Sources:
 NH DOT: Roads data
 NH GRANIT: Surface waters via the NH Hydrography Dataset, Soil data via the 2009 Natural Resources Conservation Service, Town Boundaries






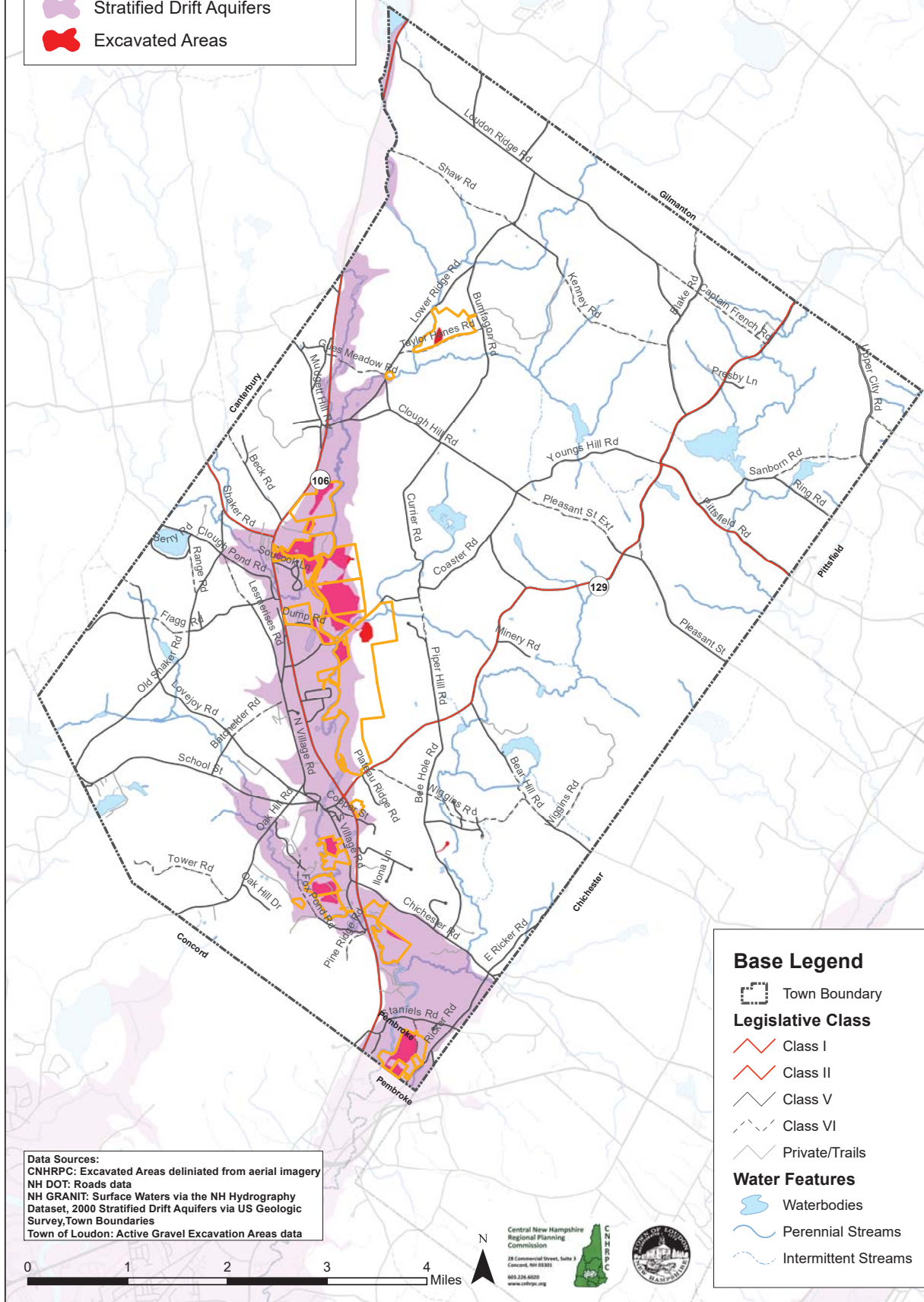
Central New Hampshire
 Regional Planning
 Commission
 28 Commercial Street, Suite 3
 Concord, NH 03301
 603.226.6000
 www.cnrpc.org

Town of Loudon 2018 Master Plan










Aquifer and Excavations Map

Legend

-  Active Gravel Excavation Areas
-  Stratified Drift Aquifers
-  Excavated Areas



Base Legend

-  Town Boundary
- Legislative Class**
-  Class I
-  Class II
-  Class V
-  Class VI
-  Private/Trails
- Water Features**
-  Waterbodies
-  Perennial Streams
-  Intermittent Streams

Data Sources:
 CNHRPC: Excavated Areas delineated from aerial imagery
 NH DOT: Roads data
 NH GRANIT: Surface Waters via the NH Hydrography Dataset, 2000 Stratified Drift Aquifers via US Geologic Survey, Town Boundaries
 Town of Loudon: Active Gravel Excavation Areas data



Central New Hampshire
 Regional Planning
 Commission
 28 Commercial Street, Suite 3
 Concord, NH 03301
 603.226.6000
 www.cnhrpc.org

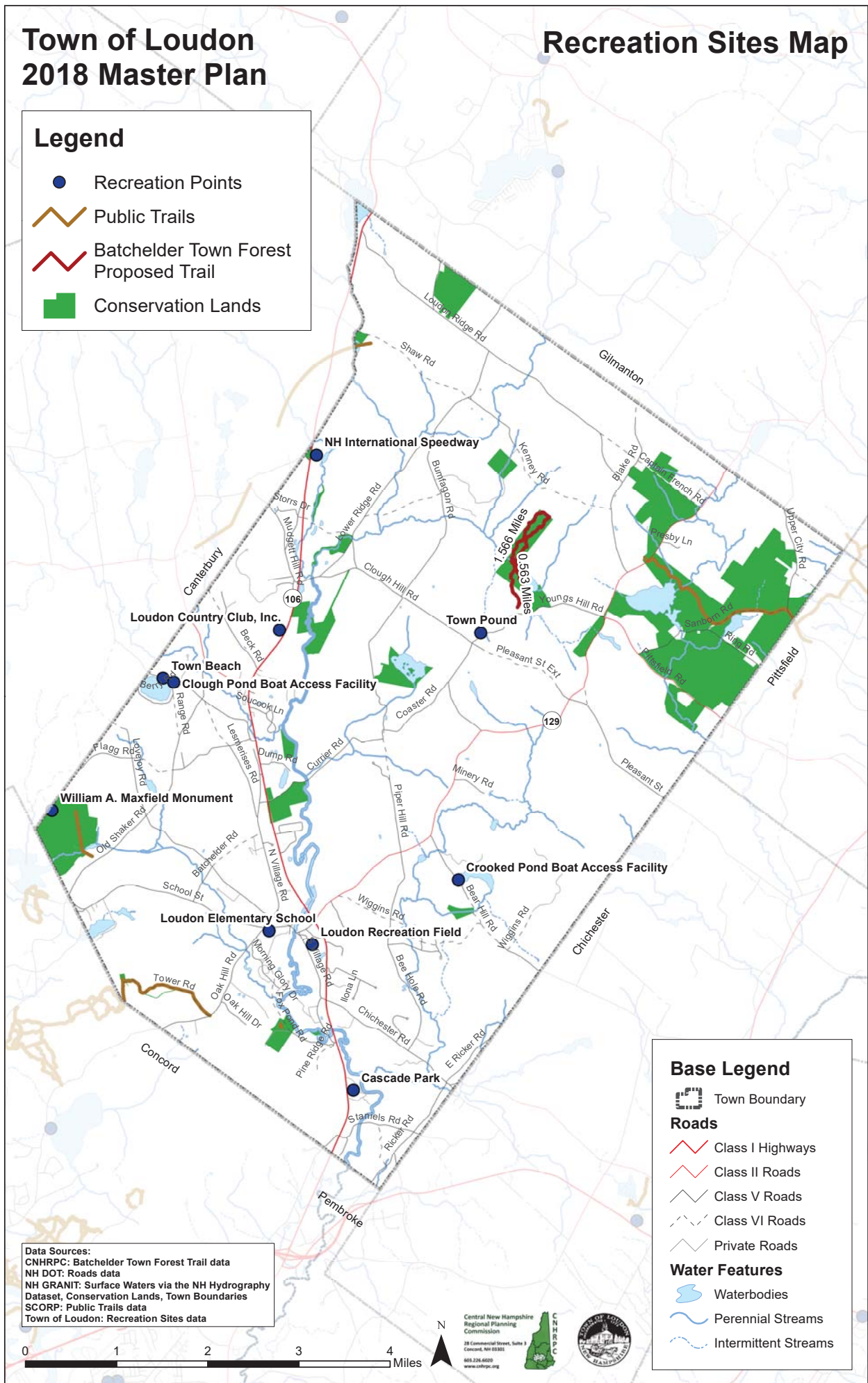


Town of Loudon 2018 Master Plan

Recreation Sites Map

Legend

- Recreation Points
- Public Trails
- Batchelder Town Forest Proposed Trail
- Conservation Lands



Base Legend

- Town Boundary
- Roads**
 - Class I Highways
 - Class II Roads
 - Class V Roads
 - Class VI Roads
 - Private Roads
- Water Features**
 - Waterbodies
 - Perennial Streams
 - Intermittent Streams

Data Sources:
 CNHRPC: Batchelder Town Forest Trail data
 NH DOT: Roads data
 NH GRANIT: Surface Waters via the NH Hydrography Dataset. Conservation Lands, Town Boundaries
 SCORP: Public Trails data
 Town of Loudon: Recreation Sites data



Central New Hampshire
 Regional Planning
 Commission
 28 Commercial Street, Suite 3
 Concord, NH 03301
 603.226.6000
 www.cnhrpc.org