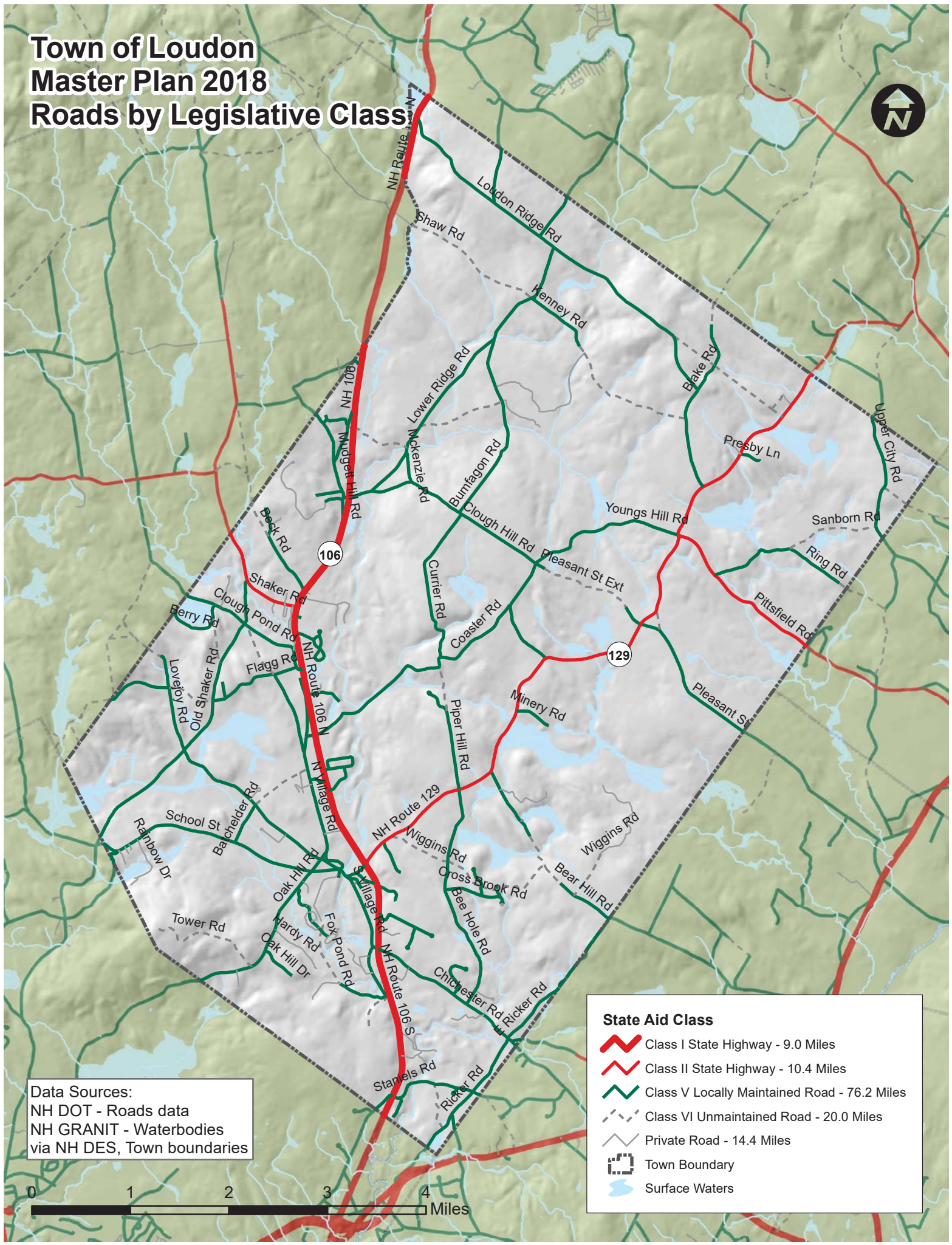
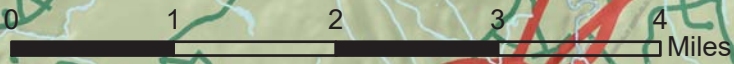


Town of Loudon Master Plan 2018 Roads by Legislative Class



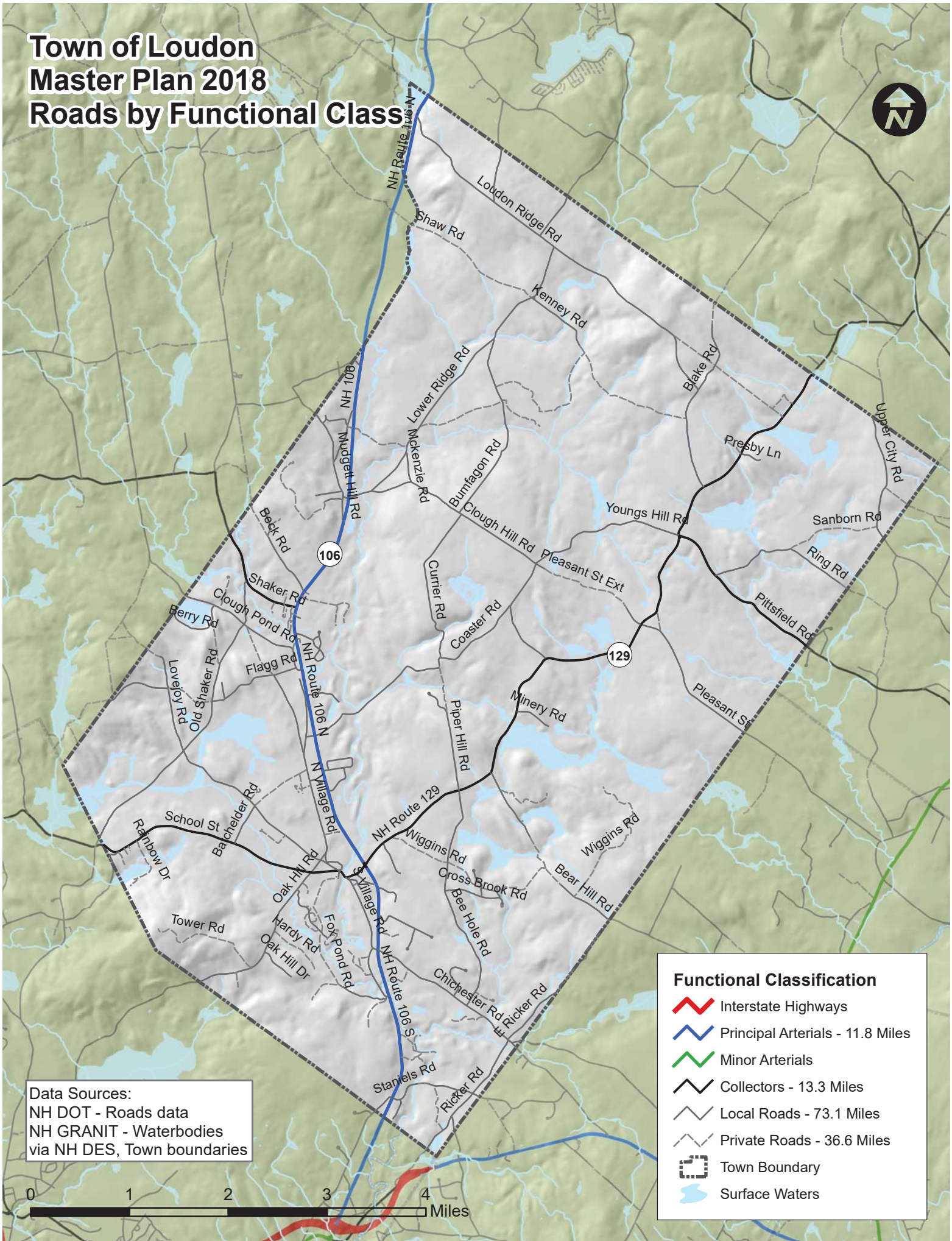
Data Sources:
NH DOT - Roads data
NH GRANIT - Waterbodies
via NH DES, Town boundaries



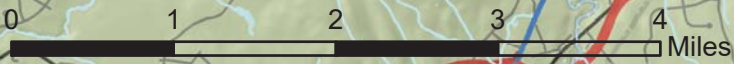
State Aid Class

- Class I State Highway - 9.0 Miles
- Class II State Highway - 10.4 Miles
- Class V Locally Maintained Road - 76.2 Miles
- Class VI Unmaintained Road - 20.0 Miles
- Private Road - 14.4 Miles
- Town Boundary
- Surface Waters

Town of Loudon Master Plan 2018 Roads by Functional Class



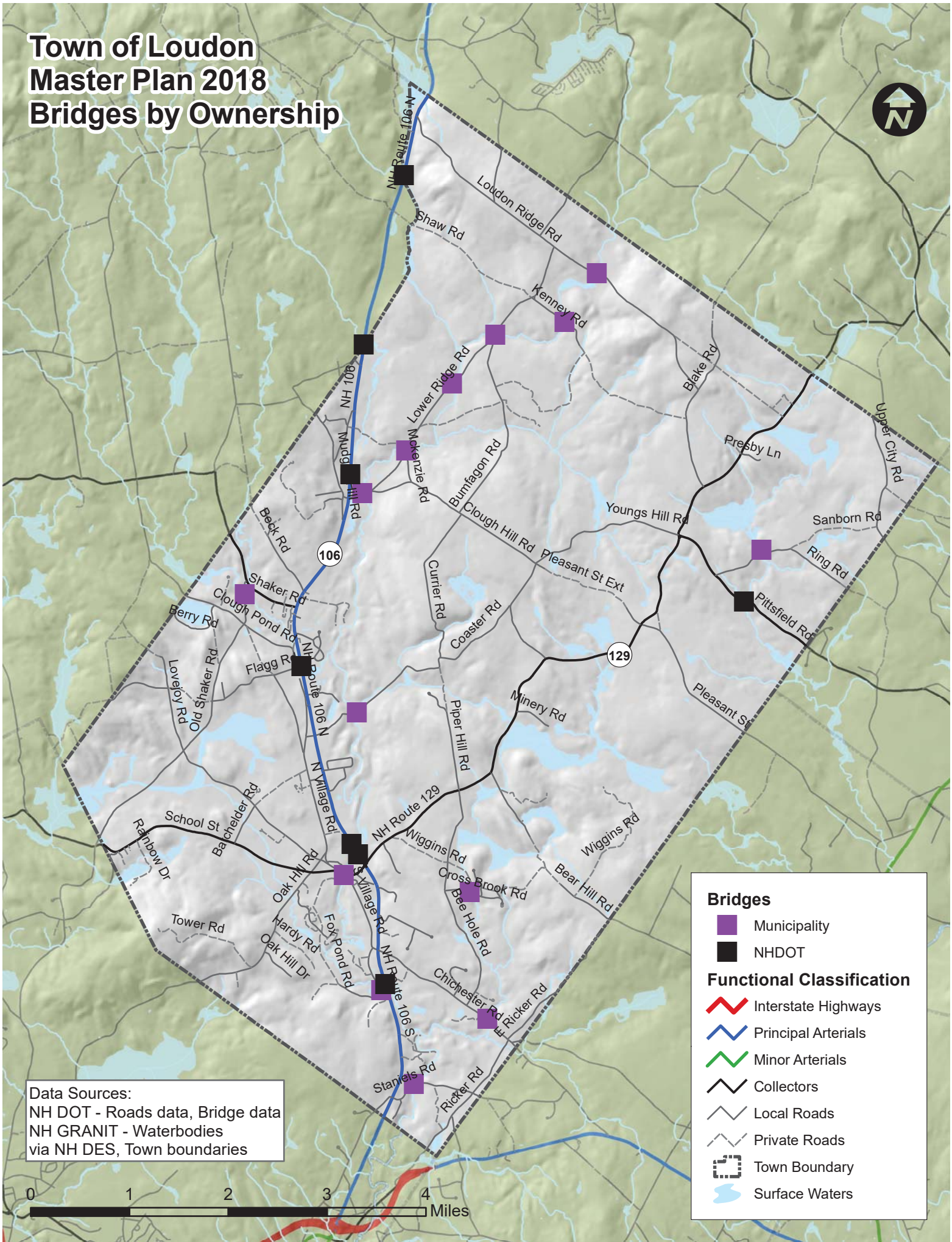
Data Sources:
NH DOT - Roads data
NH GRANIT - Waterbodies
via NH DES, Town boundaries



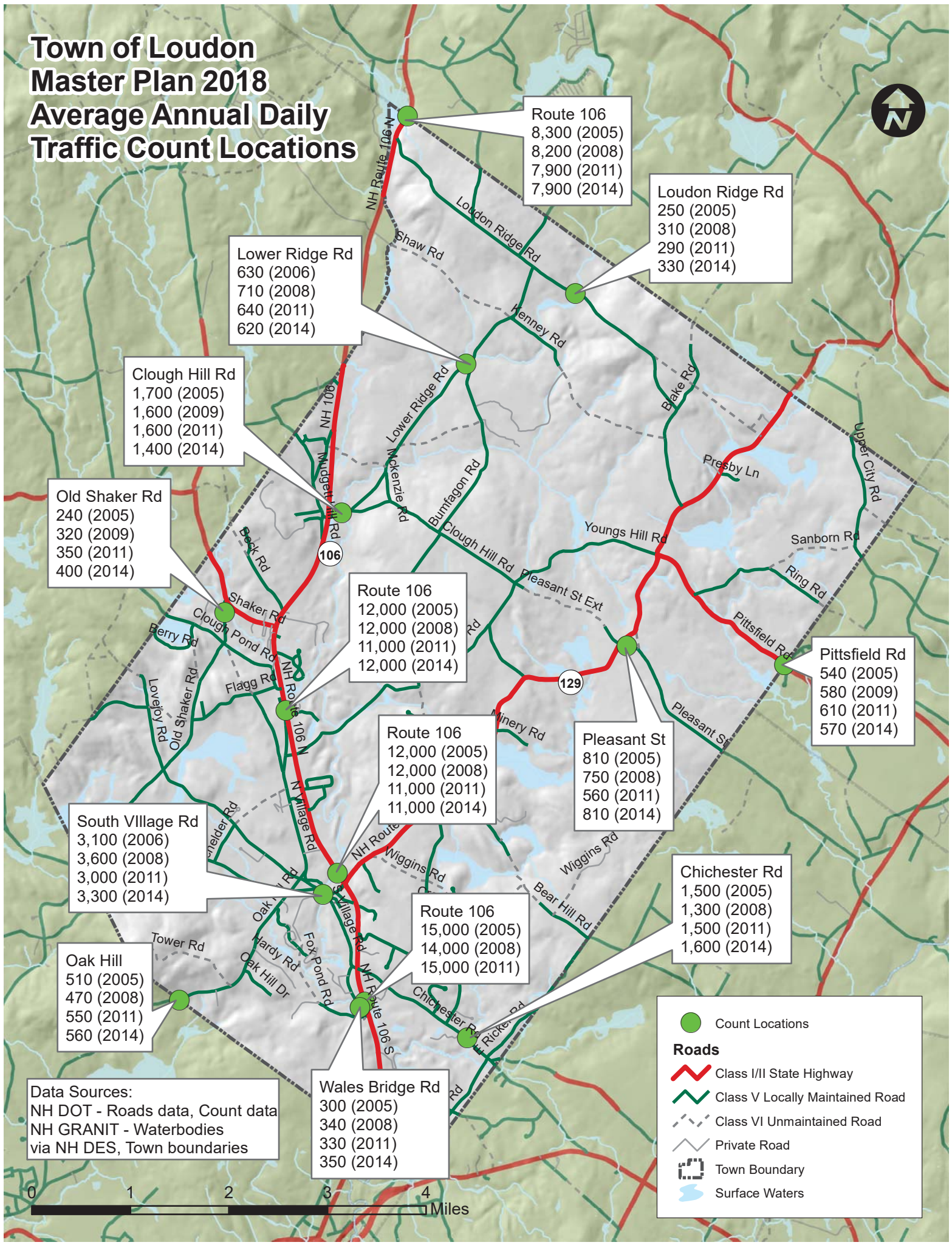
Functional Classification

- Interstate Highways
- Principal Arterials - 11.8 Miles
- Minor Arterials
- Collectors - 13.3 Miles
- Local Roads - 73.1 Miles
- Private Roads - 36.6 Miles
- Town Boundary
- Surface Waters

Town of Loudon Master Plan 2018 Bridges by Ownership



Town of Loudon Master Plan 2018 Average Annual Daily Traffic Count Locations



Route 106
8,300 (2005)
8,200 (2008)
7,900 (2011)
7,900 (2014)

Loudon Ridge Rd
250 (2005)
310 (2008)
290 (2011)
330 (2014)

Lower Ridge Rd
630 (2006)
710 (2008)
640 (2011)
620 (2014)

Clough Hill Rd
1,700 (2005)
1,600 (2009)
1,600 (2011)
1,400 (2014)

Old Shaker Rd
240 (2005)
320 (2009)
350 (2011)
400 (2014)

Route 106
12,000 (2005)
12,000 (2008)
11,000 (2011)
12,000 (2014)

Pittsfield Rd
540 (2005)
580 (2009)
610 (2011)
570 (2014)

Route 106
12,000 (2005)
12,000 (2008)
11,000 (2011)
11,000 (2014)

Pleasant St
810 (2005)
750 (2008)
560 (2011)
810 (2014)

South Village Rd
3,100 (2006)
3,600 (2008)
3,000 (2011)
3,300 (2014)

Chichester Rd
1,500 (2005)
1,300 (2008)
1,500 (2011)
1,600 (2014)

Oak Hill
510 (2005)
470 (2008)
550 (2011)
560 (2014)

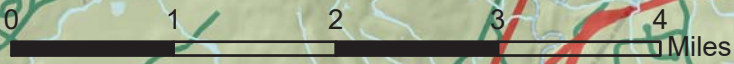
Route 106
15,000 (2005)
14,000 (2008)
15,000 (2011)

Wales Bridge Rd
300 (2005)
340 (2008)
330 (2011)
350 (2014)

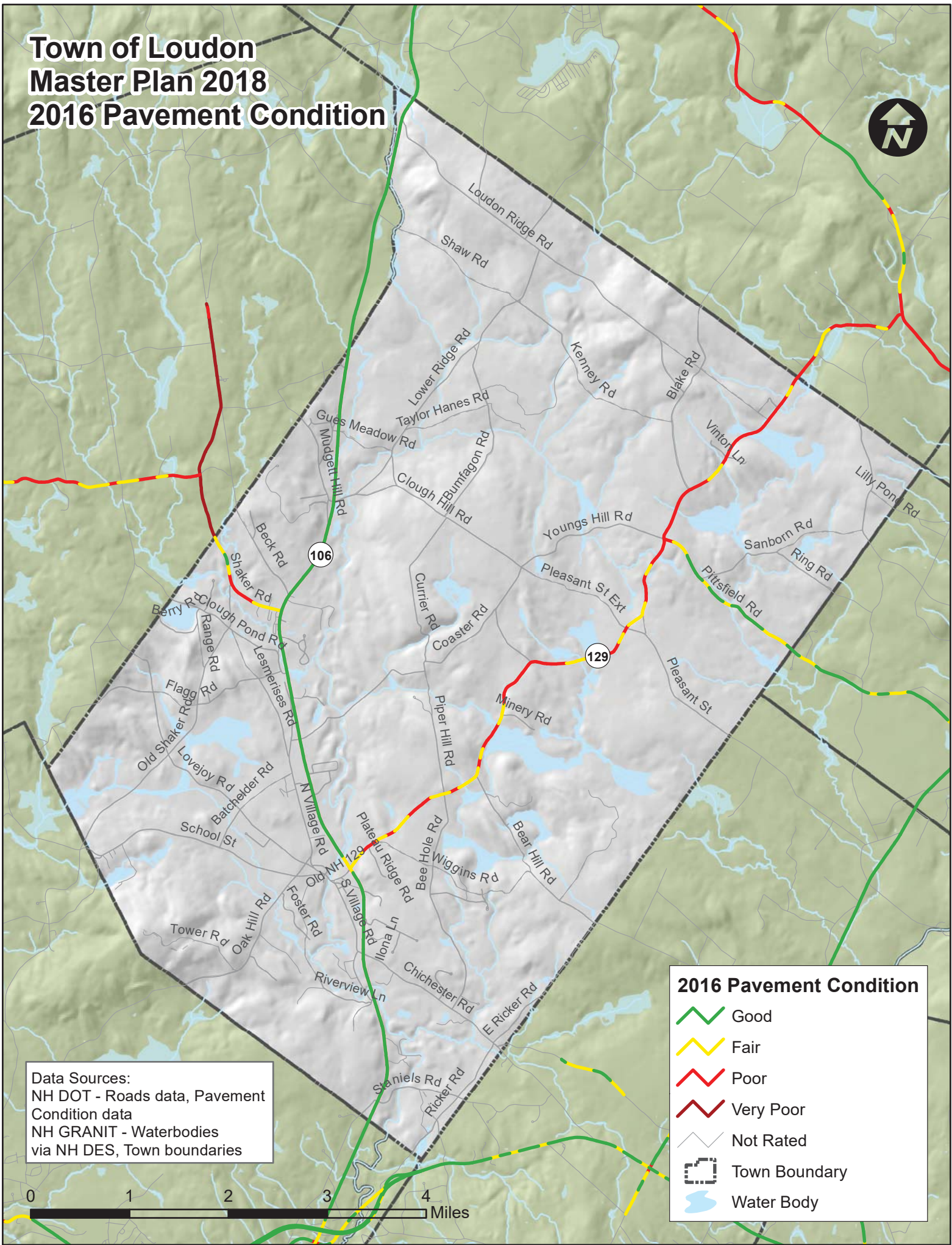
Data Sources:
NH DOT - Roads data, Count data
NH GRANIT - Waterbodies
via NH DES, Town boundaries

Count Locations
●

Roads
 Class I/II State Highway
 Class V Locally Maintained Road
 Class VI Unmaintained Road
 Private Road
 Town Boundary
 Surface Waters



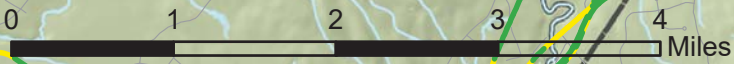
Town of Loudon Master Plan 2018 2016 Pavement Condition



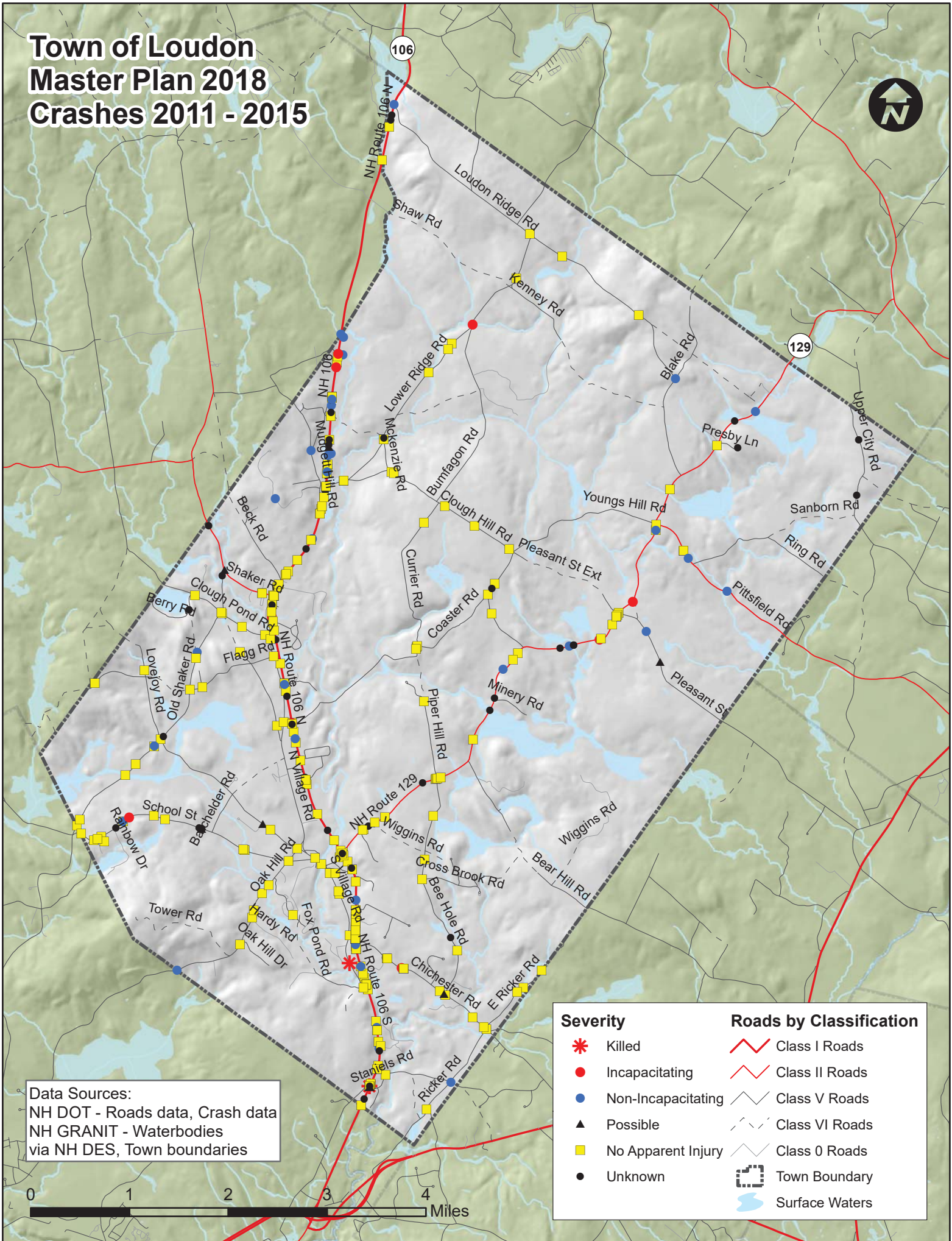
Data Sources:
NH DOT - Roads data, Pavement Condition data
NH GRANIT - Waterbodies via NH DES, Town boundaries

2016 Pavement Condition

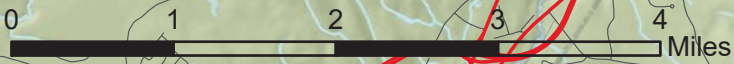
- Good
- Fair
- Poor
- Very Poor
- Not Rated
- Town Boundary
- Water Body



Town of Loudon Master Plan 2018 Crashes 2011 - 2015



Data Sources:
NH DOT - Roads data, Crash data
NH GRANIT - Waterbodies
via NH DES, Town boundaries



Severity		Roads by Classification	
	Killed		Class I Roads
	Incapacitating		Class II Roads
	Non-Incapacitating		Class V Roads
	Possible		Class VI Roads
	No Apparent Injury		Class 0 Roads
	Unknown		Town Boundary
			Surface Waters