



Central New Hampshire Regional Planning Commission

28 Commercial Street, Suite 3
Concord, NH 03301
(603) 226-6020
www.cnhrpc.org

CNHRPC NEWS & UPDATES

Upcoming Events

CNHRPC Executive Committee Meeting

Thursday, June 14, 2018 at 6:15 PM
CNHRPC Conference Room
28 Commercial Street, Concord NH

CNHRPC Full Commission Meeting

Thursday, June 14, 2018 at 7:00 PM
Horseshoe Pond Community Resource Room
26 Commercial Street, Concord NH



Commuter Challenge Results

Way to go Central New Hampshire! Together we logged 1,049 miles and 76 trips by walking, biking, carpooling, and telecommuting! Thank you to all who participated! For more information, visit commutesmartnh.org.

COMMUTER CHALLENGE

May 14-18, 2018

TOTAL MILES LOGGED

TOTAL TRIPS LOGGED



1,049



76

Mid-State RCC Transportation Needs Assessment

The Mid-State Regional Coordinating Council, as part of the Coordinated Transit and Human Services Transportation Plan update, is seeking the public's input regarding access to transportation across the region. The Mid-State RCC region consists of Belknap County, Merrimack County (excluding Hooksett) and the towns of Hillsborough, Deering and Windsor from Hillsborough County. This plan update will help to ensure that evolving transit and human service needs are continually met by the appropriate federal transit funding.

Take the survey here: <https://www.surveymonkey.com/r/MidStateRCC>

Central NH Bicycle and Pedestrian Counts

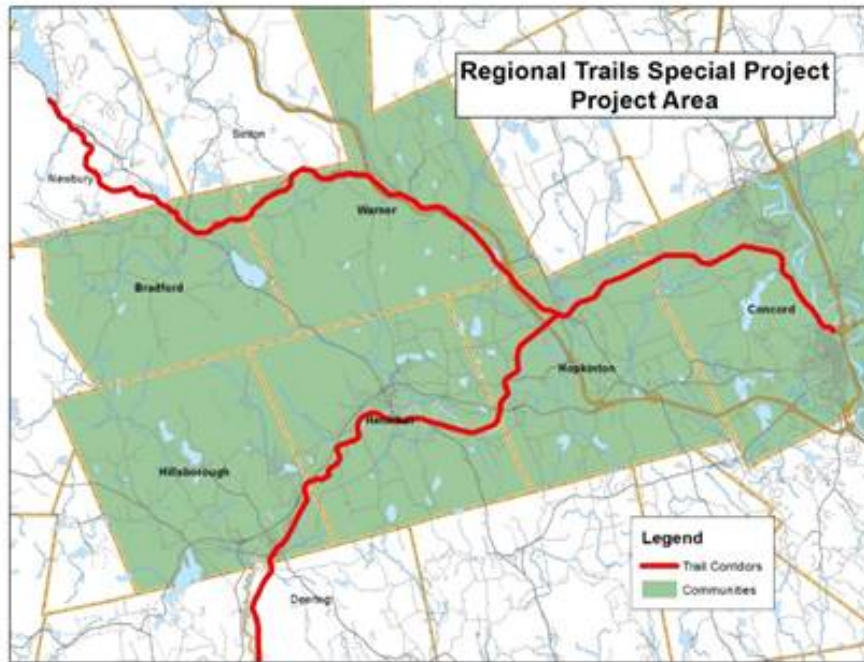
Each May and September CNHRPC coordinates volunteers to conduct bicycle and pedestrian counts at strategic intersection locations in the CNHRPC region. This May, seven locations were counted, adding to a database of hundreds of counts since 2013.

Additional counts are planned for school zones before summer break begins. In addition to tracking the number of bicycles and pedestrians that traverse an intersection, additional data on helmet use, sidewalk riding, gender split, and children under 16 are also collected. Over time, this data helps to paint a picture typical of bicycle and pedestrian activity across a neighborhood, village, or downtown area.

In addition to the manual counts, automated counting equipment is available upon request if the site and data needs are a good match. This equipment is particularly suited for counts on non-motorized rail trails and shared use paths. For more information please contact Craig Tufts at ctufts@cnhrpc.org.

West Central Trails Special Project

The CNHRPC is wrapping up a draft of the West Central Trails Plan for presentation at the June 14 CNHRPC Full Commission Meeting. This plan describes the vision and documents efforts to construct a proposed Concord to Lake Sunapee Rail Trail across the CNHRPC communities of Concord, Hopkinton, Warner, and Bradford and highlights existing trail sections and potential future trail projects. It also documents early discussions on a possible rail trail from Hopkinton, Henniker, and Hillsborough connecting to the existing Hillsborough Recreational Trail in Deering. For more information contact Craig Tufts at ctufts@cnhrpc.org or join us at the June 14 Full Commission Meeting.



CNHRPC | 28 Commercial St Ste. 3, Concord, NH 03301 | (603) 226-6020 | www.cnhrpc.org

